

WesTurn News

Issue 190

12th July 2016

Western Sydney Woodturners Inc
Twin Gums Retreat, Corner Northcott Road and Diane Drive
PO Box 4008, Lalor Park NSW 2147
Web Site: www.westernsydneywoodturners.com



President's Report

Hello again, I'm being pushed by my esteemed editor again for my Report, seems to come around very quickly.

Dave Matthews and I had a nice day at St Nicholas at Plumpton; Steve Attard could not come at the last minute as he was not well. We had a good show of people, lovely hospitality and food on the day.

We are still working on the waterproofing of the shed and maybe we have won this time, hopefully. Work continues around the club but new items turn up faster than we can fix the old ones.

Keep in mind the A.G.M at the end of the month so let's see as many members as possible for this meeting.

We have a very busy couple of months ahead with various demonstrations including the Stitches and Craft in Canberra and Newcastle.

By the time this Report comes out we will have visited Mt Druitt Hospital to present the new equipment to the Children's Ward. Thank you to everyone who participated in helping towards this annual project.

Christmas in July at Northmead Bowling Club is on again on Sunday 31st so if you haven't put your name down yet please do, you don't have to have a partner bring a friend and have a good time.

By now everyone who comes to the club would have seen the new bandsaw. We also have a bobbin sander and another large vacuum cleaner to add to our equipment.

That's all from now, hope I'm in time for the edition.

Happy Turning

BOB YOUNG

Club Committee

President: Bob Young (0408760131)

Vice Presidents: Paul de Belle and David Searle

Secretary: Alan Eipper

Treasurer: Paul Collins

Grants Officer & Membership Secretary: Raymond Saich

Catering Officer: Fiona Deane

Librarian: Gary Hansell

Editor: Ron Fathers

ron1947@optusnet.com.au

Assistant Editor: James (Jimmy) Singh

jimmy-woodturner@hotmail.com

Webmaster: Lindsay McEwen

lcmcewen@optusnet.com.au

Training Co-ordinator: Ron Devine

Trainers: Graham Dawes, Rod Brown and Alan Phelps

Shop Managers:

Paul Collins (JP) and Bob Young

Stores, Equipment & Maintenance:

Manny Farrugia, Dave Matthews,

Graham Dawes (JP)

Welfare Officer: Steve Attard

s.attard84@gmail.com

If you have any problems or information concerning the club please contact any of the above committee members.

Club Badges

Any Member who hasn't received their name tag yet or if you just need a new one, please let me know and I will make you one as soon as I can.

Jimmy Singh

Shop items

Triple "P"

Friction Polish

Sanding Sealer

Sandpaper

Club Shirts

Dust jackets

Club Badges

Pen Kits

Pen Blanks – Acrylics

Many more items also available

Shop Trading Hours

Mon-Thurs: 9am – 10:30am

12:45 – 1:30pm

Friday nights: 7pm – 7:30pm

See Paul Collins or Bob Young for more details



Thanks to Michelle Rowland MP, The member for Greenway, for her continued support which includes the printing of this newsletter

Club Trading Hours

Mon-Thurs: 8:30am – 4pm \$5

Friday Nights: 5pm – 9pm \$3

Third Saturday of the month:

9am – 3pm \$5

16th July

20th August

17th September

Contact: Liam Healy – 0411560984

Ladies Day – Second Saturday of the month:

13th August

10th September

Contact: Anna Dawes – 96386995

tandawes@optusnet.com.au

Maxi Day – Third Sunday of the month:

From 9:30am (Lunch included) \$6

17th July – Catherine Gorrie

Square Dishes with legs/ Airbrushing

21st August

18th September

Club Meetings

Second Tuesday of the month – 7pm

12th July

9th August

13th September

Pens Wanted for the Troops

Can members please make and donate any pens for the troops. Please give them to the convenor on your day.

Thankyou so much! Editors

New Members

Welcome to all our new members this month. We hope your stay is both long and rewarding

Paul Foulds

Happy Birthday

Happy Birthday to all our members this month. We hope you have a great day with many more to come.

Carlo Arrigoni	Rob Buckwell
Ian Frith	Tony Hartmann
Michael Jones	Denis Keane
John Kostrzewa	Dave Matthews
David Mitchell	David Thurairatnam

Welfare Report

To the members who have been ill last month, we wish you a speedy recovery and hope you're back turning ASAP also the members who have lost loved ones may they rest in peace and many sympathies to you and your family. If anyone in the club is unwell or has had a family passing please advise myself via email s.attard84@gmail.com until next time happy turning and stay safe.

Steve Attard

COMING EVENTS

Bunning BBQ's

Seven Hills – 8am to 3:30pm (Setup 7am)

- Saturday 23rd July
- Monday 3rd October

Rivergum Cottage Markets

49 Withers Road Rouse Hill – 10am to 2pm (Setup 9am)

- Saturday 27th August

Stitches and Craft Shows (10am to 4:30pm)

Exhibition Park – Canberra

- Thursday August 11th to Sunday 14th August
Newcastle Entertainment Centre Broadmeadow
- Thursday August 18th to Sunday 21st August

Bidwill Blokes Breakfast

Chifley College – 8:30am to 11am

- Wednesday 31st August

St Joseph's College

Mark Street Hunters Hill – Setup 10am

- Sunday 13th November

- **Any members interested in going to these events please put your name on the clipboards at the club**

- **MEMBERS – WE REALLY NEED MORE CHARITY BOWLS! So PLEASE make as many as you can 😊**

Christmas In July



**Christmas
in July**

Sunday 31st July (Lunch)

Northmead Bowling Club

166 Windsor Rd, Northmead



B S FROM THE BUSH



This month has again flown by; we have the Grand kids with us again. It only seems like last week we had them.

Of course they are always up to something

Just after the last news letter, the Lions Club had the catering to do for a competition where cars drive over rocks. It was pretty spectacular and I suggest you google W E ROCK 4wd (World Extreme 4wd). Three of us had caravans so we arrived Friday mid day, set up then cooked until Sunday lunch. It didn't turn out like it should have as the number of spectators were down on expectations , the weather was very cold. The weekend was very exciting as we had time to view the action.



After setting up, started serving until dark. Fire box to keep warm and nice sunset



The action amongst the rocks, not always staying on four wheels.



Time to relax but close to the action. Taking a trip across a paddock meant some cleaning afterwards.

More visitors from Sydney. Ron and Janelle, they chose a cold time to come but good to see them



Had plenty of rain recently, river crossing flooded, first time we have seen it flooded.



Its getting closer, signage almost up



The box Ron made
Ken Vodden

Maxi Day Bandsaw Boxes - Andy Tappouras

The Maxi Day in June was held by one of our members, Andy Tappouras. Andy has demonstrated here before, the last time showing his skills in lead lighting. He's a talented man and generous with his time and today gave us all a lesson in making bandsaw boxes. I had no idea how they were made, so, for me, it was very interesting.



Andy started by showing us the different machines he needed to use, that being the bandsaw, linisher and bobbin sander. He highlighted the importance of using a sharp blade on a bandsaw and that more accidents happen with blunt tools than sharp tools. He likes to use a 6mm blade which enables him to cut fairly tight curves. He points out too, that bandsaw boxes are not something you can make in a hurry, that you need to glue and clamp then wait for that to dry before moving on to the next piece.



Design with these boxes is limitless. He asked the members present to try their skills at design and make a sketch on paper of a box they would like to create.

On a block of wood he draws his design, cuts the back off, on the bandsaw, then cuts around the outside shape.

Next the inside is cut and removed as this will become the draw. Before moving on to the draw he sands the inside, trims the back, glues and clamps it and puts it aside. Remember, when sanding less is best as you don't want an ill fitting draw. The front and back of the draw are then cut off and now the waste can be removed from the draw.



After sanding the inside on the bobbin sander and the outside of the draw on the linisher he then glued the front and back. Remember when sanding to regularly clean the paper to prevent burning. All edges are then rounded over by a router or sanded down to take the sharp edges off.



Andy prefers to finish off with Estapol, either satin or gloss, it's a quality product and leaves a good finish.

It was about then that Manny called 'lunch is served' and I didn't need to be told twice, I was hungry. Fiona excelled again, this time with a slow cooked roast beef, it was so tender.



As this was their last catering job before their extended holiday, let me thank both Fiona and Manny for the many hours they have spent cooking and preparing meals for the members at various functions. It is appreciated and we hope you have a great time away enjoying yourselves.

Alan Phelps was again asked to host Show and Tell which he does so well. Always full of encouragement for the few who brought things in to display for members.

After lunch Andy collected the papers which held the drawings of potential bandsaw boxes. One or two were a bit 'out there' but most had some merit.

The roll up was pretty good, above average and everyone I spoke to said it was a good day and were pleased with Andy's demonstration. So Andy, from me and the other members that came to watch and learn a big thank you.

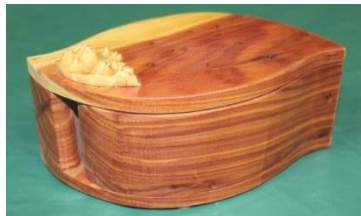
Ron Fathers

Show and Tell

Andy Tappouras



Jacarandra



Chinese Pine



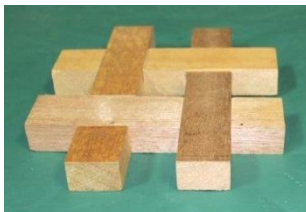
Cherry



London Plane

Estapol

Les Pritchard



Ron Fathers



Huon Pine
Stylewood

Jimmy Singh



Oak & Sapele
Friction Polish



Camphor
Friction Polish



Huon Pine
Friction Polish



Camphor
Friction Polish



Corian & Walnut
Friction Polish



The Spoon



I have no doubt that each of you has had a long and ongoing relationship with a spoon including some or all of the following where you:

Were spoon fed as a child.
Have spoon fed friends and others with many a tale.
Were smacked with a spoon.
Smacked your own children with a spoon.
Had your tongue depressed you tongue with a spoon.
Tossed your food on the floor with a spoon.
Played with spoons and probably made a lot of noise.
Were given medicine on a spoon.
Have stirred many substances with a spoon.
Have measured various powders and liquids using different sized spoons
Have slept in spoons with your partner.

But did you ever give a thought to how the spoon came about and how it has evolved over many years? I suspect not.

Since the dawn of human civilization, various eating utensils were created to help us prepare, serve and eat various types of food. From the simple sharpened rocks, carved wood sticks, clay dishes, and invention of metallurgy, the spoon managed to prove itself as the most perfect tool in all areas of food preparation and serving. Its simple design consisting of small shallow bowl (shaped oval or round) that is connected to a handle has been used over millennia by many ancient civilizations, finally reaching the modern state and design that we all know today. Spoons dominate our modern way of preparing and serving food. Many variations of spoons are used for many specific tasks in eating, preparing and other activities, and many more types were used in the past.

The history of the spoon is long and interesting. Nobody knows when a spoon was first used, but archaeological findings place some of the ornamental and religious spoons in the area of 1000 years BC. These ancient spoons made from wood, flint, slate and ivory were in possessed by Egyptian priests and Pharaohs, and were made in very exotic and strange designs, often describing important religious events on their hilts and bowls with the use of hieroglyphs and elaborate drawings. By the time the age of Ancient Greece and the Roman Empire, spoons were produced from bronze and silver and were more commonplace among wealthy class of people.

By the time of Medieval Europe, spoons made from cow horns, wood, brass and pewter were often used as a means of easy transport of eating ingredients for both people and animals. Wooden spoons started being replaced with more durable metal variants only in 15th century, of course only in higher circles of people. The earliest mentioning of spoons in England comes from 1259, as a part of wardrobe accounts of King Edward I. In those medieval times, spoons were used not only as a means of eating but as a mark of wealth and power. Coronation of every king of England was followed by the ritual of anointing by the special spoon. During the Renaissance, Baroque and Victorian times, the spoon received many design changes, finally receiving its current modern look by the end of 18th century.

In **modern times**, spoons have many uses in our food industry. Not only does it serve as a perfect tool for consuming liquid or semi-liquid foods (soups, stews, ice creams, etc.), but it is very useful as a tool to measure, mix, stir and toss ingredients that are very small or in powdery or solid form. Standardization of modern kitchenware and eating utensils created the term "**spoonful**", which describes the amount of material that can be placed in one spoon container.

In addition to the many variations on the "standard dining spoon" there are other spoons designed for specific purposes. These include:

As an eating utensil:

Caviar spoon - because of fact that silver changes the taste of caviar, these spoons are most often created from mother of pearl, gold, animal horn and wood.

Coffee spoon - smaller than a teaspoon.

Dessert spoon - created in a medium size, somewhere between teaspoon and dining spoon.

Fruit spoon – which features sharpened point or teeth, for easier carving of various fruits (orange, grapefruit etc.).

Iced tea spoon - has a very long handle.

Many **other** designs, such as Demitasse spoon, Chinese spoon, Bouillon spoon, Parfait spoon, Rattail spoon, Runcible spoon, Salt spoon, Seal-top spoon, and more.

As a cooking or serving utensils:

Ice cream scoop spoon

Bar spoon (very similar to teaspoon)

Caddy spoon

Slotted spoon

Mote spoon

Mustard spoon

Cheese scoop spoon

And many others...

As other objects:

Coronation or anointing spoon - used by various royal families in their ceremonies, most notably by English crown.

Cochlear - religious spoon of Eastern Orthodox Church, used to serve consecrated wine.

Newborn spoon - made from silver and given to newborn children as an object of good fortune.

Ear spoon

Drug spoon

And many others...

Then of course there are Spoonerisms but that maybe a tale for another day.

Quote of the month:

Life is not the way it's supposed to be. It's the way it is. The way you cope with it is what makes the difference. –

Author unknown

Must Fly Woodchip

New equipment and facilities for members

Over the coming months we intend to hi-light some of our new equipment purchased or acquired by the club and to make members aware of how the club is developing.

As part of the clubs constant renewal of equipment, we have recently received and installed a Vicmarc VL150 lathe. This is the first of our small lathes with electronic speed control. This lathe is very good for small work and has a locking collar that allows the lathe to turn backwards without the risk of the chuck unscrewing. We also have two new chuck accessories, being a set of 25mm Pin jaws and set of 144mm Dovetail Jaws which will suit Vicmarc chucks and our third party chucks. Both the VL 150 lathe and the accessory jaws were part a grant from the Men's Shed association to provide new facilities to the club.

Raymond Saich



The Older Songs



I've always loved the older songs
 Their melodies are clear
 But sometimes clever lyrics can be sad
 And just the same we sing along
 If only we just hum
 To remind us of the happy times we had



Musicians from that era
 The Forties and round then
 Have stayed as great, up to this very day
 Glen Miller now is just as good
 And so is Artie Shaw
 Duke Ellington: I love to hear him play



The Crooners were a part of this
 Like Bing and Nat and Frank
 Aretha when she sings makes spirits rise
 And poor dear Billie Holiday
 She really sang the blues
 We hope her life was also filled with highs



The music of that time was not so loud
 The bands of then could soothe you
 And we all used them for romance
 They were sweeter times and softer
 They were full of fun and laughter
 It was to this that we all loved to dance



Neil Guthrie

Some Quotes by Steven Wright

All those who believe in psycho kinesis raise my hand.

The early bird gets the worm, but the second mouse gets the cheese.

I almost had a psychic girlfriend but she left me before we met.

OK, so what's the speed of dark?

How do you tell when you're out of invisible ink?

If everything seems to be going well, you have obviously overlooked something.

Support bacteria - they're the only culture some people have.

Safety Matters

A Reminder about Workshop Safety

We must all keep in mind the importance of WORKSHOP SAFETY. Please THINK and ACT responsibly at all times.

It is up to all of us to fulfill our commitment by wearing at all times;

- ✓ Dust masks
- ✓ Protective glasses
- ✓ Suitable clothing
- ✓ Footwear
- ✓ Ear protection

It does not hurt to discuss safety with other members if they are not doing the right thing.

REMEMBER..... **It is your body and your limbs.....**



TREND TIMBERS

SPECIALIST IN FINE WOODS

Established 1969 A third generation timber family



YOUR 1 STOP WOODWORKING SHOP IN NSW

Over 100 species
Select timbers for
Cabinetmaking
Furniture
Joinery
Woodturning
Carving

TREND TIMBERS
15 Railway Road North,
Mulgrave NSW 2756
TELEPHONE: 02 4577 5277
FAX: 02 4577 6846
Email: sales@trendtimbers.com.au
www.trendtimbers.com.au

Opening Hours
ALL WELCOME!!
Mon- Fri 8am-4pm
Sat 8am-11.30am
Closed
Public Holidays &
Long Weekends

BAND SAWS

THE PERFECT CUT

EVERY TIME



BP-360
\$820 (W955)

BP-310
\$649 (W952)

BP-255
\$449 (W950)

If you're in the market for a new band saw for your workshop or garage, you owe it to yourself to visit your nearest Hare & Forbes Machineryhouse showroom – we have just introduced 3 new Hafco Woodmaster band saws to our already extensive range. Our newest models require only 240V power supply and available in a 255mm, 0.5hp model; a 310mm, 1hp model; and a 360mm, 1.5hp model. All 3 models include a generous cast iron work table that can tilt up to 45° to minimise flex while cutting heavier timbers, and are professionally finished with sleek curved blade guides.

The sturdy fabricated steel saw frame and stand provides plenty of rigidity throughout the machine. Fitted with a LED light on a flexible arm, ball bearing blade guides, safety magnetic switch and emergency stop for addition user protection, rear dust collector port and slide out dust drawer. 2 blade speeds make these band saws perfect for a wide range of timbers and the large aluminium fence with

quick action lock provides the perfect support to cut straight every time. There is also an optional circle cutting attachment that fits directly onto the adjustable top blade guide for further versatility.

Whatever project you're working on, a Woodmaster band saw is an essential machine for every wood worker. Prices start from \$495.

For more information, visit www.machineryhouse.com.au

PROMOCODE: **WTNSAW**

Use the unique code to receive these great offers instore or online!
Offer ends 31-08-16

HARE & FORBES 100% Australian Owned Est. 1930
MACHINERYHOUSE
"Setting the standard for quality and value"
www.machineryhouse.com.au

Sydney	(02) 9890 9111	1/2 Windsor Rd, Northmead
Brisbane	(07) 3274 4222	625 Boundary Rd, Coopers Plains
Melbourne	(03) 9212 4422	1 Fowler Rd, Dandenong
Perth	(08) 9373 9999	11 Valentine St, Kewdale

Specifications & Prices are subject to change without notification. All prices include GST and valid until 31-07-16

06_WTN_July_010716

THE BACK PAGE

ITEM 29

Wood Finishing - Series 3

In this series I describe how to finish a difficult dry open grained timber with just lacquer.

There are a lot of Lacquers available and this can be very confusing.

According to the experts the latest and the greatest is Acrylic Lacquer which was developed for the auto industry.

The one that I am using is a clear Acrylic Topcoat available from "Super Cheap Auto" a chain of shops around Sydney. This comes in 1L cans and is crystal clear, plus you need the appropriate thinners. You need to thin it out around 50/50.

The materials you need are:

Acrylic Lacquer

Triple P polishing wax

We are assuming you have a finely sanded bowl on the lathe

First step

Applying the lacquer

As before get a small piece of rag multiple layers about 50mm sq. Don't use a large piece of rag the lacquer will just get lost in it. Now apply the lacquer to the wood either directly or on the rag. Rub the lacquer into the pores of the wood whilst turning the bowl by hand until you feel that the wood is full. This will take multiple coats. Turn the lathe on its slowest speed, hold the wet part of the rag gently against the bowl and smooth out the surface. Keep this up until the lacquer appears to harden and dry. I suggest you let the job dry for half an hour or so or if you are really keen overnight. This drying time is going to be up to you. The harder the surface the better the shine.

Now hand sand the surface back with 400g or 600g until smooth. Don't run the lathe this only clogs up the paper. You can finish this off with fine steel wool if you wish and you can turn the lathe on for this to give a final polish.

Final Step

Run the lathe at a medium speed and use Triple P as a cutting compound or polish. This should bring the surface up to a high gloss finish. At this stage if you wish you can leave the job overnight to allow the lacquer to fully harden then another cut and polish. The harder the surface is the better it polishes.

If you feel that the surface is too glossy cut it back with OOOO steel wool to what you want.

Well I hope this is of interest to you. Happy turning

Alan Phelps

Note: As in all professions there are many and varied opinions and ways of doing things. This is true of wood turning. These articles are the results of my reading article publications.