

# WESTERN NEWS

Issue: 157

8th July 2013

## Western Sydney Wood-turners Inc

Twin Gums Retreat, Corner Northcott Road and Diane Drive, Lalor Park

PO Box 4008, Lalor Park, NSW 2147

Web Site: [www.westernsydneywoodturners.com](http://www.westernsydneywoodturners.com)

Guild Web Site: [sydneywoodturners.com.au](http://sydneywoodturners.com.au)

## PRESIDENT'S REPORT,

Another year has gone, it goes so quickly. Our renewals have reached 78% which is an excellent figure.

Many repairs and improvements have been done around the Club including the purchasing of new equipment. The Clubhouse is fully painted now and we are currently awaiting our new sign for the front of the building. The slabbing machine is continuing to supply plenty of timber for our members.

Our shed for the trailer and wood storage is on track for starting and we are just waiting for Blacktown Council's consideration.

The A.G.M. Will be held on 21st July 2013. An important question will be asked of ALL Members present. I hope everyone can be aware of both sides of the debate and can make an informed decision. So please all turn up for the A.G.M to speak and vote. May I remind members that they should attend the meeting if they wish to vote, as proxies can **not** be accepted.

I have had a long year but we have seen many things started and completed. So I would like to take this opportunity to thank my Executive, our Committee and all helpers/volunteers for everything they have done. As without them we would not move forward.

Hope to see as many as possible attend the Annual General Meeting.

BOB YOUNG

**Thanks** to Michelle Rowland MP, Member for Greenway for her continued support which includes the printing of this newsletter.



## NEW MEMBERS

Welcome to all our new members  
Who have recently joined.

We hope your stay is both long and  
rewarding.

**JOHN MILES**

**&**

**CHANTELLE HAZELL**

## Western Sydney Wood-turners Programme 2013

### Workshops:

<b>Monday</b>	8.30am—3.00pm	\$5
<b>Tuesday</b>	from 8.30am,	\$5
<b>Wednesday</b>	from 8.30am	\$5
<b>Thursday</b>	from 8.30am,	\$5
<b>Friday Night</b>	from 7.00pm.	\$3
<b>Third Saturday</b>	9:30—3:30	\$5

**Next Club Meeting: 13th Aug 2013  
10th Sep 2013**

The club meeting is held on the **second Tuesday** of the month starting at 7.00pm at Twin Gums. All members are welcome .

### **AGM— 21st JULY 2013 - SUNDAY**

**(Will be held after our Maxi Day)**

All positions will be declared vacant, Start thinking about what role you might be able to fill.....

**NOTE: WE NEED A NEW EDITOR !!!!!**

**Maxi-days:** are held on the **Third Sunday** every month from 9.30am

Light Lunch is provided. Cost \$ 6.00

### **.... MAXIDAY 21st July.....**

Anna Dawes will be demonstrating  
**"Evolving Bowls"**

I am told this is where one starts with a square blank, turns half the bowl round and leaves the other half square.....sounds intriguing.

### **..... MAXIDAY 18th Aug .....**

Liam & Wendy Healy will host

### **An Open Day Workshop**

Bring some Turning  
or  
Scroll Saw—Have a Go :)

## **:) HAPPY BIRTHDAY :)**

Wishing each of the following members a very Happy Birthday, with many, many more to follow.

### **JULY 2013**

ROB BUCKWELL      MAX CARTER

RICHARD DE GROOT

DAVID DILLON      RACHEL GRAHAM

ASHLEY GRANT

GARRY KINGI      GABY KLJUCEVIC

JOHN KOSTRZEWA

FRANK MALYSIAK

DAVE MATTHEWS

DAVID MITCHELL

DON NIXON

JENNIFER REYNOLDS

TOBY SUTHERLAND

\*\*\*\*\*

### **ITEMS FOR SALE**

CLUB SHIRTS

BADGES

PEPPER GRINDERS

SALT GRINDERS

SAND PAPER

PEN KITS

PEN CASES

PEN PARTS

LETTER OPENERS

FRICITION POLISH

TRIPLE "P"

POLISH CLOTHS

TIMBER SEALER

PERFUME APPLICATOR

QUILTING IDEAS PAPER  
CRAFT IDEAS BEADING  
IDEAS KNITTING IDEAS  
FUN IDEAS LEARNING  
IDEAS GREAT IDEAS  
THOUGHTFUL IDEAS  
INSPIRING IDEAS



Est. 1987

NEWCASTLE

AUGUST 15 – 18, 2013

NEWCASTLE ENTERTAINMENT CENTRE,  
BROADMEADOW

OPEN 10AM – 4.30PM DAILY  
ADMISSION CHARGES APPLY

[WWW.CRAFTEVENTS.COM.AU](http://WWW.CRAFTEVENTS.COM.AU)

Supported by

**Better  
Homes**  
and Gardens.

Organised by

  
**EXPERTISE EVENTS**  
experience shows  
02 9452 7575



Like us on Facebook



**VALE**  
**CHARLIE SPITERI**

**1941 – 2013**

Charlie was a member of Western Sydney Wood turners joining in January 2011 where he regularly attended.

He was one of those guys who would do anything for you and dedicated most of his turning skills into making charity bowls.

He was unselfish in his giving and will be remembered for that along with many other things far to long to mention.

Unfortunately Charlie could not overcome months of suffered with cancer and a recent operation, he passed away in Westmead Hospital with his family at his bed side.

Charlie will not only be missed by his family but also the members of this club.

**Eddie**



One of our Friday nighters

**DAVID SEARLE**

Was awarded with a

**Highly Commended**

From the  
Annual Hawkesbury Show

For his  
pen entered in to the

Novice Competition

**Congratulations David  
:)**

**Special Meeting – Tools & Equipment Committee**  
**26 June 2013**

President Lathe opened the meeting open at 2400 and declared all members were present with the exception with Member 1428 Bowl Saver Handle whose whereabouts were unknown.

President Lathe proposed that as the meeting had been convened on the petition of Member 8241 Blunt Band Saw Blade and Member 4153 Dirty Towel the issues they had raised should be discussed with a view to formulating a motion.

This was agreed and following intensive and extensive debate the following motion was moved by Member 8241 Blunt Band Saw Blade, seconded by Member 4153 Dirty Towel and carried unanimously.

**Motion:**

The President WSWT to be advised that Tools and Equipment wished to convey their disappointment in the Human Members of WSWT some of whom were treating the Tools and Equipment Members with disrespect.

Examples citing this disrespect include:

Bandsaws felt unloved because contrary to Club rules there were times when only one member was present during usage.

Large Bandsaw complained about inappropriate usage citing instances of members attempting curved when he should only be used for straight cuts.

Towels complained that they were being overworked and frequently denied their Wash Break.

Toolkits stated that their aim of being efficient was repeatedly blunted because of lack of sharpening.

Bandsaw Blades and Grinders said their health was often placed in jeopardy because they were too often abused and felt out of shape.

The Urn complained that she was at risk of burnout as she often felt drained but few offered her a drink.

The Vacuums expressed a morbid fear of obesity because they were too often overfed before being assisted to evacuate.

The Storeroom said she was in a constant state of stress as her children were frequently being taken for an outing and were returned late or not at all.

The Dust extractors supported the comments by Vacuums but added that they were frequently operating below their agreed KPI due to (a) Gates not being opened or (b) too many Gates being open when equipment was not being used.

Light bulbs advised that they many were now planning early retirement due to not being given Lunchbreaks.

Benches advised that they sometimes feared being made redundant as they were frequently being junked.

Garbage Bins said they took pride in their different roles but often felt belittled by being forced to consume materials that were contrary to their diets.

Gardens and Lawns expressed disappointment that their efforts to look their best were often impeded by rubbish (which was blown in on the wind or dumped by passers-by) was not cleaned up. The back yard lawn added that too often piles of sawdust from the chainsaw prevented their access to sunlight.

Lathes stated that they would be more efficient if they were allowed to keep all their ancillary equipment in place - frequently it was "borrowed" not returned.

Many members stated that they had suffered bouts of depression when they were in need of repair or adjustment and this information was not conveyed to the Maintenance Committee.

Mr Glue-up Bench asked if he was suffering from "BO" or some other ailment as he had never been visited by some Human Members.

Shop stated it was becoming overstaffed as too many members appeared to have put themselves on the payroll.

Paper Towel and Toilet Roll holder suggested that they should be replaced with easier to use models as it seemed their design was too complicated for some members to operate when they were in need of a new roll.

Rubber Mats asked that members be reminded that they can only perform when they are placed flat on the floor in front of a piece of equipment.

There being no further business President Lathe closed the meeting at 0230.

**Next Meeting:** Hopefully there won't be a need for one!!!!!!!!!!!!!!!!!!!!!!!!!!!!

# Wood Working

## Made Easy

### PT-6 Planer Jointer

- 150mm width capacity
- Long 1200mm cast iron tables
- 3 blade cutter head
- Includes stand & Ø100mm dust chute
- 13mm rebating
- 0.75kW / 1hp 240V motor

**\$449** (W619)

**SAVE**



### RT-100 Sliding Router Table

- 785 x 560mm table
- Suitable for brand name routers
- Sliding aluminium table
- 60mm dust chute
- Fully adjustable squaring guide & hold-down clamps
- Table tilts 45° for easy access to mount router

**\$419** (W4485)

**SAVE**



### TS250RS Panel Saw

- 254mm diameter saw blade with 45° tilting arbor
- 80mm @ 90°, 54mm @ 45° depth of cut
- Fence includes adjustable flip over stop
- 1200 x 238mm sliding table size
- 800 x 620mm work table
- 600mm ripping capacity
- 1.5kW / 2hp 240V motor

**\$1,495** (W688)

**Woodfast**



### Basato 3h Vario Wood Band Saw

- 305 x 205mm cutting capacity
- Unique variable speed drive system 370 to 750m/min
- 548 x 400mm cast iron table
- Twin 3-roller precision blade guides
- Precision rip fence with magnifier
- Patented table tilting from -17° to +45°
- 800W / 1.06hp, 240V motor
- Includes heavy duty mitre gauge & 95mm dust chute

**\$649** (W855)

**scheppach**



### DC-3 Dust Collector

- 1200CFM
- Portable on wheels
- 5 micron fine filter bag
- Twin inlets Ø100mm
- 1.5kW / 2hp 240V motor

**\$279** (W394)

**SAVE**



### PS-1810 Panel Saw

- Ø315mm main saw blade @4500rpm
- Ø90mm scribe blade
- 1800mm sliding table stroke
- 45° tilting arbor
- 100mm @ 90°, 80mm @ 45° depth of cut
- Adjustable quick action material clamp on sliding table
- 2280mm cross cut with flip over stop
- 1240mm ripping capacity
- Precision ground cast iron table
- 2.6kW / 3.5hp 240V motor

**\$2,255** (W700)



### WL-46A Electronic Variable Speed Wood Lathe

- 462mm swing over bed
- 1194mm between centres
- Cast iron construction, bed, head and tailstock
- 1.5kW / 2hp 240V variable speed motor

**\$1,595** (W387)

**SAVE**



### TH410 Thicknesser

- 407 x 225mm capacity (W x H)
- 3 blade cutter head, 5300rpm
- Cast iron table 600 x 415mm
- 120mm dust extraction outlet
- In-feed & out-feed support arms
- 2.25kW / 3hp 240V motor
- Includes Ø100mm dust chute & DRO height gauge

**\$1,495** (W680)

**Woodfast**



**ORDER TODAY!**

**USE PROMO CODE: WOODCHIP7 TO RECEIVE THESE SPECIAL PRICES ONLINE OR INSTORE! Valid until 04-08-13**

Specifications & Prices are subject to change without notification. All prices include GST and valid until 04-08-13

**HARE & FORBES**  
**MACHINERY HOUSE**

**NSW**  
(02) 9890 9111  
1/2 Windsor Rd,  
Northmead

**QLD**  
(07) 3274 4222  
626 Boundary Rd,  
Coopers Plains

**VIC**  
(03) 9212 4422  
1 Fowler Rd,  
Dandenong

**WA**  
(08) 9373 9999  
41-43 Abemethy Rd,  
Belmont

[www.machineryhouse.com.au](http://www.machineryhouse.com.au)

## **CLUB EVENTS**

*We are fortunate enough to have many opportunities to promote our club and members with our attendance at these events.*

*Please help us to help you if at all possible—even one hour to assist at one or more of below events—write your name on relevant clip board on notice board*

\*\*

### **LINWOOD HOUSE**

**Sales & Demonstrations**

**14th July 2013**

**10am to 4pm**

\*\*

### **WISTERIA HOUSE**

**Sales & Demonstration**

**14th & 22nd September 2013**

**10am to 4pm**

\*\*

### **NEWCASTLE STITCHES & CRAFT**

**Sales & Demonstrations**

**14th to 18th August 2013**

\*\*

### **CHRISTMAS PARTY**

**Sunday 28th July 2013**

**11:30am to 1:30pm**

**\$ 20.00 per person**

**SEVEN HILLS RSL**

\*\*

## **BIG BLOKES BREAKFAST**

**Sales & Demonstrations**

**28th August 2013**

**7:30am to 11:00am**

\*\*

## **ST MARY'S SPRING FESTIVAL**

**Sales & Demonstrations**

**7th September 2013**

\*\*

### **ANDI WOLF**

**Demonstration \$25pp**

**6th October 2013**

## **WINSTON HEIGHTS P.S.**

**Sales & Demonstrations**

**13th October 2013**

\*\*

## **BLACKTOWN ARTS & CRAFTS**

**Sales Only**

**27th October 2013**

**Blacktown Showgrounds**

\*\*

## JULY MAXI DAY

Another beautiful day at Twin Gums Resort Maxi Day. The members were pleased to welcome the **guest presenter Neil Collier** from the Hawkesbury Wood Craft Co-Op and Turning Club.

Neil has been a hobby wood crafter and turner for about 15 years who appears to enjoy setting himself problems and then solving them.

Neil commenced his presentation by describing his outstanding all wood full size motor bike "The Axe" in which all parts were made of wood including the segments of the chain. One thing that appeared to fascinate the club members was his barbed wire fence (all wood).

After this Neil continued the presentation by discussing a number of items he has been experimenting with and the solutions he arrived at in solving them. He then went onto discuss turning "Hebal blocks" using that much maligned turning tool the screw driver.

During all this Neil held the audience spell bound. The meeting then broke up for lunch catered for by Rohan (another master piece).

The afternoon commenced with Show and Tell hosted by Neil and while the number of items on display were down on our usual quantity there was I bit of an attempt to accept the monthly challenge we have reintroduced. Neil was very positive in his critique of the works, he did comment on how few of the committee presented work and failed to set an example to other members.

(I must rise to Kens defense as he must have been suffering from jet lag).

Neil then returned to the presentation where he turned an interesting top, he then showed an "Aladdin's Lamp", this then involved into a 3 part tea candle holder which he commenced to turn. During the turning he involved the audience in the design elements of the item. I must say Neil's question and answer technique was a joy to behold. Neil refused to accept payment for his services but extracted a promise that Western Sydney Wood turners would provide a presenter / presentation for his club.

In all Neil produced a brilliant presentation and I feel sorry for those members who did not take advantage of it.

Steve.





**SHOW AND TELL CHALLENGE ITEMS FROM  
STEVE HITCHCOCK, JOHN WALKER AND ROB STEWART**



**LES PRITCHARD**



**MANNY**



**GEORGE WELLS**

**BOB HODGE**

Over 100 species  
Select timber for  
Cabinetmaking  
Furniture  
Joinery  
Woodturning  
Carving

# TREND TIMBERS

15 Railway Road North, Mulgrave NSW 2756  
TELEPHONE: 02 4577 5277 FAX: 02 4577 6846  
Email: [sales@trendtimbers.com.au](mailto:sales@trendtimbers.com.au)

[www.trendtimbers.com.au](http://www.trendtimbers.com.au)

Opening Hours  
**ALL WELCOME!!**  
Mon-Fri 8am-4pm  
Sat 8am-11.30am  
**Closed**  
Public Holidays &  
Long Weekends

## AUSTRALIAN WOODTURNING EXHIBITION 2013

And the winner is **RAY SMITH**, Western Sydney Woodturners. We must all congratulate **Ray Smith** for entering two items in the novice section of laminated or build up section of the

Australian Woodturning Exhibition competition.

The 'square' design picked up **second place** and the 'rounded' design picked up **first place** and also **third place** over all in the novice section.

A great triumph for his first attempt in the competition.

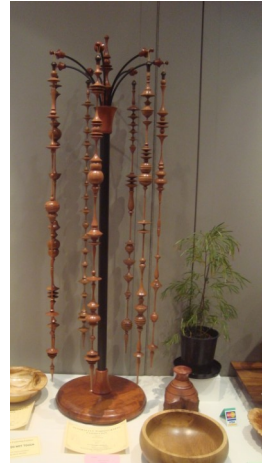
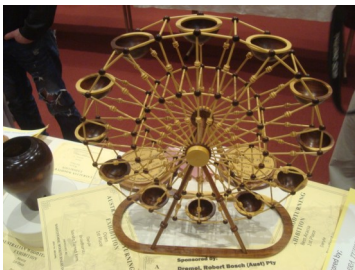
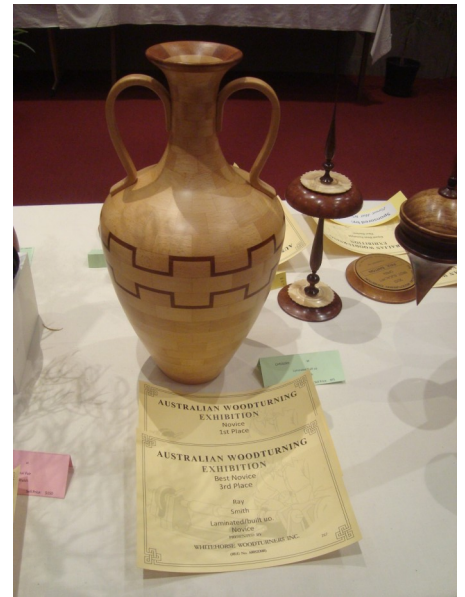
Turning for approximately 4 years, Ray has always been eager to learn different forms of turning but specialized in the segmented form. Not being influenced by other peoples work, Ray has developed his own form or design and production. One day he might tell me how he did the 'square form'. With a great eye for detail, his joints are superb together with his finishing.

With competition so scarce around the Sydney area, turners have to travel to Victoria or Queensland to enter a decent competition and to travel for many local turners is too much to ask.

The Australian Woodturners Exhibition is the foremost completion in the country and checking out the standard at this years exhibition was very high with some well known names being present and the judges of the highest standard.

Once again Ray, well done and hope its bigger and better things to come next year.

**Ken**



OVERALL WINNER

OTHER WINNERS

## 2013 Committee

<b>President:</b>	<b>Bob Young</b> <b>0408 760 131</b>
<b>Vice-presidents:</b>	<b>Steve Hitchcock,</b> <b>Ken Vodden</b>
<b>Treasurer:</b>	<b>Paul Collins JP</b>
<b>Grants Officer &amp; Membership Sec:</b>	<b>Raymond Saich</b>
<b>Secretary &amp; Public Officer:</b>	<b>Alan Eipper</b>
<b>Catering Officer:</b>	<b>Rohan McCardell</b>
<b>Library:</b>	<b>Gary Hansell</b>
<b>Editor:</b>	<b>Wendy Healy</b> healydesign@bigpond.com
<b>Trainer:</b>	<b>Bob 'Santa' Hodge</b>
<b>Shop Manager:</b>	<b>Brian Brooks</b>
<b>Stores, Equipment &amp; Maintenance:</b>	<b>Graham Dawes JP.</b> <b>Manny Farrugia</b> <b>Dave Matthews</b>
<b>Welfare Officer:</b>	<b>Graham Murray</b> (0412 913 508)

Please let them know if you find any problems with any of the machinery in the hall.

If you know that any member or their partner is not well, give Graham a call and he'll organise a card to be sent.

\*\*\*\*  
**SHOP TRADING HOURS**  
\*\*\*\*

MON - FRI 9:00 AM - 10:30 AM  
12:45 PM - 1:30 PM  
FRI ONLY 7:00 PM - 7:30 PM

NO TRADE OUTSIDE THESE TIMES  
UNLESS BY PRIOR ARRANGEMENT.

## Please note:

### New email addresses for the guild

sydneywoodturners@gmail.com

Please email David King at above email for the contact details for WSWT executive and guild reps.

## DATES TO REMEMBER

### CLUB MEETINGS

13th Aug 2013

10th Sep 2013

Tuesday 7pm

\*\*

### SATURDAY WORKSHOPS

20th July 2013

17th Aug 2013

9:30am to 3:00pm

\$ 5.00

Ph: Liam 0411 560 984

\*\*

### MAXI DAYS

21st July 2013

18th Aug 2013

9:30am to 3:00pm

\$ 6.00

Light Lunch Provided

Guest Demonstrators

Or

Open Workshops

\*\*

# ANDI WOLF

COMING TO  
WESTERN SYDNEY WOODTURNERS  
SUNDAY OCTOBER 6TH (DEFINITE)  
FOR A DEMO AT \$25.00 PER HD  
MAXIMUM OF 50 SEATS  
GET IN EARLY  
**BOOK NOW**  
AS OTHER CLUBS HAS BEEN INVITED

**HOPEFULLY**

WE HAVE A WORKSHOP ON THE 5TH  
**6 PEOPLE AT \$110.00 PER HD**  
IF INTEREST IS GOOD FOR ANOTHER DEMO,  
IT COULD TAKE PLACE ON THE 5TH  
**PLEASE DO THE RIGHT THING**  
AND BOOK EARLY SO WE CAN ADJUST IF REQUIRED

