

WesTurn News

Issue 188

10th May 2016

Western Sydney Woodturners Inc
Twin Gums Retreat, Corner Northcott Road and Diane Drive
PO Box 4008, Lalor Park NSW 2147
Web Site: www.westernsydneywoodturners.com



President's Report

Due to a number of reasons Bob has asked me, or should I say delegated to me the task of compiling this month's President's Report.

The recent month has seen a number of activities for the club including the Bunning's bbq, Trend Timbers Open Day and St Bartholomew's as well as the Guilio Marcolongo workshop and demonstration all occurring on the one weekend. This meant that we were spread a bit thin however all events were reasonably well supported by the members and I know that I speak on behalf of my fellow Executive in saying thank you to all those who supported the club on this weekend.

Guilio's maxi day demonstration was only fairly attended by club members which was a bit disappointing. If several visitors, including some members from other woodturning clubs had not attended, it would have been a disappointing number of attendees. Those who did not attend missed out on a great opportunity to learn new techniques as well as see a world renowned turner in action. You could not help but learn something from watching Guilio.

For those interested we will most likely have copies of the DVD of the Maxi day demonstration for sale. Please put your name on the board at the club if you want a copy. I understand that members have various commitments and responsibilities that preclude them from attending Maxi Day's but surely it is not too much to expect that more than 16 members (less than 10% of members) from the club would be interested.

On the club front Bob and I have been undertaking some maintenance on club machines including the drum sander. To say that I was disappointed to see that we had put a new sanding belt on the machine on the Monday only to find it had been used on Wednesday and it was destroyed on the first day of use. I understand that accidents happen but this was in my opinion not an accident, rather caused my miss use. The belts are not cheap to replace, not to mention the inconvenience to members wanting to use the machines only to find out that they are out of order due to the negligent use by some people and subsequently waiting for someone from the maintenance crew to repair or replace the damaged equipment.

It has also been noticed that the Ryobi drop/compound slide saw fence has been broken and is now out of alignment. This again does not happen when the equipment is used in the proper manner. If you don't know how to operate the machine properly then ask the convenor for assistance. Similarly, when using the machines and you experience a problem or detect a problem, then tell the convenor or an executive member so something can be done to fix the problem.

Please respect the club and the equipment that is there for the member's use. That way we can all enjoy the facilities that have been provided.

Paul de Belle

Club Committee

President: Bob Young (0408760131)

Vice Presidents: Paul de Belle and
David Searle

Secretary: Alan Eipper

Treasurer: Paul Collins

Grants Officer & Membership Secretary:
Raymond Saich

Catering Officer: Fiona Deane

Librarian: Gary Hansell

Editor: Ron Fathers
ron1947@optusnet.com.au

Assistant Editor: James (Jimmy) Singh
Jimmy-Woodturner@hotmail.com

Webmaster: Lindsay McEwen
Lcmcewen@optusnet.com.au

Training Co-ordinator: Ron Devine

Trainers: Graham Dawes, Rod Brown and
Alan Phelps

Shop Managers:
Paul Collins (JP) and Bob Young

Stores, Equipment & Maintenance:
Manny Farrugia, Dave Matthews,
Graham Dawes (JP)

Welfare Officer: Steve Attard
s.attard84@gmail.com

If you have any problems or information concerning the club please contact any of the above committee members.

Club Badges

Any Member who hasn't received their name tag yet or if you just need a new one, please let me know and I will make you one as soon as I can.

Jimmy Singh

Shop items

Triple "P"
Friction Polish
Sanding Sealer
Sandpaper
Club Shirts
Dust jackets
Club Badges
Pen Kits
Pen Blanks – Acrylics
Many more items also available

Shop Trading Hours

Mon-Thurs: 9am – 10:30am
12:45 – 1:30pm
Friday nights: 7pm – 7:30pm
See Paul Collins or Bob Young for more details



Thanks to Michelle Rowland MP, The member for Greenway, for her continued support which includes the printing of this newsletter

Club Trading Hours

Mon-Thurs: 8:30am – 4pm \$5
Friday Nights: 5pm – 9pm \$3

Third Saturday of the month:

9am – 3pm \$5
21st May
18th June
16th July

Contact: Liam Healy – 0411560984

Ladies Day – Second Saturday of the month:

11th June \$5
9th July
Contact: Anna Dawes – 96386995
tandawes@optusnet.com.au

Maxi Day – Third Sunday of the month:

From 9:30am (Lunch included) \$6
15th May – Rohan McCardell
19th June – Andy Tapporus
Bandsaw Box Making

Club Meetings

Second Tuesday of the month – 7pm

10th May
14th June
12th July

Pens Wanted for the Troops

Can members please make and donate any pens for the troops. Please give them to the convenor on your day.

Thankyou so much! Editors

New Members

Welcome to all our new members this month. We hope your stay is both long and rewarding

Robert Ryan	Greg Tan
Hayden Tan	Rourke Golder
Mike Mulcahy	Angus Frawley
Pragnesh Vaghela	

Happy Birthday

Happy Birthday to all our members this month. We hope you have a great day with many more to come.

Lawrence Benjamin	Peter Bohan
Rodney Brown	Gordon Dick
Wendy Healy	Ken Iles
Meera Jagadeesh	Justin Kahane
Michael Killen	Anne Kintominas
Danny Klajman	Hans Kuehn
Lawrence Mifsud	Marc Parsell
Nev Parsons	David Searle
Eva Steli-Gajdos	Greg Tan
Andy Tappouras	Shane Yeaman

Note to All Members

Annual renewals will be sent out shortly to all members except those who joined after 1st April 2016 who are covered by the amnesty.

Also a reminder to members that the revised draft constitution is available to review in the members only section of the WSWT website or a hard copy can be found at the club, please contact Raymond Saich or any of the committee for the password.

Editor

COMING EVENTS

Bunning BBQ's

Seven Hills – 8am to 3:30pm (Setup 7am)

- Saturday 23rd July
- Monday 3rd October

KOI Society – Pet and Garden Show

Fairfield Showground – 9am to 4pm

- Sunday 15th May

Blacktown Festival

Main Street Blacktown – 9am to 4pm (Setup 6am)

- Saturday 28th May

Linnwood House

25 Byron Road Guildford – 11am to 4pm (Setup 8am)

- Sunday 10th July

- **Any members interested in going to these events please put your name on the clipboards at the club**

- **MEMBERS – WE REALLY NEED MORE CHARITY BOWLS! So PLEASE make as many as you can 😊**

Wood for sale

Members don't forget we have a lot of wood and Benchtops for sale so please come in and buy some.

The wood varieties are:

Huon Pine, Sassafrass, Olive, African Olive, Yellow Wood, Jacarandra, Swamp Maghony, White Cedar, Tallow Wood, Norfolk Pine, London Plane and American Tulip Wood

Benchtops are:

Cherry, Sapele, Walnut, European Oak and Alder

We also have Corian which is FREE

White- 12mm and 20mm thick

Grey-12mm thick

Black-12mm thick

B S FROM THE BUSH, MAY 2016

Here we are one month from Winter and we are getting temperatures during the day of around 23 to 27 degrees. Night time is cooling down though, getting into the single figures.

It has been another busy month, what with school holidays, therefore spending time with the kids and then a couple of weeks ago at the local show where Chris put some stuff in the competition and did well. She also put in a piece of mine, as it was the only one there I did very well but also got 'best in handicraft' whatever that means. Ended up with more money than I spent. As the kids were here, they wanted to stay to see the fireworks late at night. Chris and I had been BBQing all day for the Lions Club, starting at 7 and finishing at 4 then we joined them and went around to side show alley. The kids even got onto a couple of rides. A good day out.



As you can see, I have been doing a little more turning, The showroom is almost set up with shelving etc. now I can see what is required to fill it.

As I am still a member of this great Club and still have an interest on what is going on, there are two items of interest. Firstly I urge all members to read the new Draft Constitution. This has taken over 2 yrs to put together, so it should be right, yet I have found mistakes in it, if you do the same make it be known to the Executive.

Secondly, July is not far away and the election of the Executive and other positions will happen at the AGM, if you think you can help in any way to keep the Club going, please put your hand up or if you think someone else could do a good job, give them a nudge and have a chat.

Ken

Bunnings BBQ

As some of the other reports have mentioned a very busy few days for the club. I decided to help out at the Bunnings b-b-q which is a very important event in our calendar. The profits made from the b-b-q go a long way to maintaining the various tools and equipment. Most members just think their \$5 a day is enough to pay for replacement of all the saw blades, sanding discs, drill bits, etc but it takes a lot of \$5 to replace just 1 saw blade. So when a Bunnings day comes around we must support it and take in as much as we can on the day.

Some b-b-q's we have struggled with enough people to run it but this month I was pleased to see a good turnout. A few of our new members were there and it gave me a chance to find out a little bit about them and for them to ask us things that they were not sure about in the club or about their woodworking.

I did the afternoon shift only but I believe there were about 9 members in the morning and about 9 again for the afternoon with a few of those dedicated enough to work the whole day. A big thank you to all those who came down.

The day was about average, a good day but well short of our best. A nice steady flow of hungry d.i.y.ers kept the sausages turning over.

The next Bunnings is in July so get the clipboard down and put your name on it, it feels good to know you contribute something towards our club.

Ron Fathers



Trend Timbers

Friday 15th April: It was the start of a pretty busy three day period for the club. The start for the weekend was the Trend Timbers Open Day.

The club was represented by Leida Jedniuk, Barbara Clarke, Steve Hitchcock and myself. The only drawback was that we had one lathe to keep us all occupied. There were several other members who showed up during the day to commercially support Trend Timbers although they were offered the use of the tools to demonstrate they did not take up the offer.

The number of customers were somewhat small compared to other years but there was, never the less, a steady interest in what the club members were turning, which was predominantly charity items, as well as taking an interest in the personally turned items that were on display. Barbara's pens were very appealing to a number of those interested in what we were and had been doing.

Due to other commitments on the following day none of the members from Friday were able to attend the Saturday and I would like to thank those who carried the flag on Saturday especially considering that we had the Gulio's Workshop as well as the Bunnings BBQ.



Paul de Belle

Saturday 16th April: After an early start Bob Taylor, George Hulme, and myself arrived to a warm welcome from Adrian and a breakfast of bacon / egg / sausage roll, tea, coffee or soft drink of your choosing. After a short time Bob Jarvis arrived and started demonstrating to a small crowd by making a bowl, George and Bob also shared time on the lathe. While the weather being on side this year and not raining the attendance was slow, consistent and inquisitive which helped make the day. All in all a good day was had by all.



Eddie C.

St Bart's Open Day

April 16th was a very busy Day for our club. We had four different commitments on that day.

The most enjoyable one I think would have had to be our yearly participation at Saint Bartholomew's church open day at Prospect. Built in 1841 this quaint historical church on top of Prospect Hill is surrounded by a historical graveyard.

This year they celebrate the 175th year of the opening of the church and cemetery.

The most famous grave is that of William Lawson, one of the first settlers to cross the Blue Mountains and other members of his family, as well as that of Thomas Willmont first Shire President of Blacktown.

The church operated until the end of 1967 when it was closed due to increasing vandalism.

The day turned out to be a rather warm one and the shuttle bus ran all day between Blacktown and the church. We had a decent crowd and they seem to enjoy all the stalls and activities.

We had ladies dressed in period dress we had soldiers dressed in NSW Rum Corp uniforms showing off their muskets firing skills and the bellowing voice of the Town Crier (very impressive!)

Our four wood turners set up for a busy day, demonstrating our skill on the lathe, with people looking on and kids waiting for their spinning tops (which were very popular.)

We managed to show off our finished wares and people were very impressed, wanting to know how things were made. We even managed to entice a few to come to our clubhouse and maybe join up.

We made the point that it's very easy when you're shown how it's done! We also managed to sell some of our wares, which come in quite handy!



All in all we had a good time and thoroughly enjoyed the day. Here's to next year...

Lawrence Mifsud



Guilio's Workshop

Six intrepid club members arrived at the club on Saturday between 8.00 and 8.30am for a day of turning under the direction of Guilio Marcolongo for the much anticipated workshop.

The day got underway soon after 9.00am and the first item was to turn a square edged bowl. This was somewhat of a daunting task for those of us who had never previously attempted such an item; however Guilio soon dispelled some of our fears with a demonstration on what to do.

So off went those members and got under way on the project, Once the edge had been turned down to form the wings then the fun part started on shaping the outside of the bowl to have the wings exposed. There were a couple of us who had never previously attempted such an item that were doing this very tentatively, however with Guilio's help they soon got going.

Once this had been completed it was interesting to see the various shapes that had been formed. There were a couple of members who were a bit heavy handed and paid the price for this with some damage to the wings, but it then became, to quote Guilio, "A design change."

Once the outside of the bowl had been shaped it was time to hollow out the inside. Again it was interesting to see the techniques used, one thing that was quickly learnt was to follow the outside shape and the fact that the inside bottom of the bowl was to be rounded and not flat.

The final outcome achieved was in some cases a very nice square edged bowl however some of the wings were very thin. I can see some practice will bring much better results, especially for me.

After lunch we were shown how to do a Hawaiian Calabash bowl. Here I will show my ignorance in saying that I had never heard of such an item.

This also was to be done using the texturing tool or decorating tool. Again Guilio showed us what was required then away we went to turn our humble piece of timber into something to behold. The results were somewhat varied as a number of members used different types of timbers and decorating tools, some using the Joe Wagner texturing tool and others using the Robert Sorby spiraling tool.

Finally due to time restrictions a number of us did not have sufficient time to complete the third item which was a dibbler. Again Guilio led the way in showing how to do this item using only a roughing gouge.

Considering the number of projects that we were to do everyone enjoyed the day and I am sure that we have come away better turners for having participated in the workshop.

Paul de Belle



Maxi Day with Giulio Marcolongo

Sunday the 17th April

There was a reasonable amount of people turned up. It was good to welcome the guys from Hornsby club who made up the numbers.

Giulio is probably the best demonstrator I have seen. He's very professional and a friendly guy with a good sense of humour. He's a great woodturner with a large repertoire of turnings. He is also the most energetic guy. He started around 9.15am and went till 5.15pm with a few breaks. That's a heck of a long day. Anyhow he did five projects

Job No 1: Was a pepper and salt grinder made from Camphor Laurel. This was a between centres job. I can't describe the various operations as they are too complex. He turned the outside with a roughing gouge then scraped the surface with a skew up to a good off the tool finish. The hole was drilled down the centre with a 25mm fluted drill. This is the best way I have seen it done. He cut the top off and then with the aid of an offset chuck he designed, he turned the top part to an offset shape, which I found pleasing to the eye. The offset chuck fits into any expanding jaws type chuck and is simple to set up and use. The finishing and the techniques used I will go into later.



Job No2: Was a box incorporating a sphere with a lid. It's impossible to describe what it looks like; you have to see the finished job. He used the skew as a scraper to form the sphere and the spherical lid. Again he used offset turning. It was a fairly involved process.

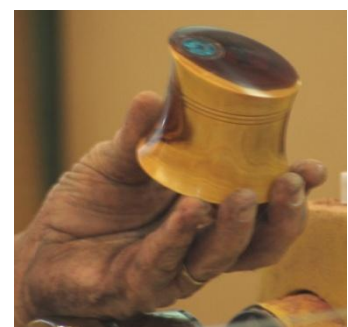
Job No 3: Was an off centre bowl made from Huon Pine using blue food dye to accentuate the inside of the bowl and the edge. He used a burn line to stop the dye from bleeding thru to the main body. He uses a lot of jam chucks he makes on the spot to facilitate his turning.



Job No 4: Was a round ended spoon with a barley twist handle. It started off as a ball turned on the end of a stick. Then by stages made into a spoon. The barley twist handle he marked out as a spiral with the lathe turning slowly. He then proceeded to form the groove of the twist with the lathe stationary with a small diameter wood file. It ended up very eye-catching.



Job No 5: Was a small lidded box. The wood was called "Dead Finish" it comes from the dry desert areas of North Queensland and its very hard. The centre wood is almost black and the outside sapwood is an off white. It's very rare but beautiful. Giulio mainly used a skew as a scraper to shape this. It ended up a beautiful finish.



Finishing:

Guilio's finish is first class one of the best I have ever seen. He does a very good off the tool finish and uses his various sized skewers and scrapers on the job and gets excellent results. He uses and recommends negative rake scrapers of different shapes and sizes. These are the latest trend in tools. I have converted my scrapers to this and find them to be very good. He then uses a rotary hand sander, starts with 180 grit and sands up to 400. He then gets thin superglue on a rag and gives the job one or two coats of this. He then lets it dry which only takes a minute or two. This makes a terrific sealer and base. He then polishes it with Triple E. This gives the glue a cut and polish. Then removes all traces of the Triple E with a rag and then polishes the job with "Glow" a friction polish. The final product is beautiful.

I have recently started to introduce this system into the club and we have all the materials you need in the shop

Tools:

Guilio sharpens all his tools freehand on a grinder, which takes a fair degree of skill. He uses the tool straight from the grinder using the burr created as a cutting edge. I am starting to sharpen this way and the CBN wheel we have is ideal for this. I noticed he has several different size skewers which he utilises as scrapers.

His bowl gouge is 12mm with short angle swept back grind. The roughing gouge is 25mm with a standard grind around 30 to 40 deg. He certainly knows how to use his tools well and the final result is excellent.

Manny and Fiona supplied a great lunch. We had several breaks during the day. I think I was the only one to nod off a couple of times.

We finished around 5.15pm and I think we all agree that it was a great day.



Alan Phelps



Show and Tell

Guilio Marcolongo



Ray Smith



Various – Lacquer



Various – Lacquer



Various – Lacquer



Plywood, Cherry, Walnut & Rock Maple - Lacquer



Plywood & Sapele - Lacquer



Sapele & Unknown - Lacquer

Guilio Marcolongo



Raymond Saich



Blackwood & Huon Pine

Friction Polish



Sharing Everything



The little old couple walked slowly into McDonalds one cold winter evening. They looked out of place amid the young families and young couples and teens eating there that night. Some customers looked admiringly at them. You could tell what the admirers were thinking. "Look, there is a couple who have been through a lot together, probably for 60 years or more" said one man to his wife.

The little old man walked up to the cash register, placed his order paid and accepted their meal. They took a table near the back wall and started taking the food off the tray. There was one hamburger, one order of French fries and one drink.

The little old man unwrapped the plain hamburger and carefully cut it in half. He placed one half in front of his wife. Then he carefully counted out the French fries, divided them into two piles and neatly placed one pile in front of his wife. He took a sip of the drink; his wife took a sip and then set the cup down between them.

As the man began to eat his French fries a young man stood and came over to the old couples table. He politely offered to buy another meal for the old couple to eat. The old man replied that they were just fine. They were used to sharing everything. Then the crowd noticed that the little old lady had not eaten a bite. She just sat there watching her husband eat and occasionally taking turns sipping the drink.

Again the young man come over and begged them to let him buy them something more to eat. This time the lady explained that no, they were used to sharing everything together. As the little old man finished eating and was wiping his face neatly with a napkin the young man could stand it no longer. Again he came over to their table and offered to buy some food. After being politely refused again he finally asked a question of the little old lady. "Madam, why aren't you eating? You said that you share everything. What is it that you are waiting for?" The lady answered, "The teeth."

What a pity there is not more caring, sharing and such patience, as displayed by the little old lady, in the world today.

Quote of the month:

Great minds discuss ideas; Average minds discuss events; Small minds discuss people.

- Eleanor Roosevelt

Must Fly Woodchip

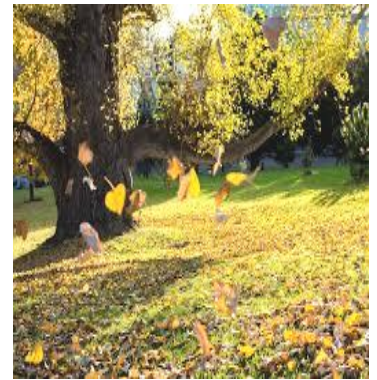
A Favourite Time



I love to write of autumn
A much loved favourite time
And I am not alone so it would seem
Songs abound to charm us
Like the lovely "Autumn Leaves"
The beauty of this time is like a dream



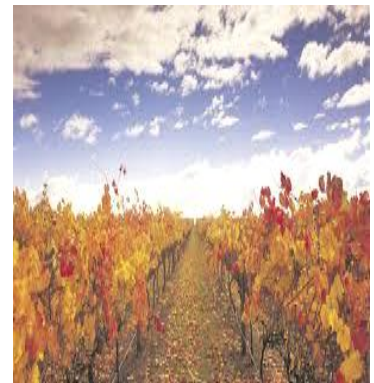
We all know Mother Nature
And the palette she can show
And even she excels when autumn calls
And colours red and softly brown
Are turning now to orange
And the landscape seems to change
as each leaf falls



Nat Cole sang of these colours
He sang of red and gold
Of autumn leaves that softly drifted by
And somehow his sweet dulcet tones
Were just right for this time
And every single time it makes me sigh



As I write it seems that autumn
Is running late this year
I hope it doesn't change our colour show
So I'll take more time to notice
And camera them as well
To capture their sweet magic ere they go



Neil Guthrie

Safety Matters

A Reminder about Workshop Safety

We must all keep in mind the importance of WORKSHOP SAFETY. Please THINK and ACT responsibly at all times.

It is up to all of us to fulfill our commitment by wearing at all times;

- ✓ Dust masks
- ✓ Protective glasses
- ✓ Suitable clothing
- ✓ Footwear
- ✓ Ear protection

It does not hurt to discuss safety with other members if they are not doing the right thing.

REMEMBER..... It is your body and your limbs.....



TREND TIMBERS

SPECIALIST IN FINE WOODS

Established 1969 A third generation timber family



YOUR 1 STOP WOODWORKING SHOP IN NSW

Over 100 species
Select timbers for
Cabinetmaking
Furniture
Joinery
Woodturning
Carving

TREND TIMBERS
15 Railway Road North,
Mulgrave NSW 2756
TELEPHONE: 02 4577 5277
FAX: 02 4577 6846
Email: sales@trendtimbers.com.au
www.trendtimbers.com.au

Opening Hours
ALL WELCOME!!
Mon- Fri 8am-4pm
Sat 8am-11.30am
Closed
Public Holidays &
Long Weekends

"Setting the standard for Quality & Value"



THE WOOD WORKERS CHOICE!

Metal Working	Sheet Metal Fabrication	Wood Working	Cutting Tools	Machine Tool Accessories	Measuring Equipment	Workshop & Automotive	Lifting Handling	School & Tafe Equipment
---------------	-------------------------	--------------	---------------	--------------------------	---------------------	-----------------------	------------------	-------------------------

Tiger 200S Wetstone Grinder

- German design & technology
- 200mm stone & hone wheels
- 120W, 240V motor
- Includes straight edge jig, setting gauge & honing paste



Order Code: W859

\$253



Deco Flex Scroll Saw

- 406mm throat cap.
- Tilting table 0-45°
- 90W / 240V motor
- Variable speeds
- Includes light, air blower & flexidrive shaft with chuck

Order Code: W348

\$242



PJ-6B Bench Planer Jointer

- 153mm capacity
- Built-in dust fan with collection bag
- 10000rpm blade speed
- Cast iron table & fence
- 1.1kW / 1.5hp 240V motor

Order Code: W618

\$473



T-13A Thicknesser Bench Mount

- 330 x 152mm capacity
- 2 x HSS blades
- Anti-kick back fingers
- 2.4hp, 240V motor

Order Code: W813

\$539



hf-50 Bench Top Router

- 610 x 360mm cast iron table
- 8000 - 24000rpm var. speed
- 0 - 40mm spindle height
- 1.5kW / 2hp, 240V motor



Order Code: W846

\$440



INCLUDES MITRE GUIDE

Slik 7.0b Oscillating Belt Sander

- German design & technology
- 850 x 300mm cast iron table
- Tilting sanding belt 90-180°
- 2515mm x 150mm belt size
- 2.9kW / 3.8hp 240V motor
- Includes stand with dust collector

Order Code: L904

\$1,859



PL-75 Circular Plunge & Mitre Cut Saw - Package

- 210mm saw blade
- 45° saw head tilt
- 75mm cut depth @ 90°
- 1.6kW/2.1hp, 240V

- PL-75 Circular Plunge & Mitre Cut Saw (W881)
- Guide Joiner, Clamps & Stop Accessory Kit (W877)
- cs55-RAIL Aluminium Guide Rail (W876)
- Stop Accessory Kit (W877)

Order Code: W884

\$429



TABLE TILTS TO 45°

BP-310 Wood Band Saw

- 305 x 165mm capacity
- Cast iron table tilts 45°
- 2 x blade speeds
- LED lighting
- 0.75kW / 1hp 240V

Order Code: W952

\$715

DS-25 Twin Drum Sander

- 635mm width capacity
- 6 - 127mm height cap.
- Variable speed conveyor feed
- Balanced sanding drums
- 2.2kW / 3hp, 240V motor

Order Code: L129

\$2,739



VARIABLE TABLE FEED SPEED

HEAVY DUTY CAST IRON TABLES

M910 Heavy Duty Wood Lathe

- 520 x 975mm turning capacity
- Electronic variable speed 50-3890rpm
- Versatile 24 position indexing
- 2MT tailstock & headstock taper
- 720mm bowl diameter on outboard attachment
- 1.5kW / 2hp 240V inverter motor

Order Code: W885

\$4,565



WOODFAST

Plana 3.0 Planer & Thicknesser Combination

- 260mm planer width
- 1050mm planer table
- 250 x 210mm thicknesser
- 5m/min. thicknesser feed
- 100mm dust collector port
- 3hp, 240V (15 amp)

Order Code: W850

\$2,079



CALL INTO OUR SHOWROOM FOR PROFESSIONAL ADVICE ON HAFCO TOOLS & EQUIPMENT

- CAM Staff Member



UNIQUE PROMO CODE

WTMAY5

ONLINE OR INSTORE!



- ✓ PAPERLESS WARRANTY
- ✓ TRACK YOUR ORDERS
- ✓ EXCLUSIVE OFFERS
- ✓ LATEST RELEASES

- ✓ ONLINE PROMOS
- ✓ CLICK & COLLECT
- ✓ COMPETITIONS
- ✓ NEWSLETTERS

\$70 FREE DISCOUNT VOUCHERS

VIEW AND PURCHASE THESE ITEMS ONLINE AT www.machineryhouse.com.au/WTMAY5

SYDNEY
(02) 9890 9111
1/2 Windsor Rd, Northmead

BRISBANE
(07) 3274 4222
625 Boundary Rd, Coopers Plains

MELBOURNE
(03) 9212 4422
1 Fowler Rd, Dandenong

PERTH
(08) 9373 9999
41-43 Abernethy Rd, Belmont

Specifications & Prices are subject to change without notification. All prices include GST and valid until 31-05-16

04_WTN_MAY_010516

THE BACK PAGE

ITEM 27

Wood Finishing - Series 1

This is the first of a series I intend to write.

What prompted this is we have an ongoing project making bowls which we sell for charity. We recycle timber given to us from a joinery shop. Its only 18mm thick so we laminate and glue this into square blocks. This wood is difficult to turn sand and polish because of its dry porous grain. It's generally referred to as Pacific maple but it comprises of about 6 different species.

We have developed a process where you can turn sand and finish in one operation on the lathe. Notwithstanding the above, all these finishes I am going to describe can be used on any timber, but they were especially developed for a difficult to finish wood.

The finishing materials are made by us and sold cheaply by our shop. They are;

Triple P Wax Polish: Which is a combination of four waxes and a fine cutting compound all combined together into a wax polish

Friction Polish: This is in liquid form, based on Shellac and wax plus a liquid Melamine. This is a modern version of the old French polish with the addition of a hardener

All these materials can be purchased from woodturning suppliers under various trade names.

Method: Firstly turn a bowl. Note, most of the bowls we turn are small, under 150mm dia. Now this is important. The job has to be sanded up to a fine finish otherwise the polish does not work very well. Sand to at least 400g but preferably finer up to 1500g. I power sand this is quicker and gives a scratch free finish. This sanding can be done by hand, no problem, but it takes longer and it's hard to keep the scratches out.

Next Step: We use the Triple P wax first. Now using a small piece of rag or kitchen paper and the lathe stationery, apply the wax liberally, rubbing it well in, especially the end grain. Now start the lathe up keeping the speed down so the wax does not get thrown off. Apply the already waxed section of the cloth and with medium pressure work the wax into the grain. The wax will melt with the friction, and with the cutting compound this will polish the timber and partially fill the grain. With a clean cloth remove all the surplus wax and finally polish.

Now you can use this as a final finish if you wish. But wax is not very durable on its own.

Final Step, Friction Polish: Again using a small piece of rag or kitchen paper and the lathe stationery apply a fairly thin even coat. Then start the lathe on a medium or high speed. Add some extra polish to the wet section of the rag and bring the wet part in contact with the job and apply medium pressure. This will generate friction and heat which will melt and distribute the polish which will amalgamate into the wood. Polish until the job comes up to a high shine. Be careful not to overheat the polish it may go streaky and burn. You can give it several thin coats but be careful not to make it too thick it can go a bit soft and gummy. Finish with a clean cloth just to give a final clean up and shine. You can now handle the bowl quite safely, it's hard enough, but it takes a couple of weeks to fully harden. If you feel that it's too glossy cut it back with OOOO steel wool to what you want.

Note: Wear goggles over your glasses. This stuff is hard to get off once it sets

In my second series we will take this a step further by using some lacquer based sanding sealer

Alan Phelps

Note. As in all professions there are many and varied opinions and ways of doing things. This is true of wood turning. These articles are the results of my reading article publications.