

WestTurn News

Guild Web Site:

<http://www.sydneymwoodturners.com.au>

Issue 85, 10th December 2006.

Western Sydney Woodturners Incorporated

Postal Address: PO Box 4008, Lalor Park, NSW 2147

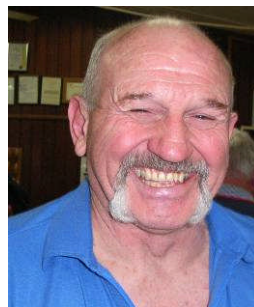
Twin Gums Retreat Address: Cnr Northcott Rd & Diane Dr, Lalor Park

Christmas Issue 2006



Treasurer

Robert Young



Public Officer

Alan Phelps



Introducing our new Committee...

At the inaugural meeting of the Western Sydney Woodturners Incorporated held at Twin Gums on Sunday 19th November, the election of officers for our new club were presided over by our guest demonstrator Gill Scott and voting was by secret ballot.

The results of the election of officers were as follows:

President

Robert Jarvis



Vice-president

Tony Maberly






Secretary

Ian O'Connor



Representatives to the Guild:

		
Erich Aldinger	Robert Taylor	Ron Devine

President's Message:

To all members, have a Happy Christmas and a great New Year. We will be back in action on Tues 9th, Wed 10th and Fri night 12th January 2007.

2006 was a productive year and \$2000 was raised for our charity, the Stroke Support Club. Let us aim to give a similar amount to our 2007 nominated charity.

We've made a new start with our incorporation. We aim to continue to improve our club. Improved screens and filters and some new equipment are planned for the new year. Thanks to all who helped to push this club forward. Our membership is climbing and we are doing well thanks to the friendliness and co-operative attitude of you, our valued members.

Other Officers:

Other positions which are regarded as volunteered or appointed, were automatically rolled over to the new club structure. These include:

Welfare Officer: [Graham Murray](#) 4658 0563

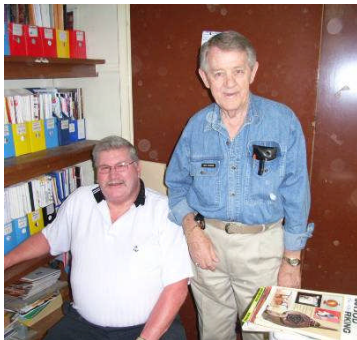
If anyone knows of any of our members or their partners who are on the sick list, please contact Graham who will send a card on behalf of the club.

*Even during the festive season, life goes must go on and things happen. We are sad to report that **Pam, wife of member Malcolm Stig**, is very ill and unfortunately off to hospital. Pause and spare a thought and a prayer for Pam's recovery.*

It's good to hear that Peter Ryan has recovered from his shoulder surgery.

Library: See [Don Hughes](#) if you would like to know what is currently available from our library.

Please remember that some of the items within the library are on loan from other members and all care should be taken to bring them back as soon as you are finished. Just as in other libraries one month is usually sufficient time to have an item out.



By the way, did you know that we have two (count them) members with the name Don Hughes? Here they are in Library Corner after I asked "Would the real Don Hughes stand up."

I'm not convinced!

Catering Officer: [Rohan McCardell](#)

Hey, go ahead and enjoy the party and let's all hope that we can extend the goodwill of Christmas throughout the whole year in our fabulous club.



Stores, Equipment & Maintenance: [Toby McIlwain](#), [Ted Edwards](#) and [Graham Dawes](#). Please let them know if you find any problems with any of the machinery in the hall.

Editor: [Bill Hartley](#) 98716128
williamhartley@optusnet.com.au

Thank you to those who have given me things to include in our newsletter over this year. Also thanks for members who have written reports of demonstrations and excursions. If any of you would like to submit articles, jokes, pictures, etc for future issues, they would be appreciated.

Santa Came Early

Trend Timbers held their regular sale on 10th & 11th November and numerous members were seen snapping up bargains. I know two blokes who will each be getting a new Teknatool lathe in their stocking. Gee, they must have been very good boys!



Western Sydney Woodturners Calendar for 2006/7:

Workshops: Every **Tuesday** from 9.30am, **Wednesday** from 9.30am and **Friday Night** from 7.00pm.

The next workshops are Tues 9th, Wed 10th and Fri 12th January 2007.

Maxidays: Third Sunday every month from 10.00am. There is usually a demonstration by a guest turner. Lunch is provided.

Next Maxiday is Sunday 21st January 2007. This is a HANDS-ON day so bring your tools.

Committee Meeting: The committee meeting is held on the **second Tuesday of the month** starting at 7.00pm at Twin Gums. All are welcome to attend.

No Committee meeting in January. The next Committee meeting is on 13th February 2007.

Ladies Days: Ring or see Anna Dawes for details on 96386995.

Other Coming Events/Demonstrations:

February Maxiday is on Sunday 18th February, so get busy preparing some items for Show & Tell. A guest turner will be demonstrating.

Bowls for Any Event!

Don't forget if you are not turning anything in particular, think about turning one of our blanks. It appears that these are becoming very popular at our demonstrations in the rummage box. They are a significant source of income for the club and our charity work.

Gil Scott Demonstration Sunday 19th November 2006

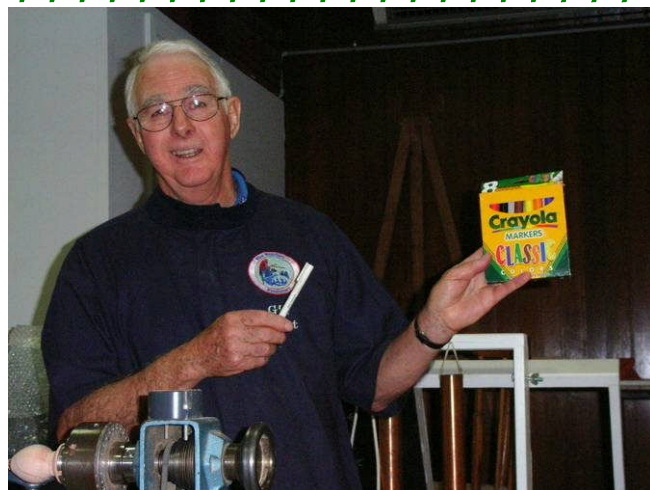
We were indeed fortunate to have Gil as our featured demonstrator this month. He is a member of the Blue Mountains Woodturners Inc. and grew up and lived in the country town of Griffith. Before retiring he bought a small lathe to give him a means of productively spending his time. He became interested in turning Christmas decorations and turned a lot from Banksia cones until he developed an allergic reaction to them and had to look for alternative timbers.



Gil gives variety to his pieces by using lamination of timbers and veneers, using the Dremel tool to engrave patterns, craft paint to add colour as well as ink drawings.

He is a good customer of the \$2 shops where he sources his coloured pins, sparkle, Christmas transfers etc.

Gil carves some of his pieces while others may be given the wire-brush treatment. All the items are fitted with a small loop of brass wire for hanging on the tree.



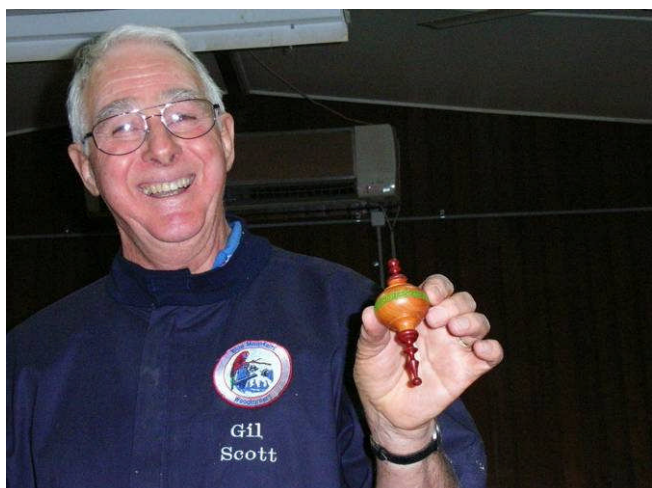
Gil advised on the best type of marker pens to use because the ink does not run on the timber.

He uses calligraphy pens rather than felt-tipped markers as they need to be water based to avoid running.

Jo Sonja's acrylic craft paints are his favourite for decorating, as well as glitter, stars, transfers and gold stripping.



The beauty of Gil's ink decorations on some of his work gives testimony to his skills in drawing and calligraphy as in this decorated bowl.





The tree decoration above with the bell shape is an example of what Gil calls "inside-out turning".

The technique involves gluing four square section lengths together, carefully numbering them, mounting on the lathe and turning a shape which is the "negative" of your desired shape.

In the example below, the pieces are turned so that the space between adjoining blocks reveals the desired Christmas tree.



The blocks are then separated and rearranged so that the turned sides are faced inwards, revealing the tree outline in the centre. Again the blocks are turned to give the finished shape and decorated as desired.



Going by the quiet attention and intelligent questions of our members, Gil's demo was greatly appreciated. His skill as a woodturner were obvious and I bet there aren't too many people who can swap the chisel from their right hand to the left and continue to turn just as easily. It sure helps to be ambidextrous.

Here's a candle holder to fit the neck of a bottle.



One of Gil's nicest pieces was a bowl which illustrates the poem "My Country" with the decorations depicting the sunburnt country, sweeping plains, ragged mountain ranges, droughts and flooding rains





Hare & Forbes Demo 9th – 12th November 2006

There is no doubt that Hare & Forbes certainly know how to hold a promotion sale and put on a great show for their customers. Besides all the demonstrations of woodwork and metalwork tools by the sales staff, there were many displays by various community groups featuring quarter scale racing cars, steam engines, model trains and of course woodturning.



There was a great display of timber slabs and furniture made from them as well as a presentation of a model replica Wright Brothers aeroplane

The show was very well attended as there was something to interest everyone. Northmead Scouts had one of the most popular stalls where you could get a free cuppa and free sausage and onion roll. There were seats where you could sit and eat your meal while listening to Darryl Smith giving a demo on the use of common workshop tools such as the bandsaw, jointer and planer/thicknesser.



With so many hobbyists in one place it was natural that you'd run into other club members and old

friends. You could also take the opportunity to examine other interests and talk to members on the stand.



The Western Sydney Woodturners' stand was well patronised by the many visitors and we hope that we may have attracted a new member or two.



Special thanks to Graham Dawes who organised our display and to Emmanuel Farugia, Larry Bailey, Toby McIlwain, Alan Phelps, Robert Young, Robert Taylor,

Wayne Hipwell, Ron Devine, Sid Churchward and Rohan McCardell for giving up their time and doing their bit towards promoting woodturning in the area and our club in particular.

Hare & Forbes had a professional video made of the show and you will find ours in the Library.

One popular stand was that of the Ornamental Turning Group of Australia where some of our members were keen to learn the methods of producing such attractive and seemingly complex turning.

It seems the secret is in the home-made Rose Engine as seen below and I expect a rush of fancy jobs in coming Show & Tell sessions, judging by the number of members studying the plans of the device

Now we know where Bill Swindail gets to every Wed.



Show and Tell 19th November 2006



Manny Farrugia
Segmented bowl
Various timbers
Friction Polish



Bill Moore
Bowl
Pine
Shellawax



Toby McIlwain
Fishing floats
Balsa
Polyurethane



Tony Maberly
Hardwood Vase and
Shallow Dish (Lebanese Cedar)
Linseed oil; Friction Polish



Bob Taylor
Vases
Olive wood
7008



Tony Maberly
Christmas tree
Pacific maple
Furniture polish



Sid Churchward
Bowl
Laminated timbers
Shellac & Friction Polish



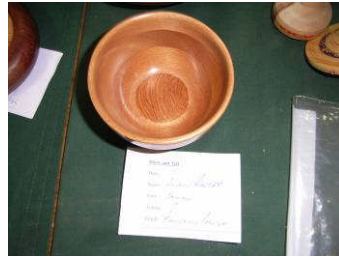
Neil Guthrie
Bowl
Red Gum burl
7008



Neil Guthrie
Platter
Red Gum burl
7008



Bob Taylor
Bowl
Camphor Laurel
7008



Alan Phelps
Bowl
Various laminated timbers
Friction Polish



Alan Phelps
Bowl
Kauri
Friction Polish



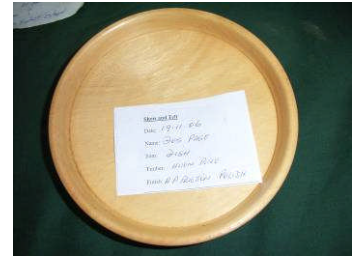
Toby McIlwain
Segmented Vase
Various timbers
Shellac & Friction Polish



Graham Murray
Lidded Box
Red Cedar & Cyprus
EEE & Friction Polish



Des Page
Bowls
Teak
AP Friction Polish



Des Page
Dish
Huon pine
AP Friction Polish



George Wells
Cake Stands
New Guinea Rosewood
Estapol



Bill Moore
Segmented Bowl
Unknown timbers
Shellawax



Allan Kirkland
Potpourri bowl
Pine
Estapol



Bob Taylor
Salt & Pepper grinders
Camphor Laurel
7008

Your Turn ... Rohan McCardell

As a recent joiner of the club (and very inexperienced turner) I am always impressed by the friendliness of the members and their willingness to make new chums feel welcome. Such a guy is Rohan McCardell, one of our most gregarious and active members. I'll let him tell his own story.



Completing my education to Intermediate Certificate I then commenced my apprenticeship as a Fitter & Machinist. While serving my time I won the National Service Lottery in 1969 and spent 3 months at Bardia Barracks at Ingleburn. On completion of my time at Ingleburn, I was then posted to a Transport Company in Ashfield. This gave me my introduction to Landrovers, which I still enjoy driving to this day. As the C.S.M. of my unit, I finished with the rank of W.O.2.

I had joined Qantas as a Flight Attendant in 1968 and this was the reason I had to seek my discharge from the C.M.F. The change of occupation really knocked my very square corners off, as world travel became within the reach of the man in the street.



In 1981 my Wife (Colleen) and I and our two children (Karen & Greg) were posted to London for 15 months which gave us time to see parts of Europe and lots of the U.K.

I saw a lot of

changes to aircraft in my thirty years of service to Qantas and I finally accepted a retirement package in 1998.

The Olympic Games in 2000 gave me an opportunity to participate as a driver. In the pre-Olympics I had to meet the Chef de Mission when they came out to check the Australian facilities. My security rating enabled me to meet them "airside" and escort them to immigration and customs. I also worked driving a 14 seater Mercedes Sprinter moving police, press, organizers, etc.



Once the Games started, I enjoyed myself as a kind of roving taxi driver and I scored a few highly prized badges too.

Later I began a casual job at the 'nut house' in North Parramatta, where I once engaged in conversation with a hairy old man by the name of Tony Maberly, and the rest — I am sure you will agree — is history. That fortuitous meeting led to my becoming a member of the Western Sydney Woodturners.

After enrolling in classes I became very impressed by the professional attitude and perseverance of all the instructors who took us under their wing.



We are indeed fortunate to have the degree of skills available to the members via the senior people in our club.



I enjoy my time here, and look forward to many more years of improving my skills at Lalor Park.

As well, I enjoy doing the catering, which gives me a chance to put something back into a club that provides me with so much enjoyment.

SOME MORE SPECIES OF WOODS

Zebrawood

(*Microberlinia brazzavillensis*)



Zebrawood is used in a limited way for veneer, wall panelling, custom furniture, furniture trim, inlay bandings, marquetry, specialty items and turnery. Because of its hardness, it can also be used for skis and tool handles. It is a decorative exotic wood, and as such has only a small following that even knows it exists, but those that do venture to use it, are awed by its dramatic colour banding.



Zebrawood is distinctive for its zebra like light and dark stripes. The term, "zebra-wood" is shared by several different woods with this particular appearance.

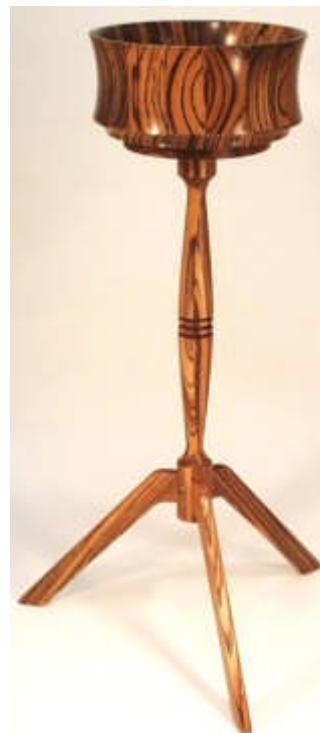
The most common species available are from West Africa. They are an equatorial tree of medium to large size, gregarious, commonly growing in pure strands along riverbanks. It can grow to heights of 150 feet with trunk diameters of 4 to 5 feet. When cut it gives off an unpleasant aroma which disappears as it dries.



It is a heavy hard wood with a somewhat coarse texture, with the typical so-called zebra stripes, often with an interlocked or wavy grain. The heartwood is a pale golden yellow, distinct from the very pale colour of the sapwood and features narrow streaks of dark brown to black.

Zebrawood can also be a pale brown with regular or irregular marks of dark brown in varying widths. It is almost always quartersawn to get the exciting alternating colour pattern and a straight grain.

It is a true exotic wood, with limited availability and relatively high prices.



Zebrawood can be difficult to finish because of the dual nature of the grain but finishes well once it's filled. The wood itself has a lustrous appearance.



It can be difficult to plane and does not seem to matter which direction it is feed into a planer, it tears out badly in either direction. Experts recommend the use of a belt sander as the only feasible way to get a good smooth finish. If you receive it pre-sanded, it is relatively easy to cut to size for all your woodworking projects.

With careful turning, you too can produce items to compare with the stunning examples shown.