

# WESTURN NEWS

Issue: 131

8th February 2011

## Western Sydney Woodturners Inc

Twin Gums Retreat, Corner Northcott Road and Diane Drive, Lalor Park

PO Box 4008, Lalor Park, NSW 2147

Web Site: [www.westernsydneywoodturners.com](http://www.westernsydneywoodturners.com)

Guild Web Site: [sydneywoodturners.com.au](http://sydneywoodturners.com.au)

**President:** Eddie Catford 9837 3311

**Vice-presidents:** Ken Vodden and Dan Austin

**Treasurer & Membership Secretary:** Robert Young

**Grants Officer:** Raymond Saich

**Secretary & Public Officer:** Wayne Hipwell

**Welfare Officer:** Graham Murray (0412 913 508)

If you know that any member or their partner is not well, give Graham a call and he'll organise a card to be sent.

**Catering Officer:** Brian Brooks

The lunches at the Maxidays are always well received by the members who appreciate Brian's high standards.

**Library:** Gary Hansell

**Stores, Equipment & Maintenance:**

Graham Dawes, Alan Phelps, Mannie Farrugia and Dave Matthews.

Please let them know if you find any problems with any of the machinery in the hall.

**Editor:** David Burns 98622732

[ziggyzer000@hotmail.com](mailto:ziggyzer000@hotmail.com)

## Western Sydney Woodturners Programme 2010

**Workshops:** Every **Monday** 8.30am—3.00pm \$5  
**Tuesday** from 8.30am, \$5  
**Wednesday** from 8.30am \$5  
**Thursday** from 8.30am, \$5  
**Friday Night** from 7.00pm. \$3

**Maxidays:** Third Sunday every month from 9.30am.

There is usually a demonstration by a guest turner then Show & Tell. Lunch is provided. Cost \$6.

**Club Meeting:** The club meeting is held on the second Tuesday of the month starting at 7.00pm at Twin Gums. All members are welcome to attend.

### Coming Events:

Tuesday 8th February Club Meeting  
Friday 18th - Sunday 20th February Newcastle  
Sunday 20th February Maxi Day  
Tuesday 8th March Club Meeting  
Thursday 10th - Sunday 13th March Craft Expo  
Sunday 13th March Linwood House

## Presidents Report

A BIG welcome back to all of our members and it is good that you are all fired up and ready to go as again this year is starting of similar to last year with a very full itinerary.

The Club Christmas party at the Blacktown RSL was again well represented by our members with a lot of favourable comments on the venue and the quality of the food and as usual it was all over too quick with everyone enjoying themselves.

Over the last few weeks there has been a lot of activity going on with the purchase of more machines to update our existing ones in preparation for the container which is coming along very well as the insulation, wall and roof panels have been installed as a means of cooling and a noise barrier. This has been carried out under difficult circumstances as the heat wave conditions didn't help when working inside, this effort has not gone unnoticed and a very sincere thank you to those who have worked so hard. You know who you and they are and for fear of forgetting someone under the circumstances I will not name you as you all have put in an extraordinary effort to be missed out and not to be appreciated would be an injustice.

Over the Christmas period negotiation continued with Blacktown Council culminating in them authorizing extensive work in laying concrete to the top driveway, a pad for the trailer, complete the pathway across the front of the building for wheelchair access and to top it off the most amazing drive way with a layback gutter. All of this has made such a difference in many ways and very much appreciated by everyone, to the Council and those concerned our appreciation can't be expressed adequately, but thank you.

As most of you are aware we were advised before Christmas we were successful in a grant application. This was confirmed again recently with a photo shoot with Nathan Rees who advised the money would be electronic transferred in the next couple of weeks. We

are anxiously waiting for it to come through so we can get on with the dust extraction system and purchase the new lathes we have been waiting so long for.

There has been a lot of negotiations with the Craft Expo people and at this stage they are very keen to have us at both Darling Harbour and Rose Hill, as these venues are big events they are draining on our resources so I guess we will be asking you to help out with making as many charity bowls as possible and closer to the date start collecting camphor shavings.

Our first demonstration was on Australia Day at Old Toongabbie where the Rotary Club held a Nationalization Ceremony and invited us to participate. This was a very early start but also finished early around 11.00am and according to all accounts not a bad day except for the heat and lack of water. All in all everyone enjoyed themselves and had reasonable sales.

At the last Maxi Day it was indicated we would be reintroducing the "Club Challenge" so for this month it is SEGMENTED work, I remind everyone this is not to take the place of "Show and Tell" but to be part of it and to get others to join in and expand on their abilities for greater comparisons in learning new techniques.

*"Become masters & turn master pieces"*

**Eddie Catford 9837 3311**

## The Concrete.

He pulled his hair out, he swore, he shouted, he rang, two weeks became two months, he actually almost gave up. Then he got a phone call, he got a spring in his footsteps, he became happy, might be a little whiter on the head but he became a much more pleasant man.

The man we are talking about is our man Eddie.

Without a word of a lie this man worked his balls off to get the concrete driveway we have today plus the trailer pad and the extension to the footpath around the club.

When the concreting was being done you could see the pleasure in the mans face, the relief that was the icing on the cake.

Eddie, I take my hat off to you, and the CLUB, Western Sydney Woodturners Inc. would like to thank you for a job well done. Thanks Mate.

Ken



### NEW MEMBERS

Welcome to all our new members this month. We hope your stay is both long and rewarding.

Charlie Spiteri	Shannon Lane
Doug Cox	Robin Campbell
Teddy Jones	Michael Bryce
Mitchell Kolomitz	Andy Tappouras
John Connaughton	Steve Cross
Roy Davi	

### SICK LIST

Frank Hicks	John Laugersen
Peter Ryan	

Get well soon, we miss your smiling faces!

### ITEMS FOR SALE

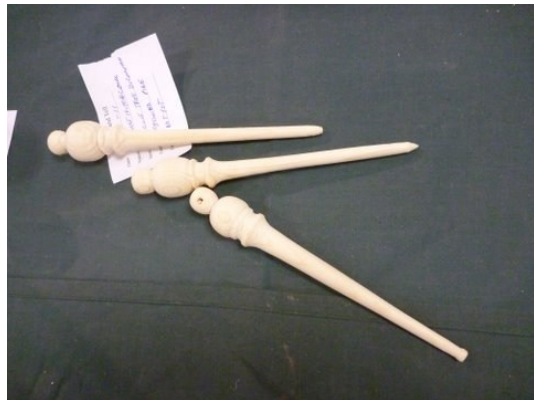
CLUB SHIRTS	BADGES
PEPPER GRINDERS	SALT GRINDERS
SAND PAPER	PEN KITS
PEN CASES	PEN PARTS
LETTER OPENERS	FRICTION POLISH
TRIPLE "P"	POLISH CLOTHS
TIMBER SEALER	PERFUME APPLICATOR
WOOD (many varieties)	

### HAPPY BIRTHDAY

Pam Allen	Dan Austin
John Connaughton	Fred DeJong
Mark Dunn	John Ekins
Andrew Heffernan	William Keary
Allan Kirkland	John Laugesen
Graham Murray	Sonia Omoruyi
John Sleeman	Russell Werner
Robert Crow	Graham Dawes
Manny Farrugia	Wayne Hipwell
Hans Loomans	David Malcolm
Shashikiran Rangaraj	Tony Simiana
John Talbot	George Wells

Happy birthday to all, we hope that you had a great day with many more to come.

Show & Tell 17th October.



Can you identify this man?

## Maxi Day 16th January

The day began with a talk by Anna Dawes about the use of Epoxy and how it could enhance the items members make at the Club.



Anna's talk was very comprehensive and covered every aspect of this material from safety to application. There was also detailed information regarding cost of materials and the various suppliers.

Throughout the talk Anna would offer different examples of her work to show us both the good elements of this material and the bad. She explained that mistakes are quite common and not to become discouraged!

Toward the end of the talk members were encouraged to 'have a go' and Ken Vodden was the first to mix a batch of Epoxy and pour it into a mould that had already been prepared. He then added some colour (the basic mix is essentially clear) and waited for his creation to cure.

Once this material has cured it can be easily turned and provides an astounding finish.

Members were very interested in every detail of the process and Anna, much to her credit, fielded a barrage of questions throughout the entire presentation.



This could be a great idea for anyone wanting to create that extra special gift!

David Burns

## Pole Lathe Demo



It was in Lithgow, at the Ironfest festival when I first saw Roy and his Pole Lathe. He then turned up at the club and became a member to learn the modern way of turning a piece of wood.

As it was back in Lithgow, Roy caught the attention of his audience, showing the way it was done way back when. I could not get over how fit this guy is, instead of going to the gym, to take up the old way of turning.

All joking aside, Roy knows a lot about wood turning, the traditional way it was done by the Bodgers in England and earlier.

He arrived at the club with his homemade lathe, assembled it in 15 mins together with a draw knife table and other tools, all he had made himself. Showing us all a craftsmen at work. Firstly, how a log was split, trued up with the draw knife and then onto the lathe. With the arrangement of ropes and treadle, he performed his task of turning, again with homemade chisels. Without the aid of sand paper, Roy got a pretty good finish. After about 2 hours, he had turned several parts of a chair, similar to the first chair he ever built using a pole lathe and other tools. He finished up with as many interested people at the end, as he had at the start which was very good at 3.30 on a Sunday.

Roy wishes to study the pole Lathe in greater depth, extending his skills to be able to turn bowls. This would be quite an achievement. Best of luck Roy and thank you for a great demo. Ken.

Phone: 02 4655 7295  
Mobile: 0418 221 554



**Frank Hicks**

Macarthur Woodturning Supplies



48 Engesta Avenue  
South Camden NSW 2570  
Email: frankhicks@bigpond.com  
ABN: 91 355 662 658

## You can't fool the wife!

Murphy staggered home very late after another evening with his drinking buddy, Paddy. He took off his shoes to avoid waking his wife, Kathleen.

He tiptoed as quietly as he could toward the stairs leading to their upstairs bedroom, but misjudged the bottom step. As he caught himself by grabbing the banister, his body swung around and he landed heavily on his rump. A whiskey bottle in each back pocket broke and made the landing especially painful.

Managing not to yell, Murphy sprung up, pulled down his pants, and looked in the hall mirror to see that his butt cheeks were cut and bleeding. He managed to quietly find a full box of Band-Aids and began putting a Band-Aid as best he could on each place he saw blood.

He then hid the now almost empty Band-Aid box and shuffled and stumbled his way to bed.

In the morning, Murphy woke up with searing pain in both his head and butt and Kathleen staring at him from across the room.

She said, "You were drunk again last night weren't you?"

Murphy said, "Why you say such a mean thing?"

"Well," Kathleen said, "it could be the open front door, it could be the broken glass at the bottom of the stairs, it could be the drops of blood trailing through the house, it could be your bloodshot eyes, but mostly ..... it's all those Band-Aids stuck on the hall mirror."

## Ho Hum!

These men are installing bollards to stop cars parking on the pavement outside an Irish sports bar. They are cleaning up at the end of the day. How long do you think it will be before they realize?



**SELECT**  
*SERVICE THAT MOVES YOU*

**Your Local Tyre Expert**  
**Offering Quality, Value for Money**  
**and Peace of Mind**

- All Mechanical Repairs •
- Major and Minor Repairs •  
including log book
- Electronic Wheel Balancing •
- Wheel Alignments •

 **9622 2599**   
[www.bridgestoneselect.com.au](http://www.bridgestoneselect.com.au) 

 When you show your NRMA card only on Bridgestone or Firestone products  
\* Conditions Apply

**BLACKTOWN**  
**TYRE SERVICE**  
17/47 Third Ave, Blacktown



### A REMINDER ABOUT SHOP SAFETY

*We must all keep in mind the importance of SHOP SAFETY. Please THINK and ACT responsibly at all times.*

*It is up to all of us to fulfil our commitment by wearing at all times:*

- DUST MASKS,
- PROTECTIVE GLASSES,
- SUITABLE CLOTHING,
- FOOTWARE ETC.
- EAR PROTECTION

*IT DOES NOT HURT TO DISCUSS SAFETY WITH OTHER MEMBERS IF THEY ARE NOT DOING THE RIGHT THING.*

**REMEMBER.**

**IT IS YOUR BODY AND YOUR LIMBS.....**

There was timber all around me  
Lots of burls and big round blanks  
Red mahogany and Huon pine galore  
Blackheart sassafras aplenty  
River Redgum every where  
And Gidgee wood and Mulga by the score

But there was no one there to serve me  
There was not a soul in sight  
I thought surely they would come back very soon  
So I picked out some nice pieces  
They were priced and not too dear  
To get this stuff so cheap was quite a boon

I saw some lovely Blackwood  
And some Beech and Myrtle too  
So I loaded it all up and kept a list  
I would show the detail to them  
When they finally arrived  
And I looked around to see what I had missed

If they didn't turn up soon  
I would take the stuff and go  
I had made my list if someone wants to know  
And if no one said a word  
They had themselves to blame  
I made my mind up then that I would go

Then someone shook my shoulder  
And I looked and saw my wife  
Now I wondered what could she be doing here  
And where was all the timber  
All the lovely Huon Pine  
I closed my eyes and hoped my head would clear

But I wasn't in my van  
And I wasn't pinching stuff  
I'd been dreaming of a paradise of wood  
What a strange and haunting feeling  
What relief it wasn't real  
To know that I was not up to no good

Neil Guthrie

### Safety Tip

Safety glasses or goggles should be worn whenever power tools are in use and when chiseling, sanding, scraping or hammering overhead. This is very important for anyone wearing contact lenses.



**PARKLEA SAND & SOIL**

86 Hambledon Road,  
Schofields 2762      Ph: 9626 9549  
Fax: 9837 2206

- Garden Soil
- Fertilisers
- Pinebark
- Turf
- Woodchip
- Weed Mat
- Decorative Pebbles
- Manures

Sand •      Sleepers •  
Cement •      Pine Logs •  
Blue Metals •      Builders Supplies •

**OPEN 6 DAYS**  
[www.parkleasantsoil.com.au](http://www.parkleasantsoil.com.au)

The New Year is upon us, oh how time travels so fast, and I need your assistance.

I am continually trying to improve the Newsletter so that everyone has an enjoyable read but there are always areas for improvement. I need your ideas, suggestions, articles, even a simple comment can be very useful, so please contact me at the Club or send it to ...

[ziggyzer000@hotmail.com](mailto:ziggyzer000@hotmail.com)

Our Newsletter is good but I am certain that together, we can make it great!

Editor

## Breaking News

For all those members who own faulty GMC products there is good news.

Ghebrial Tools has a substantial range of parts to suit most GMC devices. They are not an official service centre but are still able to assist.

Contact them on 03 9357 6168.

Over 100 species  
Select timber for  
Cabinetmaking  
Furniture  
Joinery  
Woodturning  
Carving

## TREND TIMBERS

15 Railway Road North, Mulgrave NSW 2756  
TELEPHONE: 02 4577 5277 FAX: 02 4577 6846

Email: [sales@trendtimbers.com.au](mailto:sales@trendtimbers.com.au)

[www.trendtimbers.com.au](http://www.trendtimbers.com.au)

Opening Hours  
ALL WELCOME!!

Mon-Fri 8am-4pm  
Sat 8am-11.30am

Closed

Public Holidays &  
Long Weekends

# Working With Timber Made Easy

## B-18V SCROLL SAW

- 120W 240V motor
- Variable speed (550 - 1700rpm)
- 460mm Throat capacity
- Ideal for wood, metal or plastic
- Cast iron table tilts 45° to the left and 8° to the right
- Accepts straight or pinned blades
- Includes air blower, flexible work light
- 35mm dust collector port
- Dimensions (LxWxH) 69 x 32 x 50cm



**\$219** (W352)

## AP-12 AIR FILTRATION UNIT

- 1044CFM capacity
- Remote control ON/OFF
- 3 speed settings
- 3 timer settings (1Hr, 2Hr, 4Hr)
- Easy filter element maintenance
- Designed for ceiling mount
- Can remove most airborne contaminants and maintain fresh air circulation



**\$349** (W326)

## DC-1 DUST COLLECTOR

- 2.25kW (3HP) 240V motor
- 2300CFM
- 100mm(4") x triple inlets
- Portable on wheels
- Quick action clamps on collection & filter bags
- 5 micron fine filter bag
- Ideal for multiple extraction applications

**+ FREE DUST HOSE**  
2 Metres (W398)



**\$495** (W329)

## BP-355 BAND SAW

- 1500W / 2hp 240V motor
- 345mm throat capacity
- 245mm height capacity
- Safety magnetic switch with emergency stop
- Blade guards with safety micro-switches
- Heavy duty steel fabricated frame
- Ball bearing blade guides
- 2 x blade speeds via pulley system
- Quick-release blade tension mechanism
- Cast iron table tilts to 45°
- 100mm dust outlet



**\$739** (W4224)

## PT-161 JOINTER

- 150mm width capacity
- 0.75kW / 1hp 240V motor
- Rigid quick action tilting fence to 45° with adjustable stops
- 1175mm cast iron table with 13mm rebating
- Enclosed stand with 100mm dust chute
- Magnetic safety switch
- 3 blade cutter head
- Spring loaded blade guard



**\$529** (W622)

## DS-13 DRUM SANDER

- 330mm sanding width capacity
- Rigid design and construction
- 100mm dust outlets
- Variable speed conveyor feed
- Easy and convenient belt tracking system
- Safety magnetic switch with raised emergency stop button
- Dynamically balanced sanding drums ensure smooth running
- 1.12kW / 1.5hp Induction 240V motor



**\$880** (L1105)

## L-612 BELT & DISC LINISHER SANDER

- Takes 150mm x 1220mm belt
- Ø305mm sanding disc
- Cast iron tilting tables to belt & disc
- Heavy duty 1.5kW / 2hp 240V
- Can use linisher in vertical or horizontal position
- Heavy duty quick action belt release
- 100mm dust collector port, 80mm port for disc
- Includes graphite pad and stand



**\$899** (L108)

## TS250RS PANEL SAW

- 254mm diameter saw blade with 45° tilting arbour
- Aluminium sliding work table with 1250mm travel
- 80mm @ 90°, 54mm @ 45° depth of cut
- Fence includes adjustable flip over stop
- 1.5kW / 2hp 240V motor
- 800 x 620mm work table
- 600mm ripping capacity
- Aluminium extrusion rip fence
- 100mm & 30mm dust extraction outlets



**\$1,419** (W688)

**Woodfast**

**HARE & FORBES**  
**MACHINERYHOUSE**

[www.machineryhouse.com.au](http://www.machineryhouse.com.au)

Sydney: Northmead Ph: (02) 9890 9111

Brisbane: Coopers Plains Ph: (07) 3274 4222

Melbourne: Dandenong Ph: (03) 9212 4422

Perth: Belmont Ph: (08) 9373 9999

Specifications & Prices are subject to change without notification. All prices include G.S.T. and valid until 28-02-11

L\_WTN\_February\_11

# IT'S CRAFT TIME 2011

your craft events calender

## special events



Australasian Quilt Convention (AQC)  
 April 14 - April 17  
 Royal Exhibition Building  
 Carlton Gardens, Melbourne  
[aqc.com.au](http://aqc.com.au)



Scrapbook & Papercraft  
 Expo & Convention  
 June 11 - 13  
 Brisbane Exhibition Centre, South Bank  
[scrapbookexpo.com.au](http://scrapbookexpo.com.au)



Textile Art Festival  
 June 11 - 13  
 Brisbane Exhibition Centre, South Bank  
[textileart.com.au](http://textileart.com.au)



Tasmania · April 29 - May 1  
 Launceston Silverdome

Perth · May 18 - 22  
 Perth Convention Exhibition Centre

Sydney · June 22 - 26  
 Sydney Exhibition Centre,  
 Darling Harbour

Melbourne · July 28 - 31  
 Melbourne Exhibition Centre, Southbank

Canberra · August 11 - 14  
 Exhibition Park In Canberra

Hamilton, New Zealand  
 September 8 - 11  
 Claudelands Events Centre, Hamilton

Christchurch, New Zealand  
 September 16 - 18  
 CBS Canterbury Arena, Christchurch

Brisbane · October 19 - 23  
 Brisbane Exhibition Centre, South Bank

Adelaide · November 3 - 6  
 Adelaide Event & Exhibition Centre,  
 Showground, Wayville

[craftfair.com.au](http://craftfair.com.au)



your ultimate craft marketplace

Sydney · March 10 - 13  
 Rosehill Gardens Racecourse, Sydney

Auckland, New Zealand · March 17 - 20  
 ASB Showgrounds

Brisbane · March 24 - 27  
 Brisbane Exhibition Centre, South Bank

Townsville · July 14 - 17  
 Townsville Entertainment  
 & Convention Centre

Newcastle · August 18 - 21  
 Newcastle Entertainment Centre

Melbourne · October 6 - 9  
 Royal Exhibition Building, Carlton Gardens

[craftexpo.net.au](http://craftexpo.net.au)



EXPERTISE EVENTS  
 Events with a personal touch

Unit 4/1 Skyline Place, Frenchs Forest  
 NSW 2086, Australia  
 t +61 2 9452 7575 · f +61 2 9975 3707  
 e [info@expertiseevents.com.au](mailto:info@expertiseevents.com.au)  
[www.expertiseevents.com.au](http://www.expertiseevents.com.au)