

WestTurn News

Guild Web Site:

<http://www.sydneymwoodturners.com.au>

Issue 117 13th October 2009.

Western Sydney Woodturners

Postal Address: PO Box 4008, Lalor Park, NSW 2147

Twin Gums Retreat Address: Cnr Northcott Rd & Diane Dr, Lalor Park

President [Eddie Catford](#) 9837 3311

Vice-president [Emanuel Farrugia](#)

Treasurer & Membership Secretary [Robert Young](#)

Secretary & Public Officer [Wayne Hipwell](#)

Welfare Officer: [Graham Murray](#) (0412 913 508)

If you know that any member or their partner is not well, give Graham a call and he'll organise a card to be sent..

Catering Officer: [Brian Brooks](#)

The lunches at the Maxidays are always well received by the members who appreciate Brian's high standards.

Library: See [Gary Hansell](#) if you would like to know what is currently available from our library.

Stores, Equipment & Maintenance:

[Graham Dawes](#), [Alan Phelps](#), [Mannie Farrugia](#) and [Dave Matthews](#).

Please let them know if you find any problems with any of the machinery in the hall.

Editor: [Bill Hartley](#) 98716128
williamhartley@optusnet.com.au

President's Message:

As indicated this month was a full house being very busy with activities including two demonstrations to Wisteria House and Lynnwood House, St Marys street festival, Pyrography classes, Maxi Day with show and tell along with the competition. I must at the outset say thank you to all those who helped by participating in all of the activities and functions, making each one of them a success.

Wisteria and Lynnwood Houses depleted our stock of charity bowls with the response we received and we are now desperately asking you to start rebuilding our supply for the upcoming events so please "HELP" as much as possible.

St Marys as always is a good venue with a real atmosphere, plenty of people, lots of enquiries and a new member coming from there as well

The Pyrography class was very successful with nothing but the highest of praises as the attached report verifies.

The Maxi Day again was very informative particularly by showing how it is very easy to make your own tools from what you have in your workshop. With very little cost, you can build a tool, such as the indexing plate which will do the job as well if not better than a bought one.

Kay was very professional in the way she demonstrated and we thank her for that along with the help in doing the Show and Tell which was limited to only a few items this time due to the number of items we had in the competition. Thank you, Kay. The pieces that were displayed for judging were nothing short of amazing. It shows we have some very innovative minds in the club. The standard and quality of workmanship was above expectation considering the poor quality wood to work with. They must have demanded extra effort to produce a quality finish worthy of display.

It was very pleasing to see the new turners having a go and putting their work up for consideration. To you members, keep up the good work. It is pleasing to see the progress you are making and this gives us all a great sense of achievement.

Unfortunately, we have some members on the sick list this month. Graham Dawes is in hospital at Westmead Rehab after experiencing back problems, Bob Hodge (Santa) is recovering in hospital after having a knee operation, and Graham Murray who has had a stay in hospital. We wish all of you a speedy recovery.

Finally, a reminder about Shop Safety.

Protect yourself while working on all the machines.

It is in your interest to maintain safety procedures and use whatever equipment such as push-sticks, safety glasses, dust masks etc designed to protect you from injury.

**Your health is important.
Think and act responsibly.**

Eddie Catford 9837 3311

Western Sydney Woodturners Programme 2009

Workshops: Every **Tuesday** from 8.30am, \$5
Wednesday from 8.30am \$5
Thursday from 8.30am, \$5
Friday Night from 7.00pm. \$3

Maxidays: Third Sunday every month from 9.30am
There is usually a demonstration by a guest turner then Show & Tell. Lunch is provided. Cost \$6.

Committee Meeting: The committee meeting is held on the **second Tuesday of the month** starting at 7.00pm at Twin Gums. All are welcome to attend.

Coming Events:

October 18th Maxiday Bill Shean & John Harris
Hollowing

October 24th Ladies Day

November 8th Lynnwood House

November 15th Maxiday Bob Hodge & Graham Dawes

November 28th Ladies Day

December 13th Christmas Party at Seven-Hills/Toongabbie RSL club



For those wondering where our Editor got to last week...

St Mary's Spring Festival — by Bob Jarvis

Members attending this community demonstration included Eddie Catford, Rohan McCardell, Manny Farrugia and Bob Jarvis. We started early and set up the stall at 7:30 and we were in operation by 8:00 am.



Business was a bit slow till about 10:30 when things got busy and we found that we had to go flat chat making tops to keep the many local kids happy.



The charity bowls also went like hot cakes as did the containers of camphor laurel shavings which people buy for keeping insects like silverfish under control. On this day we raised \$279 towards our club charity.



September Competition



The picture shows the winner John Malyasiak and the runner-up Allan Phelps holding their entries standing with our competition judges Graham Murray, new member Alan Curtin and Anna Dawes

The only requirement in this competition was that the item submitted had to be made from the offcut timber which the Club provides for making charity bowls.



Allan Phelps
Pacific Maple Platter
Stained, filled, Satin Estapol



Allan Phelps
Pacific Maple Platter
Stained, filled, Satin Estapol



Allan Phelps
Radiata Pine Platter
Stained, Sprayed Satin Estapol



Allan Phelps
Pacific Maple Vases
Stained, filled, Sprayed Satin Estapol



Allan Phelps
Pacific Maple Platter
Stained, filled, Satin Estapol



Raymond Saich
Segmented Shape
Pacific maple



Raymond Saich
Segmented Vase
Pacific maple



Lawrence Mifsud
Square base Vase
Pacific maple

On the Internet

Put the address below in your browser and take a look at the new website. When completed it will give easy access to all club information with links to past newsletters, our advertisers and related items.

Congratulations to Joanne Farrugia for doing such a magnificent job with the site. Like every job she does for the club, it is first class!

www.westernsydneywoodturners.com

Phone: 02 4655 7295
Mobile: 0418 221 554



Frank Hicks

Macarthur Woodturning Supplies



48 Engesta Avenue
South Camden NSW 2570
Email: frankhicks@bigpond.com
ABN: 91 355 662 658

Show & Tell 20th September



Brian Brooks
Pyrograph Rooster
Burned onto Hoop Pine



Ken Vodden
Segmented plate
Jarrah, Fiji Cedar



Ken Vodden
Segmented plate
Jarrah, Silver Ash, Wenge



Alan Eipper
Bottle & Glass Coasters



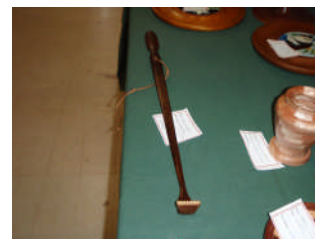
Ken Vodden
Segmented bowl



Ken Vodden
Segmented bowl



Alan Eipper
Sewing kit



Huns Loomans
Shoehorn/Back Scratcher
Wenge & Gidgee



Alan Eipper
Lidded Box



Huns Loomans
Lidded Urn
Maple



Dom Vaticano
Vase
Maple



Darryl Lane
Match Dispenser



Raymond Saich
Segmented Shape
Maple




Lawrence Mifsud
Winged Box
Maple



Lawrence Mifsud
Tower
Maple



Raymond Saich
Segmented Bowl
Maple



Trend Timbers
SPECIALISTS IN AUSTRALIAN & EXOTIC TIMBERS

WOOD TURNING; WOOD CARVING;
PYROGRAPHY; TIMBER FINISHES;
TURNING & CARVING TOOLS

4577 5277

Lot 1 Cunneen St,
Mulgrave/McGraths Hill

www.trendtimbers.com.au

Maxiday 20th September — Kaye Paton

We were very pleased to have Kaye Paton as our featured demonstrator this time to explain the finer points of indexing.



Some modern lathes have the indexing facility built in, where the head stock can be locked in various positions so that the job can be worked on with various tools before it is rotated to the next position.

Kaye's was an ordinary lathe, so she made her own indexing plate out of a piece of Perspex with evenly spaced holes drilled around a marked radius, with a centre



hole the same size as the shaft thread. This allows the indexing plate to be firmly held in place by the chuck. A sliding bolt had been strategically mounted to lock the indexing plate in any position around the rotation to allow drilling our routing to be done.

Kaye used her indexing system to make the castle section of a chess piece. Her club, the Blue Mountains Woodturners make a complete chess set annually and donate it to the local High School.

After lunch, Kaye did the honours by conducting the monthly Show & Tell for members.



MUMBLINGS OF A GRUMPY OLD MAN

Well we have been treated to another hysterical circus. Michael Jackson died and you would have thought it was the greatest news story since Noah launched the Ark!

Had Jesus returned it would have been reported on page 5 of the dailies missing the TV news altogether.

Why do the media bombard us with these stories day after day as though our lives are somehow dramatically affected? Certainly we lost a great talent, but a mediocre person, not a great man. Perhaps if he had spent only a fraction of his money on the pursuit of developing his character and understanding and acceptance of himself instead of freakish plastic surgery, he may have become a great man.

But then he is symbolic of modern generations. Don't be content with what and who you are! Image is what is important! Plastic surgery, Botox, tattoos, body piercings, youth! These are the important things! In the days of reality TV, reality in life MUST be avoided!

A word of advice to those who pursue the Image rather than Life. Age is a badge of courage to be worn with pride and honour. Botox and its vanity partners are the white feathers of cowardice to be worn with shame.

Learn from the Jacksons and Hutchins and many of like kind who went before them. Inner beauty and being true to self is the only goal that fulfils and satisfies.

One last thought. When Michael Jackson was finally milky white, he released his hit "It doesn't matter if you're black or white". He forgot to add the line "now that I am white"

Grumblebum

MID-LIFE CRISIS

After being married for 44 years I took a careful look at my wife one day and said, "Forty-six years ago we had a cheap apartment, a cheap car, slept on a sofa bed and watched a 10 inch black and white TV, but I got to sleep with a sexy 25 year old woman.

Now I have a £1,500,000 home, a £45,000.00 car, a nice big bed, and a plasma big screen TV, but I'm sleeping with a 69 year old woman. It seems to me that you're not holding up your side of things."

My wife is a very reasonable woman. She told me to go out and find a sexy 25 year old woman and she would make sure that I would once again be living in a cheap apartment, driving a cheap car, sleeping on a sofa bed, and watching a 10 inch black and white TV.

Aren't older woman great? They really know how to solve your mid-life crisis.

The One Day Pyrography Course with Carolyn McCully

On Saturday 19th September last, four of our members, Bob Taylor, Brian Brooks, Bob Young and Neil Guthrie, took part in a one day Pyrography Course conducted by Carolyn McCully. The course was held in our clubhouse and ran from 9.30am to 4.30pm.

Carolyn is an exceptional teacher and because she only has four in a class everyone gets one on one attention. The course cost \$60-00 and included in that was a full kit consisting of two of her books on the subject, two pieces of Hoop Pine plywood to work on, several patterns to use as subjects to burn, paper, carbon paper, pencil, pen, pencil sharpener, and sticky tape.

Carolyn uses several different colour mediums and we were lucky enough to be instructed in the use of these. Each of us had our own burner and water colour pencils so the morning started with the exercise of using the different burning nibs. Then we each chose a pattern to burn and proceeded to trace it onto one of the pieces of ply. During this time Carolyn was offering advice and tips on how to get the best result. I chose to burn a magnolia blossom and the others chose a dragon. It was good to have such an experienced and talented artist there to guide us and answer questions.

After lunch we attempted to use the colours to achieve a more interesting finished picture. For myself I need a lot more practice both in burning and the use of colour but we were all very pleased with what we had achieved and what we had learned. Carolyn is prepared to do more classes but says she might need to increase the cost a bit. I thoroughly recommend the course to anyone interested in learning pyrography.

Neil Guthrie



THE MUSIC I GREW UP WITH
by Neil Guthrie



I grew up in the forties
In a large and happy home
With five much older siblings hot to trot
So the music that I listened to
Was mostly forties swing

Glen Miller, Arty Shaw and they were hot



Tommy Dorsey and his band
And also brother Jim
And Freddy Gardner's saxo-
phone was grand
There was Harry James on
trumpet
Gene Krupa on the drums

A part of Benny Goodman's mighty band

Bunny Berrigan on trumpet
Could reach the highest note
And Lionel Hampton's xylo was
the best
He worked with Billie Holiday
Dina Washington as well
And far too many now to name the
rest



In the Spring of '37
The year that I was born
George Gershwin died and left a
mighty hole
His music lives forever
"Summer Time" to name just one
But Brother Ira struggled with his role



Duke Ellington is mentioned here
The greatest of them all
His orchestra continued when he'd
gone
His manner and charisma
Won every body's heart
His music will go on and on and on

This was a golden era
For vocalists as well
And Crosby will be first to come to
mind
Sinatra made the ladies faint
My Mum was hooked on Bing
But Nat King Cole is favourite
choice of mine



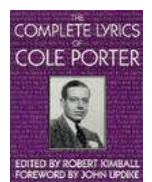
Lena Horne was slinky smooth
Ella Fitz was tops in Jazz
Sarah Vaughn sang Body and
Soul to melt your heart
They paved the way for Negroes
And suffered all the jibes
They put up with a lot to get a
start

The forties ran to fifties
Music hit the movie screen
And musicals could sooth a day
of strife
Bing and Frank got into it
And Fred and Ginger too
Al Jolson sang the story of his life



Lerner and Lowe were gifted
With words and music too
The score for "Oklahoma" says it all
"Camelot" and "My Fair Lady"
Lifted us to greater heights
Composers took the hint and heard
the call

One name I have to mention
Revered throughout the world
In music's world none greater will be seen
He wrote my favourite ballad
Both words and music too
Cole Porter wrote; let them; "Begin the Beguine"



Hoagy Carmichael's "Stardust"
Is a standard to this day
Another one from him is "Body and
Soul"
The talents of these people
Entraps the heart and mind
Their music is a force you can't control

In wartime we were lifted
By songs to cheer us up
Vera Lynn and Gracie Fields did that
so well
And there were lots of others
Who sang patriotic songs
But far too many here for me to tell



"Setting the standard for quality & value"

- ✓ Bandsaws
- ✓ Drills
- ✓ Toolboxes
- ✓ Woodlathes
- ✓ Dust Collectors
- ✓ Panel Saws
- ✓ Compressors
- ✓ Accessories
- ✓ Vices
- ✓ Jointers
- ✓ Thicknessers
- ✓ Vacuum Cleaners
- ✓ Nail Guns
- ✓ Linishers
- ✓ Scrollsaws
- ✓ Mortisers
- ✓ Table Saws
- ✓ Disc Sanders

DS-13 DRUM SANDER

- 330mm sanding width capacity
- 100mm dust outlets
- Variable speed conveyor feed
- Min/Max work piece (6 - 100mm)
- Easy and convenient belt tracking system
- Industrial contactor switch with overload protection
- Dynamically balanced sanding drums ensure smooth running
- 1.12kW / 1.5hp Induction 240V motor



SAVE \$166

\$1,099
(L1105)

hms 2600ci PLANER THICKNESSER

- Heavy duty machines CAST IRON tables (easily and accurately adj.)
- Unique vulcanized rubber feed system on the thickness mode
- 250 x 210mm thickness cap.
- 100mm dust collector port
- 3mm stock removal
- Powerful 3HP motor for constant feed in both hard and soft timbers
- Cast Iron thickness table adjustment to 1/10mm for super fine finishing
- Large professional planing fence
- 3hp, 240V motor



SAVE \$155

\$1,495
(W850)

SP-300 SPINDLE MOULDER

- Rise and fall adjustment and spindle lock for easy cutter change
- 4 spindle speeds with FWD/REV 1800, 3000, 6000, 9000rpm
- Includes sliding table with mitre, micro adjustment aluminum fence and top clamp • Large ground, cast iron worktable (710 x 640mm)
- Tilting arbor to 30° for various profiles
- Cast iron cutter guard with 4" dust port
- 100mm dust collector port
- 900mm table height
- 2250W 15Amp 240V motor
- 90mm spindle travel
- 200mm spindle size
- 30mm spindle



SAVE \$179

\$1,900
(W640)

ST-1265 PANEL SAW

- 2.1kW 240V brake motor with 4000rpm blade speed
- 254mm diameter saw blade has 45° tilting arbor
- 1265mm cross cut capacity with sliding table
- Durable extruded aluminium slide, table is 1655 x 248mm wide
- Dust extraction from top, 100mm chute from the enclosed stand
- Cast iron main table 800 x 348mm (with extensions 800 x 670mm)
- Mitre guide with clamp, allowing mitre cutting at 60° right & left
- 100mm dust collector port
- Includes heavy duty rip fence
- Magnetic switch



SAVE \$200

\$2,099
(W460)

Prices and Specifications are subject to change without notification. Prices valid until 30st November 2009. (*WA prices may be higher due to freight costs) All Prices include G.S.T.

Sydney
(02) 9890 9111

Brisbane
(07) 3274 4222

Melbourne
(03) 9212 4422

Perth Flora Machinery Sales
(08) 9356 1811

www.machineryhouse.com.au