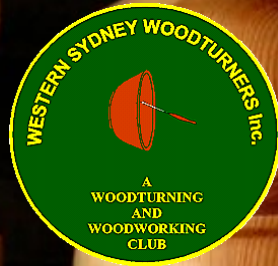


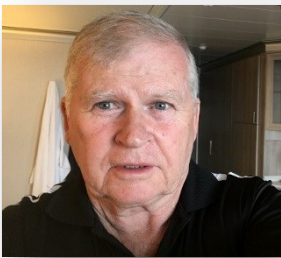
# WesTurn News

The official organ of Western Sydney Woodturners Inc.

Issue: 261



March 2023



**Western Sydney Woodturners Inc**

**Twin Gums Retreat, Corner Northcott Road and Diane Drive**

**PO Box 4008, Lalor Park NSW 2147**

**Web Site: [www.westernsydneywoodturners.com.au](http://www.westernsydneywoodturners.com.au)**

This month I want to highlight a problem that has plagued the Club for many years and that is, the cleanliness of our shared work space. It doesn't take long to clean up the space you have chosen to do your work and if the space next to you is vacant it doesn't take much to clean that as well if you see that it needs it. None of us should expect others to do what we should do ourselves but that is what's happening. Many times, tool boxes are left unlocked and mats, which it was decided at a monthly meeting many years ago, should be used to stand on when turning, are being stacked on top of each other and piled up in the demonstration area. This has to stop for the benefit of all and if you see a new member not following these rules please ask them to comply.

The new Thicknesser, which was obtained through Blacktown Council Community Grants Scheme, should have arrived by the time you are reading this. The old Thicknesser was well and truly beyond its use by date and thanks to this timely grant we were able to replace it with a very upmarket product which will serve the Club for many years. The new sanding machine is already being used and it's also doing an excellent job.

There is no Maxi Day this month as the Blue Mountains Mini Symposium is on and as many of our members wanted to attend this event it was decided that, as the date was the same as our Maxi Day, it was more beneficial to attend this event. Some of the demonstrators on the day will be ... George Hatfield, Mike Darlow, Ernie Newman, Lindsay Skinner, Brendon Venner, Simon Begg, Catherine Gorie, Jan Palmowski a very impressive line up and I'm sure, by attending this event, everyone who attends will come away enriched by the experience.

Next month's Maxi Day will also be a presentation day where I will be presenting three of our members, who have been members for in excess of 25 years, with a plaque honouring their long service to our Club. You are invited to attend and on this occasion there will be no charge for lunch. So please come along on Sunday 23rd of April and enjoy the Maxi Day presentation and then stay and have lunch and help celebrate our members achievement.

Until I next see you at the club, stay safe and stay well ... Les Coombes ... (President)

# SAFETY MATTERS

## A REMINDER ABOUT WORKSHOP SAFETY

We must all keep in mind the importance of WORKSHOP SAFETY. Please THINK and ACT responsibly at all times. It is up to all of us to fulfill our commitment by wearing at all times;

- ◇ Dust masks
- ◇ Protective glasses
- ◇ Suitable clothing
- ◇ Footwear
- ◇ Ear protection

It does not hurt to discuss safety with other members if they are not doing the right thing.

## ARTICLES FOR NEWSLETTER

Could I please ask those members who attend our demonstrations, maxi-days etc; if you could take some photographs and a brief description of the event so these can be published in the newsletter I am sure all members would be interested in reading about the events of the day. Thank you.....Editor.



## CUT OFF DATE FOR ARTICLES

Please note the cut off date for articles to be included in the Newsletter is the last day of the month. All members are welcome to submit articles for inclusion.

Please send them to the editor;

Email address: [augoodtime@hotmail.com](mailto:augoodtime@hotmail.com)

## Club Committee

**President:** Les Coombes  
(0408760131)

**Vice Presidents:** Shane Catford and  
Paul Collins

**Secretary:** Jen Coombes

**Treasurer:** Eddie Catford

**Public Officer & Grants Officer:**  
Sandra Ongley

sandraongley21@gmail.com

**Catering Officer:** Ian Frith

**Librarian:** Rod Brown

**Editor:** Robert Ryan

augoodtime@hotmail.com

**Webmaster:** Lindsay McEwan

lcmcewan@optusnet.com.au

**Training Co-Ordinator:** Greg Sheath

**Trainers:** Graham Dawes (JP), Rod  
Brown, Ron Devine, Greg Sheath, Rob  
Stewart, George Manou, Bob Taylor &  
Bob Young.

**Shop Managers:**

Eddie Catford and Les Coombes

**Stores, Equipment & Maintenance:**

Manny Farrugia, Dave Matthews,

Graham Dawes (JP), Bob Young, Ron  
Devine & Glenn Freeman.

**Welfare & Membership Officer:**

Branka Hedges

[brankahedges@aol.com](mailto:brankahedges@aol.com)

**If you have any suggestions or  
information concerning the club  
please contact any of the  
above committee members.**

## Club Hours

**Mon-Thurs:** 8:30am – 4pm....\$5

**Friday Nights:** 5pm – 9pm....\$3

### Saturday Turning

**Ladies Day:** 2<sup>nd</sup> Saturday...\$5

**Contact:** Anna Dawes

9638 6995

tandawes@optusnet.com.au

### 4th Saturday of Month

8.30am – 4.00pm...\$5

**Contact:** Les Coombes

0404 001 562

### Maxi Day – 3<sup>rd</sup> Sunday

10:30am – 2:00pm...\$6

(Lunch included)

## Club Meetings

**Second Tuesday of  
the month — 7pm**

### Shop items

- ⇒ Ozzie Grit
- ⇒ Friction Polish
- ⇒ Sanding Sealer
- ⇒ Sandpaper
- ⇒ Club Shirts
- ⇒ Dust Jackets
- ⇒ Club Badges
- ⇒ Pen Kits
- ⇒ Pen Blanks – Acrylics
- ⇒ Lazy Susan Bearings
- ⇒ Cheese Knives
- ⇒ Salt Mills
- ⇒ Pepper Mills

**Many more items also  
available**



**A very big thank you to  
Michelle Rowland MP,  
the Member for  
Greenway,  
for her continued  
support which  
includes the printing  
of this newsletter.**

Take a look at our \*\*\* **NEW** \*\*\* website .....

[www.westernsydneywoodturners.com.au](http://www.westernsydneywoodturners.com.au)

Please feel free to leave a comment ...



# BLUE MOUNTAINS WOODTURNERS MINI SYMPOSIUM

Eight of Australia's best will demonstrate traditional tool techniques, classical forms, and creative design.

[BMW Mini Symp 2023.pdf](#)

**Date** Sunday March 19, 2023 – 8.30 am registration – start 9am – finish 3.30pm

**Venue** Nepean High School, Great Western Highway, Emu Plains, NSW

**Cost** \$40 for those who missed the early bird offer - you can also pay cash or credit card on the day

Electronic payment – BSB 112-879 account 495712594 [note your name]

**Lunch** fast food and pub 500 metres away, restaurants 3 kilometres away, or BYO

**Morning Tea** free

**Contact** John Mulquin 0407 709 351 [jmhbm@bigpond.net.au](mailto:jmhbm@bigpond.net.au)

**Sponsors** Blue Mountains Woodturner

**Demonstrators** George Hatfield, Mike Darlow, Ernie Newman, Lindsay Skinner, Brendon Venner, Simon Begg, Catherine Gorie, Jan Palmowski,



## Members Welfare Report

The welfare of members and their families is important to our club. Please let me know if you or someone you know is unwell, or worse still, no longer with us.

Get Well Cards have been sent to the following Members and/Or Partners

**Lynne De Belle, Ian Frith, Mrs (Don) Hughes and Rob Taylor**

We wish everyone a Speedy Recovery.

Let me know at my email address: [brankahedges@aol.com](mailto:brankahedges@aol.com)

or

Text me on: **0422 655 994**

If anyone has been missed, be assured that the good wishes and sympathies of our club are with you and your family.

Stay Safe ... Branka Hedges....Welfare Officer

## A few tips



When marking timber with a marking knife, it is often very difficult to see the line. The darker the timber, the more difficult it becomes. (I won't even mention those of us with poor eye sight)

After marking, rub a bar of soap along the line you have marked and then rub off the excess and *viola*, the line is more visible.

It would seem that Super Glue is the miracle mix for wood turners. Every time, I've had a crack appear or need a little repair to a piece, someone suggests using Super Glue. Unfortunately, the glue goes off very quickly after it has been opened. So I tend to buy those very small and comparatively expensive single use bottles.

A wood worker from the USA has a suggestion on how to give super glue some extra life. She suggests putting the opened bottles in an empty can together with a packet or two of silica gel. Silica gel is a desiccant that is often put into food and medicine bottles to keep the container's humidity level low. By keeping the humidity level low, you effectively extend the curing time for the super glue.



# TREND TIMBERS

SPECIALIST IN FINE WOODS

Established 1969 A third generation timber family



## YOUR 1 STOP WOODWORKING SHOP IN NSW

Over 100 species  
Select timbers for  
Cabinetmaking  
Furniture  
Joinery  
Woodturning  
Carving

**TREND TIMBERS**  
15 Railway Road North,  
Mulgrave NSW 2756  
TELEPHONE: 02 4577 5277  
FAX: 02 4577 6846

Email: [sales@trendtimbers.com.au](mailto:sales@trendtimbers.com.au)  
[www.trendtimbers.com.au](http://www.trendtimbers.com.au)

Opening Hours  
ALL WELCOME!!  
Mon- Fri 8am-4pm  
Sat 8am-11.30am  
Closed  
Public Holidays &  
Long Weekends

## February Maxi Day

On Sunday 19<sup>th</sup> February around 20 keen members attended our first Maxi/Demonstration Day for 2023. We were fortunate to have Graham Dawes and Greg Sheath explaining the various tool, holding methods and the skills involved in turning Apples and Pears. Viewing was enhanced with the use of the club's new camera system projecting to a couple of well-placed screens thanks to Les Coombes who successfully undertook the project of renewing our previous out-of-date set-up.

One of our number, Maria, remarked that when she first walked in and saw the display of fruit on the table she was sure that they were real – Grahams in particular, as he had chosen to colour the fruit in his presentation to as close to real life as possible. Other fruit presented on the table were finished to display the inherent beauty of the timber used.

Graham began with a short square length which was then rounded to a cylinder before shaping. After sanding an undercoat was applied to seal the timber before colouring. Application of several coats of paint with cotton wool completed the process. A brief discussion on turning other fruits such as grapes, lemons and avocados followed.

Greg's demonstration concentrated more on the involvement of design and proportion and involved different chucking methods. Sanding was talked about and the use of the finer grades of abrasive and to finish, the use of Sanding Sealer, Ozzie Grit, and a finish with French Polish.

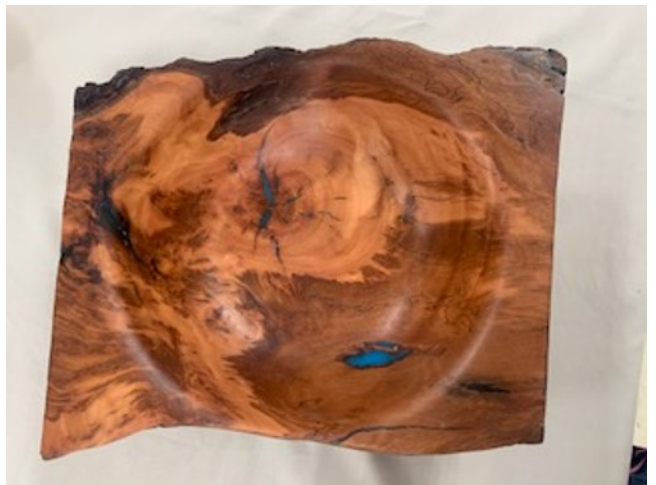
The skills involved in producing these fruits can be employed in the production of a great many other items.

Many thanks to Graham and Greg and their excellent demonstrations, Les for his work with the cameras, Jen for producing yet another very satisfying lunch and Marie for her feedback.

The abundant items for the show and Tell Table were provided by our two demonstrators, Don Nixon, Yo Whybrow, Maria Novak, Andy Tappouras, Anna Dawes, Fred de Jong, and Ray Smith. Amongst those included were 3 multi-center turned hollow forms, pot pourri bowls, a natural-edge olive wood bowl, rustic candle holder, a 2-timber laminated bowl with offset placement, square natural-edge bowl including some epoxy infill, wooden replica of a kerosene lamp, pen and keyring.

Thank you to everyone who participated on the day.





# BUNNINGS BBQ

## SATURDAY 18th February



It was a very good day and we had a lot of help, which was appreciated, particularly as we had several of our regulars away and those that stepped up did an amazing job. We were also able to rotate some positions that allowed some rest time in areas of need. The new eskies were a great success keeping the meat at the correct temperature all day. A big thank you to all not mentioning names as I would be bound to forget someone so to all that attended a big thank you and a special thank you to those that come back to the club to help clean and wash up.

Eddie C.



The latest training of new members has been finalised and are pictured with some of their items, they are from left front ... Luke Manning, Allan Condon and Max Kabilafkas. At the rear is some of Greg's merry band of trainers ... George Manou, Gregory Sheath, Graham Dawes and Rodney Brown. I extend a welcome to our new members and trust that your stay with us will be fruitful and rewarding.

Les Coombes (President)

# HAPPY BIRTHDAY

3599	Mrs.	Catford	Jill	March	04-Dec-13
3662	Mr.	Reardon	Benjamin	March	06-Mar-15
3674	Mr.	Law	Cyril	March	16-May-15
3828	Miss	Hazell	Chantelle	March	23-Feb-19
3909	Mr.	Grebert	Phillip	March	17-Jun-21
3911	Mr.	Kahane	Justin	March	19-Jun-21
4024	Mr.	Kirchmajer	Damian	March	23-Jul-22
4031	Mr.	Petrin	Maurice	March	23-Jun-22
4036	Mr.	Condon	Allan	March	07-Feb-23
4039	Mr.	Kabilafkas	Max	March	13-Jan-23
3865	Ms.	Whybrow	Yo	March	03-Feb-20



It was with great pleasure to go to Savage Conveyers and present Perter Savage a certificate of appreciation, by the President, for the conveyers he supplied for the club demonstration trailer.

We met by chance some time ago and Peter, after asking several questions, appreciated the work the Club was doing and thought he would like to contribute something and was only too happy to help and supply what we have found to be one of the most helpful pieces of equipment.

It has helped in making the change overs, among other things, uneventful in ease and accessibility. An extra big thank you to Peter and his employees for their kind contribution and we wish them all the very best for the future.

Eddie C.

**Pat Carroll (Irish wood Artist) uses a classic design feature that looks great and also disguises the join.**



## Rustic Beaded Box

A rustic beaded box made from basic tools other than homemade beading tool. While Pat used Irish Yew for this project, I believe that Boxwood is a good substitute. Further enhancements were added to the piece by using texture on the handle to accentuate the rustic feel of a well-used object. A design change was made to the piece with the addition of colour. Then Verdigris gave the aged look to the piece, finished off with a light brush of copper gilt cream. A loose-fit lid suited this piece as it was designed as a trinket or jewellery box. The base needs to stay in place when the lid is opened so as not to risk losing its small contents.

**Construction Overview / OVERALL DIMENSIONS:** 147mm H x 105mm W

### EQUIPMENT AND MATERIALS

#### Tools

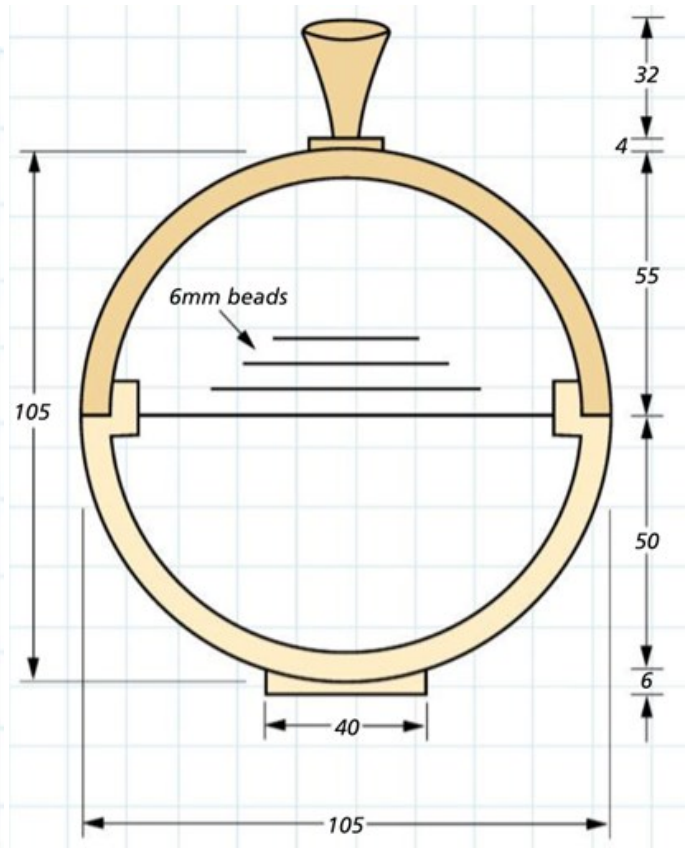
- 25mm spindle roughing gouge
- 13mm spindle gouge
- 6mm parting tool
- 4mm parting tool
- 6mm spindle gouge (beading tool)
- 25mm round nose scraper
- Pointed detail tool
- Texturing tool
- Callipers

- Dust extractor
- Danish oil
- Black spray paint
- Verdigris wax
- Copper gilt cream
- Abrasives, from 120 grit to 400 grit

#### Materials

- Yew (*Taxus baccata*)  
220mm x 100mm x 100mm

The measurements shown are guidelines. By all means follow the pattern or create the item to your ability, requirements and lathe capacity.



**1** The piece is mounted between centres and, using a spindle roughing gouge, brought to a cylinder. Instead of using yew, you could use any close-grained hardwood for this project. But whatever timber you use, make sure it is one that you can cut beads clearly with minimal tearout.



**2** A tenon is formed on each end of the piece to suit the jaws of your Chuck. I need a 50mm tenon for my chuck, but of course adjust the size to suit your Chuck jaws. Once cut, insert the piece into the chuck and tighten securely. The piece in the Chuck will be the top of the box.

**3** With the piece trued up, comma it is inspected for cracks or issues that may compromise safety during turning or the quality of the finished piece. Using a divider or ruler, mark a centre line on the piece.



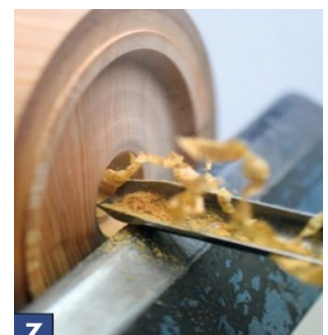
**4** Using the 4mm parting tool, create a parting approximately 25mm in into the centre of the piece. Then, using a 6mm parting tool, create a tenon to the recommended size on the plan. Again, using 4mm parting tool proceed to part the piece off, leaving 1mm [witness mark], of the Tenon on the top of the piece and a tenon of 6mm minimum on the bottom of the piece.

**5** Complete the parting with a saw if you are not confident completing the parting off with the chisel when the lathe is rotating. Note the scrap wood on the lathe to protect the saw and lathe bed.



**6** Drill a hole to the required depth into the piece. Use masking tape on the drill bit to give exact depth. This allows an easy starting point for the gouge.

**7** With the flute of the 13mm spindle gouge at 45 degrees or the flute facing 10:00 o'clock gently pull from the centre out allowing the tip of the tool to cut. Although there is plenty of waste wood light cuts are best helping to avoid torn grain.





8

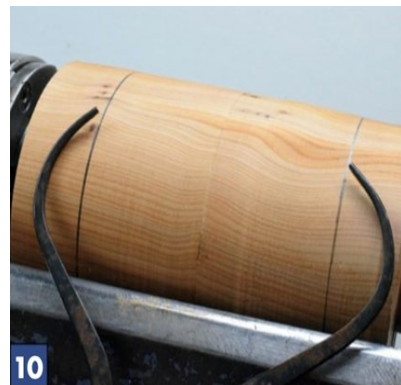
8 Proceed all the way out with the cut stopping 1mm away from the witness mark left by the parting tool. Use the parting tool if preferred to clean the recess and keep the walls parallel.



9

9 Offer up the bottom of the piece to check the fit. Proceed with very light cuts until the two pieces fit comfortably together. Align the grain and bring up the tail stock for support.

10 If an exact sphere is the desired shape, check the diameter of the piece with callipers, then transfer the measurement to the piece ensuring the joining is in the centre. Cardboard templates or sphere jigs can be used. For this project, freehand was applied.



10



11

11 Remove as much waste wood as possible with the parting tool, working from the outside inwards. Use light cuts to help minimise the risk of damaging the piece. Work to the line on both sides.

12 Using a 13mm spindle gouge shape the piece, working from the highest point towards the centre with each cut. Working from the outside towards the middle, forming the piece, continuously check the shape.



12

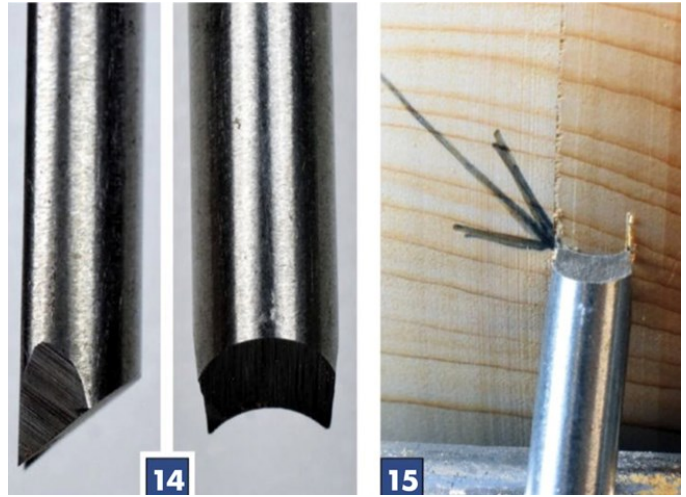


13

13 Light cuts rolling the tool as if forming a bead. Refine the piece to the required shape, remembering not to cut into the joint area as this will cause problems with the spigot and tenon.

**14** The tip of a 6mm spindle gouge has been ground to approximately 40°. The sides have also been ground to minimise burnishing the neighbouring beads with friction. Practise on a scrap piece of wood is advised.

**15** Use as fast a speed as is safe to help give a clean cut. With the left point of the tool exactly in the joint the cutting tip is exactly on centre, by raising the handle lightly engaging the cut. The tool is very minimally rocked from side to side allowing the wings to shear cut each side as it is rocked. Once the centre of the bead is formed, withdraw the tool or tear out can occur.



**16** The next bead to the left of the joint is formed next, ensuring the point of the tool is again in the joint. Check for a clean joint on the piece. Proceed with marking out at least three beads at a time using the beading tool. This also gives a reference point for the tool to engage the cut.

**17** At this point the pieces sand, starting with 150 grit and finishing with 400 grit.

**18** The top is now hollowed with a 13mm spindle gouge, using the same technique as in step 6. The inside is refined using a 25mm round nose scraper and a bead added for design, then sanded through the grits and finished inside with Danish oil.



**19** The top is removed from the Chuck and the bottom fitted and secured in the Chuck. The top is fitted, and masking tape is added for further security. More waste wood is removed and the beads on the top completed. Always use the tailstock, when possible, for securing the piece.



**20** As the handle was finished and texture applied to the top, the decision to add colour was taken. With the piece sprayed black, several light coats are applied and allowed to dry. Use caution with dyes as they can bleed into the inside of the piece.

**21** Due to the afterthought of the colour addition, the inside of the rim had to match the outside. The inside was finished with Danish oil and, to protect it from overspray, a balloon was inflated to fit tight to the surrounding age.



**22** The top is removed and the rim is painted to match the outside of the piece. The base is hollowed using the same procedure as in step 6. The inside is sanded from 150 grit to 400 grit and Danish oil applied.

**23** A scrap piece of wood is used as a jam chuck to finish the base. Masking tape is again used as a further safety precaution. The beads are completed and the remaining natural wood is sprayed black.



**24** Verdigris wax is added for an aged, worn look. A light brush of copper gilt cream adds to the rustic effect. When the paint dries, the base is cut back to the natural wood, again sanded through the grits and detail lines added for visual affect. Two more coats of oil are added to the interior. It is lightly denibbed with 320 grit between coats.

**25** Here's the finished piece without Loose top lid.





# 3 DAY SALE

**THURSDAY 23<sup>RD</sup>, FRIDAY 24<sup>TH</sup> SATURDAY 25<sup>TH</sup> MARCH**  
**EXTENDED TRADING SAT. 25<sup>TH</sup> OPEN TILL 3PM**

### OS-58 - Vertical Oscillating Bench Bobbin Sander

- 1/2", 3/4", 1", 1-1/2", 2" & 3"
- 370 x 290mm cast iron table
- Rotating & oscillating
- 450W / 240V motor



**\$297** (W843)  
**SAVE \$55**

### BELT & DISC LINISHER SANDER L-69A

- 150 x 1220mm sanding belt
- 230mm disc with guarding
- Tilting table and mitre guide
- 1hp 240V motor



**\$499** (L107)  
**SAVE \$73**

### bts 900x

- 150mm width capacity
- 100 x 915mm belt
- Ø150mm disc
- Tilting table & mitre guide
- 370W 240V motor



**\$275** (L105)  
**SAVE \$44**

### cs-55 - Circular Plunge & Mitre Cut Saw PACKAGE DEAL

- 160mm saw blade
- 45° tilt saw head
- 1.2kW/1.6hp, 240V
- Includes guide rail, clamps & stops



**\$329** (W874)  
**SAVE \$115.40 OFF RRP**

### Deco XL - Variable Speed Scroll Saw

- 406mm throat capacity
- 125W / 240V motor
- Includes LED light, air blower, flexidrive shaft with chuck & 64 piece sanding kit

12 POSITION  
TILTING TABLE  
0-45°



**\$299** (W350)  
**SAVE \$53**

### TiGer 2000S - Wetstone Grinder

- 200mm stone & 225mm hone wheel
- 120rpm grinding stone speed
- 120W, 240V motor
- Includes straight edge jig, setting gauge & honing paste



**\$239** (W859)  
**SAVE \$36**

### PJ-6B - Bench Planer Jointer

- 153mm capacity
- Built-in dust fan with collection bag
- 1.1kW / 1.5hp 240V motor
- 10000rpm blade speed
- Cast iron table & fence



**\$495** (W619)  
**SAVE \$77**

### MM-50 - Digital Moisture Meter

- Measures moisture in timber & building materials by detecting electrical resistance via the two pins
- Wood: 5-50%
- Building Materials: 1.5-33%
- Measuring accuracy: ±2%



**\$39** (W6455)  
**SAVE \$10.50**

### WL-14V - Mini - Wood Lathe

- Includes 150mm & 300mm tool rests, 80mm faceplate, drive & live centres
- Ø356 x 470mm turning cap.
- Electronic variable speed
- Digital readout speed display
- 0.75hp, 240V motor

12 POSITION  
SPINDLE  
INDEXING



**\$625** (W385)  
**SAVE \$101**

### WL-46A - Electronic Variable Speed Wood Lathe

- Ø462 x 1194mm turning capacity
- Electronic speeds 100-3200rpm
- 1.5kW/2hp, 240V motor
- Includes faceplate, drive & live centres, toolrest & stand
- Cast iron bed, head and tailstock



**\$2,596** (W387)  
**SAVE \$253**

### DUST COLLECTORS

#### HA-1000

- 109cfm HPLV system
- 5 micron filter
- 50 litre tank
- 1.5hp, 240V motor



**\$209** (W885)  
**SAVE \$33**

#### DC-3

- 1200 cfm - LPHV system
- 5 Micron fine filter bag
- 1.5kW/2hp, 240V motor



**\$495** (W394)  
**SAVE \$77**

## WOOD LATHE & ACCESSORIES

### WSC-KIT - Scroll Chuck Accessory Kit

- Suits WSC-100 Scroll Chuck



**\$115** (W375)  
**SAVE \$17**

### WSC-100 - Scroll Chuck 100mm

- 100mm body diameter
- 4 jaw self centring
- 0.2mm tolerance
- Internal or external



**\$165** (W370)  
**SAVE \$33**

### WT-3C - Carbide Wood Turning Tools - 6 Piece Set

- 1 x handle, 4 x tips & 1 x magnetic guard
- 4 interchangeable carbide chisel scrapers
- 300mm handle length
- 450mm total length



**\$75** (W300)  
**SAVE \$13**

### WT-6 - HSS Wood Turning Tools - 6 Piece Set

- 12mm Deep Bowl Chisel
- 24mm Roughing Gouge
- 24mm Oval Skew
- 19mm Dorned Scraper
- 5mm Parting & Beading
- 9mm Spindle Gouge



**\$125** (W302)  
**SAVE \$18**

### CHS4HD - HSS Wood Turning Tools

- 4 Piece set
- Master Chisel Set



**\$325** (W3039)  
**SAVE \$60**

[www.machineryhouse.com.au](http://www.machineryhouse.com.au)

SYDNEY  
(02) 9890 9111

BRISBANE  
(07) 3715 2200

MELBOURNE  
(03) 9212 4422

PERTH  
(08) 9373 9999

Specifications & Prices are subject to change without notification. All prices include GST and valid until 31-03-23

UNIQUE PROMO CODE  
**WTN2303**  
ONLINE OR INSTORE!

**\$70 FREE** DISCOUNT VOUCHERS  
\$20 OFF \$100+ \$50 OFF \$200+  
**BECOME A MACHINERYHOUSE MATE**  
[www.machineryhouse.com.au/sydney](http://www.machineryhouse.com.au/sydney)

63\_WTN\_010623

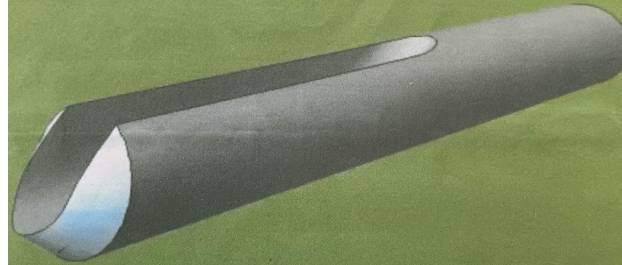
## THE BACK PAGE

Item 23

Right and Wrong  
BOWL GOUGE

MARCH 2023

### RIGHT: TRADITIONAL



This is the traditional shape tried and proven over time to be the best basic starting tool for cutting bowls. This tool differs greatly to the roughing gouge where the corners are relieved allowing for clearance, reducing the possibilities of “DIG INS”. The recommended grind is 40 degrees, traditionally however, the more accepted grind is 40/40. These angles refer to the main bevel being 40 degrees and the sweep back angle on wings are also 40 degrees. Any change in these angles more than 5 degrees starts to affect the performance of the tool. While the main design is for bowl work it can be used for roughing, spindle, detail and scraping in some circumstances.

### WRONG: ???? MODIFIED OVER TIME



This is not necessarily wrong and generally referred to as the fingernail grind. The best sharpening for performance is bevel 45 degrees and the wings ground to 50 degrees and again further than this starts to affect the tools performance. It is important to note the traditional and fingernail grinds are the standard proven over time. Variations to this can be very dramatic and turners sharpen their tools where they get the best performance in the way they use them.

**NOTE:** Bowl gouges are generally deep fluted unlike spindle gouges with a shallow flute having a similar grind.

**Note.** As in all professions there are many and varied opinions and ways of doing things. This is true of wood turning. These articles are the results of my reading article publications.

Eddie C