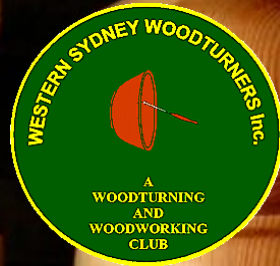


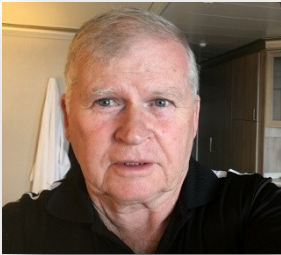
# WesTurn News

The official organ of Western Sydney Woodturners Inc.

Issue: 272



February 2024



**Western Sydney Woodturners Inc**

**Twin Gums Retreat, Corner Northcott Road and Diane Drive**

**PO Box 4008, Lalor Park NSW 2147**

**Web Site: [www.westernsydneywoodturners.com.au](http://www.westernsydneywoodturners.com.au)**

February is starting out as a busy month as last Saturday was the BBQ at Bunnings which, although not as successful as many in the past, still raised some needed cash for the Club. The comradery that was present amongst the Club members that assisted was amazing and offset the less than spectacular result, however, the money that was raised will be put to good use as we have a few projects still to be started that will be beneficial to all members. Thanks to Eddy, Paul, John, Andy, David, Rohan, Gary, Michael, Maurice, Phillip and Manny for your attendance and help. The day was amazing because of your attendance and enthusiasm.

Our regular monthly meeting, the first for this year, will be held on Tuesday night the 13th. Every member is welcome to attend. On Wednesday, the day after the meeting we will be at Rosehill Racecourse to setup for the Craft Show which will be commencing on Thursday and going through to Saturday. The hours will be from 9.30am until 4.00pm. We have been allocated a very generous space and the organisers have been very forward with information and assistance to us. They have other venues booked for further craft shows in the coming year and we have been invited to attend them as well. More about these dates as they become available. Our supported Charity, the Children's Ward of the Mount Druitt Hospital, will be featured prominently and I'm hoping that sales of our charity items will benefit the fund beneficently so that we can continue donating much needed equipment to them.

There will be no Maxi Day this month as it is too much to ask of those that are involved to be on the go every single week but the Management committee is considering to switching Maxi Days to bi-monthly instead of monthly as a BBQ and Maxi Day is not possible in the same month. More of this later.

The Club is progressing well and we continue to do so because of your support and encouragement. We have seen many improvements over the last 2 years, all to benefit you, the member. We will continue, as best we can, to keep providing and improving our Club premises as time and money permits.

Until I see you at the Club stay safe and stay well ...

Les Coombes (President)

# SAFETY MATTERS

## A REMINDER ABOUT WORKSHOP SAFETY

We must all keep in mind the importance of WORKSHOP SAFETY. Please THINK and ACT responsibly at all times. It is up to all of us to fulfill our commitment by wearing at all times;

- ◇ Dust masks
- ◇ Protective glasses
- ◇ Suitable clothing
- ◇ Footwear
- ◇ Ear protection

It does not hurt to discuss safety with other members if they are not doing the right thing.

## ARTICLES FOR NEWSLETTER

Could I please ask those members who attend our demonstrations, maxi-days etc; if you could take some photographs and a brief description of the event so these can be published in the newsletter I am sure all members would be interested in reading about the events of the day. Thank you.....Editor.



## CUT OFF DATE FOR ARTICLES

Please note the cut off date for articles to be included in the Newsletter is the last day of the month.

All members are welcome to submit articles for inclusion.

Please send them to the editor;

Email address: [augoodtime@hotmail.com](mailto:augoodtime@hotmail.com)

## Club Committee

**President:** Les Coombes  
(0408760131)

**Vice Presidents:** John Kostrzewa and  
Paul Collins

**Secretary:** Jen Coombes

**Treasurer:** Andrea McFarlane

**Public Officer:** Sandra Ongley  
sandraongley21@gmail.com

**Librarian:** Rod Brown

**Editor:** Robert Ryan  
ramnet2759@bigpond.com

**Webmaster:** Les Coombes  
wswtpresident@outlook.com

**Training Co-Ordinator:** Greg Sheath

**Trainers:** Graham Dawes (JP), Rod  
Brown, Ron Devine, Greg Sheath, Rob  
Stewart, George Manou, Bob Taylor &  
Bob Young.

### Shop Manager:

Les Coombes

### Equipment Maintenance:

Cindy Kersaitis, (Coordinator)  
Manny Farrugia, Dave Matthews,  
Graham Dawes (JP), Bob Young, Ron  
Devine, Glenn Freeman and George  
Manou.

**Welfare Officer:** Branka Hedges

**Membership Secretary:** Branka  
Hedges 0416 020 290

[brankahedges@aol.com](mailto:brankahedges@aol.com)

If you have any suggestions or  
information concerning the club  
please contact any of the  
above committee members.

## Club Hours

**Mon-Fri:** 8:30am – 4pm....\$5

**Friday Nights:** 5pm – 9pm....\$3

### Saturday Turning

**Ladies Day:** 2<sup>nd</sup> Saturday...\$5

**Contact:** Anna Dawes

0409 460 693

annafdawes@hotmail.com

### 4th Saturday of Month

8.30am – 4.00pm...\$5

Every member welcome

**Contact:** Les Coombes

0404 001 562



## Club Meetings

### Shop items

- ⇒ Ozzie Grit
- ⇒ Friction Polish
- ⇒ Sanding Sealer
- ⇒ Sandpaper
- ⇒ Club Shirts
- ⇒ Dust Jackets
- ⇒ Club Badges
- ⇒ Pen Kits
- ⇒ Pen Blanks – Acrylics
- ⇒ Lazy Susan Bearings
- ⇒ Cheese Knives
- ⇒ Salt Mills
- ⇒ Pepper Mills

**Many more items also  
available**



**A very big thank you  
to Michelle Rowland MP,  
the Member for Greenway,  
for her continued support  
which includes the  
printing of this newsletter.**

## Joke of the Month

**Q: How does NASA organise a party?**

**A: They Planet.**

# Craft Alive

## SYDNEY 2024

### THE BASICS

#### WHEN

Thursday 15 – Saturday  
17 February

#### WHERE

Exhibition Hall  
Rosehill Gardens Racecourse  
James Ruse Dr  
Rosehill NSW 2142

#### SHOW HOURS

9.30am – 4pm daily

#### BUMP IN

10am – 5.30pm  
Wed 14 February

#### PARKING

Ample free venue parking

#### LIGHTING

Lighting is good but additional  
lights will make a site 'pop'

#### FLOORING

Venue is carpeted

### THE VENUE



#### ROSEHILL GARDENS RACECOURSE

One of Western Sydney's most vibrant venues with ample free parking, nearby hotel accommodation, close proximity to the geographical centre of Sydney (Parramatta City) and easy access to Sydney's CBD.

#### POPULATION

Rosehill Gardens is located in the heart of the demographic centre of Sydney.

Urban Sydney has a population of 4.7M and has slightly more females at 50.5% with a median age of 36.

#### ECONOMY

The Racecourse is located in Sydney's Western Suburbs, but attracts visitors from all over the city. Sydney is Australia's largest Capital City and NSW is the largest State economy.

#### HISTORY

2024 is the inaugural CraftAlive Sydney however CraftAlive is very familiar with the location and audience having delivered multiple successful events at Rosehill Gardens and across Greater Sydney.

#### ABOUT THE HALL

The Exhibition Hall is a pillarless and light filled venue opening out onto ample green spaces overlooking the vibrant Rosehill Gardens. With high ceilings, a wealth of space, amenities and state-of-the-art connectivity.

ph: 03 9682 5133 • info@craftalive.com.au

[WWW.CRAFTALIVE.COM.AU](http://WWW.CRAFTALIVE.COM.AU)

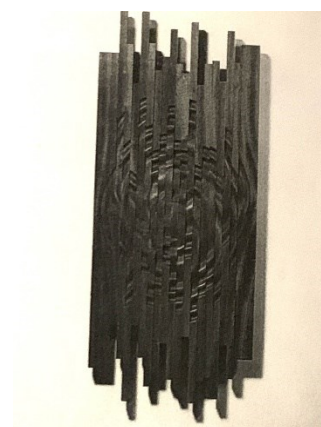
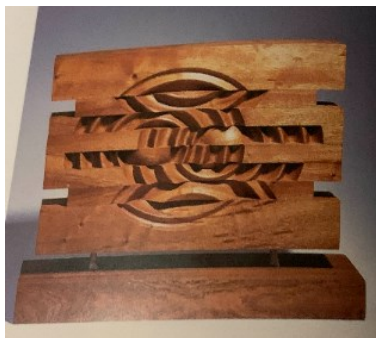
# Looking for a Challenge, to create something a little different?

Members are invited  
to turn a simple 'rosette' on a square of timber,  
cut their creation into lengths which are then mixed-up/  
re-organised and glued or dowelled together into a more  
sculptural piece.

Maybe a trivet, wall-hanging, or ...



Robyn Mahoney



John Hunnex, Stephen Hogbin

Please bring for display on Maxi Day 19<sup>th</sup> May.



## Hot Topic From the Internet . . .

(This to encourage discussion. The comments and opinions of others are theirs alone and should not be considered instruction r advice.)

What do you think? Drop me an email and I will publish member opinions



**Enzo Palladino**

4 d · 🌐

Table centerpiece, in this case candy holder or chocolate holder in teal and chestnut wood....

Work that seemed simple but it turned out more challenging than expected, I had to use in the lab several different tools for this bowl, from the circular saw, to the plate, calibrator, gluing with clamps and finally lathe and sanding...

I finished the finish with nitro turapores and clear matte paint....

But I intend to make an open vase with the same technique but with different essences...

The measurements are 20 cm diameter and 14 height

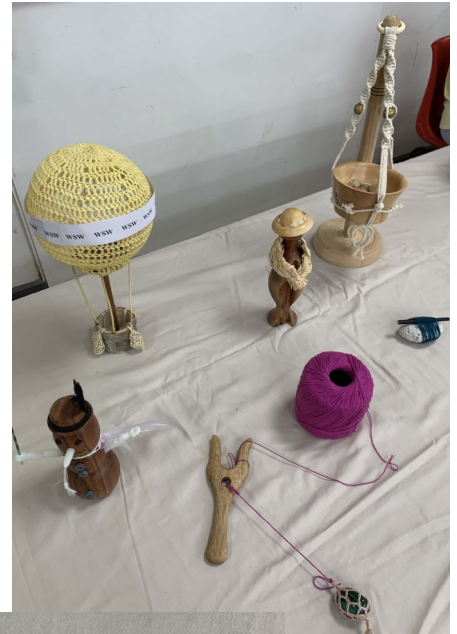
⚙️ · [Rate this translation](#)

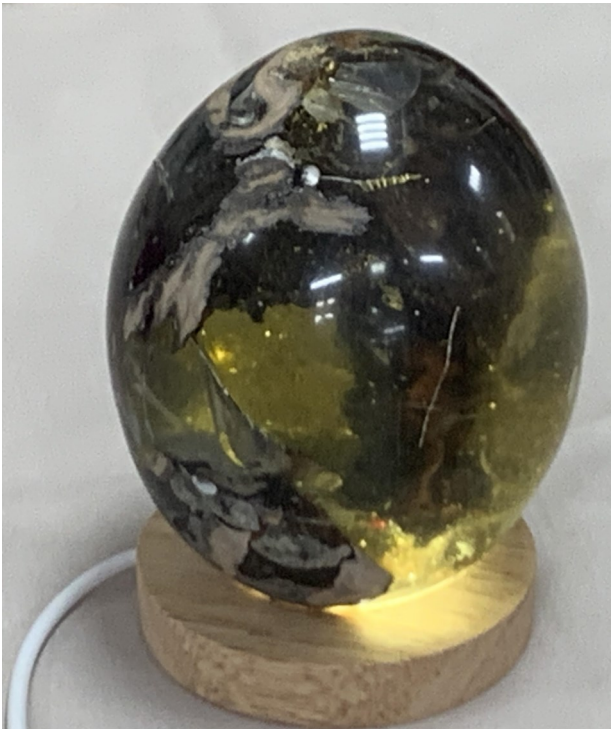


Facebook post by Enzo Palladino: I think this is an amazing piece.

# String, Stone Wood Challenge

Last September/October some of the women in the club set themselves a challenge to utilise the three elements - string (or like material) stone and wood - in a piece of work. A work that did not necessarily incorporate any turning. The pictures reveal the variety of thought brought into play and the limited time available to some of those who participated. All entries were display at Ladies Day in December. It would be great if other club members feel challenged to create something of their own and display on a maxi day





# Chainsaw and Timber Conversion



A chainsaw can be a very useful additional tool for a woodturner, for harvesting his own timber and cutting it into manageable sizes that his bandsaw can cope with. An electric chainsaw with a circuit breaker is better for occasional use than a petrol powered one, which need to be used regularly to remain in good condition. Chainsaws should be treated with a lot of respect and ideally the user should take a chainsaw safety course.



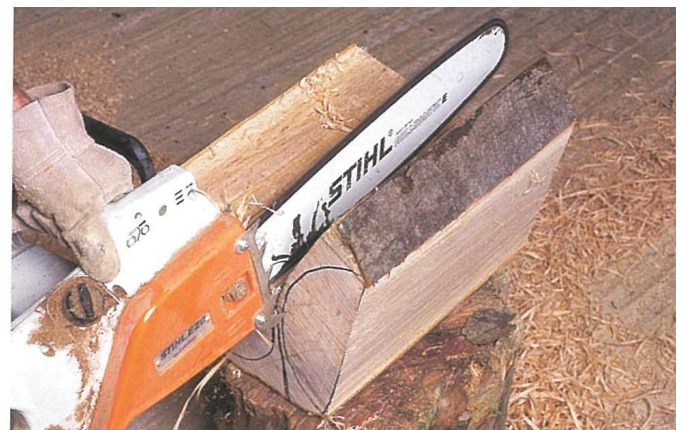
1. Here, an electric chainsaw is used to cut the end off a 14in (355mm) diameter by 16in (405mm) long beech log, to remove the splits and reveal sound wood.



2. You can now decide how to divide the log up to get the best from it. Using a mixture of freehand drawing and a hardboard disc, mark out the shapes and sizes of the blanks you want with a black marker pen.



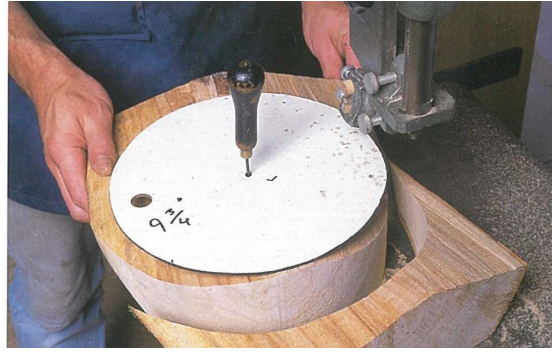
3. The first cut takes a slice off the side of the log adjacent to the largest bowl blank, to provide a stable base. The second cut is made down the back of the blank, stopping at the intersection of the cuts. The log is then rolled onto the flat to make the third cut, which releases that section.



4. The final cut is made to separate the large bowl from the section that contains the endgrain cylinders.



5. Use a disc of the appropriate size to mark the widths of the two bowl blanks contained in this section, then cut them in half. Repeat this process on the section containing the end-grain cylinders.



6. When cutting with the chainsaw has been completed, you can then cut the blanks more accurately on the bandsaw.



7. Pin the plywood or hardboard discs into place with an awl, and then use this as a template to cut around. These discs alleviate the problem of cutting circles from irregular-shaped lumps.



8. The discs can also speed up the cutting process when you have a flat surface to work on, as in the case of these end-grain cylinders.



9. Paint an emulsified wax sealer on the ends and 1 1/2 inches (38mm) down the sides of the blanks, to prevent the exposed end grain from splitting until you are ready to turn them.



10. Another way to prevent blanks from drying out in the short term is to wrap them in polyethylene cling wrap, as are these blocks that have been cut and are ready to be turned into hollow forms.

# Turnfest 2024

22nd, 23rd and 24th March 2024

## Australia's Premier Woodturning Event

Registration includes all meals and 2 nights accommodation at the Sea World Resort, Gold Coast

Turnfest offers 3 days of woodturning demonstrations by many renowned woodturners and carving professionals from Australia and the world.

100 demonstrations and seminars are on offer where each rotation is repeated so attendees can choose from the different styles of turning, carving and pyrography. See the amazing instant gallery of pieces brought to the event by the attendees and presenters. Visit the onsite Tool Shop stocked with a large range of equipment including unique tools used by our international presenters which are not readily available in Australia.

The woodturning clinic will be held in the Tool Shop area on Thursday and Friday to entertain you while we turn the resort into a woodturning haven.

On the closing day, a draw will be held of works donated by many of the presenters and suppliers.



Piece by Ian Moss, Western Australia

## Presenters

### International Presenters

Curt Thebald USA, Kip Christensen USA  
Phil Irons England, Rebecca DeGroot USA, Rex Birmingham USA, Cynthia Carden USA,  
Mark Hancock England / USA

### Australian Presenters

Paul Barton Vic, Gary Field Qld, Len Mengel Qld,  
David Drescher Qld, Jim McConnachie Qld,  
Dave Barden NSW, Robert McKee Qld,  
Jan Palmowski NSW  
Plus Clinic Presenter: Ian Moss WA



## Non Turning Partners

While you may not be a woodturner, there are plenty of activities for you. There is a craft room or you can have a massage and laze around the pool. Partners have full access to Turnfest activities and all meals. All participants are charged the same price to keep the total price to a minimum so no one is disadvantaged.





**HAPPY BIRTHDAY**

Member #	Title	First Name	Surname
557	Mr.	Graham	Dawes
2254	Mr.	Emanuel	Farrugia
2761	Mr.	Tony	Simiana
2860	Ms.	Fiona	Deane
3639	Mr	Mehmet	Colpan
4009	Mr.	Maurie	Knight
4047	Mr.	Michael	Grima
4055	Mr.	Lachlan	Holmes



# TREND TIMBERS

SPECIALIST IN FINE WOODS

Established 1969 A third generation timber family



**YOUR 1 STOP WOODWORKING SHOP IN NSW**

Over 100 species  
 Select timbers for  
 Cabinetmaking  
 Furniture  
 Joinery  
 Woodturning  
 Carving

## TREND TIMBERS

15 Railway Road North,  
 Mulgrave NSW 2756  
**TELEPHONE: 02 4577 5277**  
**FAX: 02 4577 6846**

Email: [sales@trendtimbers.com.au](mailto:sales@trendtimbers.com.au)  
[www.trendtimbers.com.au](http://www.trendtimbers.com.au)

Opening Hours  
**ALL WELCOME!!**  
 Mon– Fri 8am-4pm  
 Sat 8am-11.30am  
 Closed  
 Public Holidays &  
 Long Weekends



## Polish Application

A quick reminder, the quality of finish is dependent on the quality of the end turning and sanding.

On that basis assuming the finish is up to acceptable standard and ready for polish then following on from the November "Back Page" there is NO short cuts to obtain a quality polished finish.

The PPP foundation and polish we sell is second to none and if applied in several thin applications the finish will be amazing.

However, if you attempt to achieve a good finish with one thick application it does not work. Because of the thickness of the polish, it is NOT possible to get enough heat into the polish and it becomes very sticky and tacky.

There are NO short cuts, do the right thing apply approximately 3 thin coats and be amazed with what a good, polished finish looks like.



### Members Welfare Report

The welfare of members and their families is important to our club. Please let me know if you or someone you know is unwell, or worse still, no longer with us.

Get Well Cards have been sent to the following Members and/Or Partners

**Maria Novak**

We wish everyone a Speedy Recovery.

A Sympathy card was also sent to:

**Ray Smith**

Let me know at my email address: **brankahedges@aol.com**

or

Text me on: **0422 655 994**

If anyone has been missed, be assured that the good wishes and sympathies of our club are with you and your family.

Stay Safe ... Branka Hedges....Welfare Officer

## LACQUER & OIL FINISH.

ADAPTED FROM FWW 121

RAW WOOD COATED WITH OIL, (LINSEED TUNG, DANISH etc) MAY BE OVER COATED WITH NITROCELLULOSE LACQUER.

OIL BRINGS OUT THE WOODS FIGURE & COLOUR & THE LACQUER OFFERS PROTECTION,

THE OVERALL EFFECT IS "DEPTH OF FINISH." WITH EXCELLENT FIGURE & COLOUR.

DANISH OIL IS THE BEST TO USE BECAUSE IT DRIES & CURES MUCH FASTER THAN LINSEED & OTHERS. DANISH OIL IS REALLY A LONG-OIL VARNISH, WHICH DRIES RELATIVELY HARD WHEN COMPARED WITH LINSEED OIL.

HOW TO - PREPARE THE WOOD'S SURFACE (IE SMOOTH & SCRATCH FREE) ALLOW 4-5 DAYS AFTER APPLYING DANISH OIL FOR CURING, THEN LIGHTLY SCUFF/SAND & SPRAY A DUSTING OR LIGHT COAT OF LACQUER FOLLOWED BY 2 OR 3 MORE LIGHT COATS OF LACQUER.

IF DANISH OIL IS ALLOWED TO CURE COMPLETELY THERE WILL BE NO ADHESION PROBLEMS

THIS SYSTEM WORKS WELL ON DARKER TIMBERS SUCH AS WALNUT, CHERRY etc

BY EXPERIMENTATION, TINTING OR SHADING OR COLOURING OF THE LACQUER COULD GIVE PLEASING RESULTS.

# HUGE WOODWORKING RANGE



**SB-12  
TABLE SAW**  
\$1,375 (W452)



**ST-254  
TABLE SAW**  
\$1,749 (W466)

OPTIONAL SLIDING  
TABLE AVAILABLE



**ST-12D  
TABLE SAW**  
\$3,289 (W454)

MADE IN TAIWAN

THE ULTIMATE  
WOODWORKER'S  
CHOICE

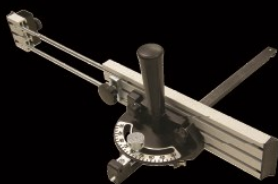


**OAV P30CE  
Panel Saw**  
\$10,725 (W740)

## TABLE SAWS

Table Saw is a proven, robust machine, constructed largely from cast iron and heavy gauge steel, and primarily designed to rip through all the hard timbers that is required in many of today's professional workshops. Dust can be removed via a dust port outlet at rear of machine when connected to a comparable optional dust extraction system.

## ACCESSORIES



**MTR-24  
Mitre Gauge & Fence**  
\$77 (W308)



**PSK5 - Safety Push  
Blocks & Stick Set**  
\$33 (W309)



**RG-190  
Ripping Gauge**  
\$59.40 (W311)



**RS-1125  
Roller Stand**  
\$66 (W343)

**HARE & FORBES** 100% Australian Owned Est. 1930  
**MACHINERYHOUSE**

"Setting the standard for quality and value"

UNIQUE PROMO CODE  
**WTN2402**  
ONLINE OR INSTORE!

**\$70 FREE**  
DISCOUNT OFFER

**MALE**  
MACHINERY

**SYDNEY**  
(02) 9890 9111  
1/2 Windsor Rd,  
Northmead

**BRISBANE**  
(07) 3715 2200  
625 Boundary Rd,  
Coopers Plains

**MELBOURNE**  
(03) 9212 4422  
4 Abbots Rd,  
Dandenong

**PERTH**  
(08) 9373 9999  
11 Valentine St,  
Kewdale

Specifications & Prices are subject to change without notification.  
All prices include GST and valid until 29.02.24

01\_WTN\_010224

## THE BACK PAGE

Item 49

Working the Skew

February 2024



The skew has been for a long time regarded as the most difficult tool in the toolbox to master, I sometimes wonder if that is because there have not been enough emphases on how when teaching or it has been expressed that way instead of treating it the same way other tools are introduced. Either way lets see if we can't help in some way. The following is extracts from George Hatfield's recent publication "Woodturning Tips for Beginners" and other searches.

We all overlook the importance of stance but here it is more important as the need for sway and having your head over the cutting point is a big advantage.

The tool itself must be very sharp and supported firmly against your body giving better control.

"Remember you control the tool don't let the tool control you." If you find you must apply more pressure than normal stop! have a look at the cutting edge it may be rolled and not allowing you to control the cut from dust to clean shavings.

Remember the cutting edge has 3 main sections "1/3 High Point" "1/3 middle" and "1/3 Low Point"



These each have their respective use the high point detailed, middle planing and low beads. NOT restricted to or limited to as there are many other uses, they able to achieve.

The main area for using the skew is in the 5 to 10 past positions on the work piece. "That is 1/3 to 2/3 of the way from the center line and the top. Again, it is NOT restricted to this area as it is capable of being used in many situations considered normal operation.

These are some points on overall correcting and hopefully helping to remember all the different cuts have their own set of rules.

Complete and more explicate explanation can be found in the book referred to above and purchased through club contacts.

Eddie C

**Note.** As in all professions there are many and varied opinions and ways of doing things. This is true of wood turning. These articles are the results of my reading article publications.