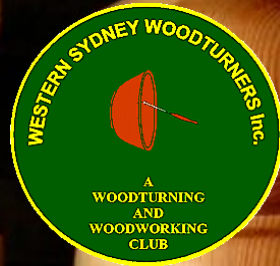


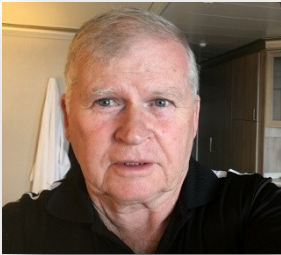
WesTurn News

The official organ of Western Sydney Woodturners Inc.

Issue: 274



April 2024



Western Sydney Woodturners Inc

Twin Gums Retreat, Corner Northcott Road and Diane Drive

PO Box 4008, Lalor Park NSW 2147

Web Site: www.westernsydneywoodturners.com.au

April is Bunnings BBQ month and this month it happens on Saturday 20th which is, at the time of me writing this, 14 days away. Your help is needed so please place your name on the list which is on the Club's notice board or just turn up on the day. Several regular members, including myself, will be away on this day so any help you can give will be gratefully accepted. Two sessions are available, 8:00am until midday or midday until 4:00pm or, if you wish, you can assist all day.

The mobile cabinet with the new sharpening system on it is almost ready and when finished will be parked where the old white cabinet was in the tool room. Another new sharpening system is also planned to replace the ageing system currently in use. The parts have been purchased and work will begin when time permits.

I have been told that last month's Maxi Day was a huge success. Thanks to all that turned up and especially thanks to those members who cooked and provided the lunch and ensued that everything was cleaned up after the event. It seems that it is always the same members that extend themselves so that all members can benefit but this situation can't last much longer as those that put themselves out to benefit all are ageing and soon won't be capable of standing and working all day. We need your assistance, not only at the BBQ's but also for Maxi Days and other jobs that need to be done around the Club. Running the Club is a big job which requires as many as possible to handle all that must be done, please assist where and when you can.

I, on behalf of the Committee and members wish to thank the Ladies that volunteered to pack the Easter eggs and take them to the children and their parents at the Children's ward of the Mt Druiitt Hospital. From what I have been told this was a very pleasing day for all and I think it was a great initiative of the Club's Committee to ask our Lady members to do this task. They have done it for several years now and I sincerely hope that the new Club Committee will continue with this initiative. Well done Ladies.

Until I see you at the Club stay safe and stay well ...

Les Coombes (President)

SAFETY MATTERS

A REMINDER ABOUT WORKSHOP SAFETY

We must all keep in mind the importance of WORKSHOP SAFETY. Please THINK and ACT responsibly at all times. It is up to all of us to fulfill our commitment by wearing at all times;

- ◇ Dust masks
- ◇ Protective glasses
- ◇ Suitable clothing
- ◇ Footwear
- ◇ Ear protection

It does not hurt to discuss safety with other members if they are not doing the right thing.

ARTICLES FOR NEWSLETTER

Could I please ask those members who attend our demonstrations, maxi-days etc; if you could take some photographs and a brief description of the event so these can be published in the newsletter I am sure all members would be interested in reading about the events of the day. Thank you.....Editor.



CUT OFF DATE FOR ARTICLES

Please note the cut off date for articles to be included in the Newsletter is the last day of the month.

All members are welcome to submit articles for inclusion.

Please send them to the editor;

Email address: augoodtime@hotmail.com

Club Committee

President: Les Coombes
(0408760131)

Vice Presidents: John Kostrzewa and
Paul Collins

Secretary: Jen Coombes

Treasurer: Andrea McFarlane

Public Officer: Sandra Ongley
sandraongley21@gmail.com

Librarian: Rod Brown

Editor: Robert Ryan
ramnet2759@bigpond.com

Webmaster: Les Coombes
wswtpresident@outlook.com

Training Co-Ordinator: Greg Sheath

Trainers: Graham Dawes (JP), Rod
Brown, Ron Devine, Greg Sheath, Rob
Stewart, George Manou, Bob Taylor &
Bob Young.

Shop Manager:

Les Coombes

Equipment Maintenance:

Cindy Kersaitis, (Coordinator)
Manny Farrugia, Dave Matthews,
Graham Dawes (JP), Bob Young, Ron
Devine, Glenn Freeman and George
Manou.

Welfare Officer: Branka Hedges

Membership Secretary: Branka
Hedges 0422 655 994

brankahedges@aol.com

**If you have any suggestions or
information concerning the club
please contact any of the
above committee members.**

Club Hours

Mon-Fri: 8:30am – 4pm....\$5

Friday Nights: 5pm – 9pm....\$3

Saturday Turning

Ladies Day: 2nd Saturday...\$5

Contact: Anna Dawes

0409 460 693

annafdawes@hotmail.com

4th Saturday of Month

8.30am – 4.00pm...\$5

Every member welcome

Contact: Les Coombes

0404 001 562

Club Meetings

Shop items

- ⇒ Ozzie Grit
- ⇒ Friction Polish
- ⇒ Sanding Sealer
- ⇒ Sandpaper
- ⇒ Club Shirts
- ⇒ Dust Jackets
- ⇒ Club Badges
- ⇒ Pen Kits
- ⇒ Pen Blanks – Acrylics
- ⇒ Lazy Susan Bearings
- ⇒ Cheese Knives
- ⇒ Salt Mills
- ⇒ Pepper Mills

**Many more items also
available**



2024

CANBERRA

4 Day Event

Setup 22/5/2024



**A very big thank you
to Michelle Rowland MP,
the Member for Greenway,
for her continued support
which includes the
printing of this newsletter.**



Annual visit to Mt Druitt hospital children's ward



On Good Friday Four ladies took the bowls with Easter eggs to the children's ward at Mt Druitt hospital where we were warmly welcomed by the charge nurse. The families were so appreciative of the easter gifts and the hand made bowls. Robyn also brightened their day by doing some balloon animals.





Skill Development for members and Box making training day

We had a one day training course on design and making an end grain box with normal tools.

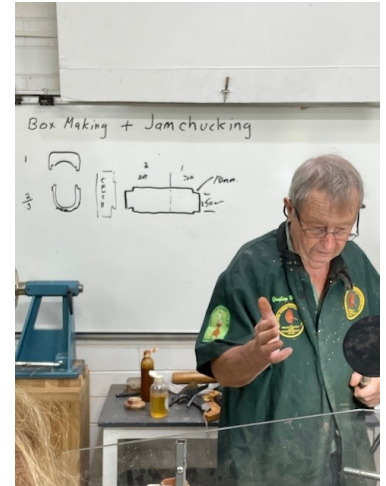
The day was keenly attended by 6 members who wanted to learn how to make a box by using a jam chuck.

All members were able to make a very good end grain box which gave a very nice pop.

An anonymous survey revealed that everyone not only thoroughly enjoyed the day but also learnt additional valuable skills from the dedicated and patient trainers. Participants commented on the inclusivity and collegiality promoted by the knowledgeable and helpful trainers.

Comments further suggested that more of these free short courses for members targeting specific skills would be appreciated for development and confidence of turning skills and projects.

I'd personally like to thank the trainers who freely give their time, mentoring and individual coaching. Thanks to Rod Brown, Don Nixon, Ron Devine, Bob Taylor, George Manou. A special thanks to Graham Dawes for his in-depth, well planned and informative demonstration of the techniques and processes used on the day.



Please note that participants were encouraged to follow safety protocols and as a result no Boxes were injured or harmed during the course. ☑

Gregory Sheath
Training Coordinator



Turning lidded boxes – a workshop participants perspective

Early in March Graham Dawes headed up a group of trainers to deliver a fabulous workshop instructing how to turn a small end grain lidded box. The day covered all steps from roughing the blanks to the finished polished article and I think the other attendees would join me in agreeing it was the most informative day.

Being supplied with Camphor blanks we first turned them to round and cut tenons on both ends. This was followed by parting the box lid from the base, hollowing both the base and the lid, making sure the lid fitted well and finally finishing the top and base using jam chucks.

The tuition given on the day was simply great. Not only did we get detailed instruction for every step for the box, there was also time to ask all questions and get clarification on any point big or small. Personally I was also given lots of tips and advice on techniques. I was able to try out different tools and to improve on skills. I had only heard of “jam chucks” before the day of the workshop and now I think I will be using this techniques again and again.

It was a brilliant day and I would like to thank all the trainers who give their time and expertise to make workshops such as this possible. I look forward to more tuition of this type.

Andrea McFarland



A couple of April Fools Day Pranks for your enjoyment

Subway's [Footlong Fairy Bread](#)

Well known for their footlong sandwiches, Subway teased at the idea of releasing footlong fairy bread, perfectly blending an Aussie classic and their own iconic menu item.

Spotify's [Spotify Matched](#)

Spotify AU & NZ headed to social media to post a photoshopped billboard displaying a new dating app 'Spotify Matched' enticing viewers to find the love of their life based on listening behaviours, to eventually swipe right on a musical soulmate.

Arnott's [Chicken Crimpy Wagon Wheels](#)

Coming off the back of their collaboration with Coles, releasing Shapes-flavoured hot cross buns, it seems Arnott's love the idea of mixing unlikely flavours, such as their new Chicken Crimpies and Wagon Wheel collaboration.

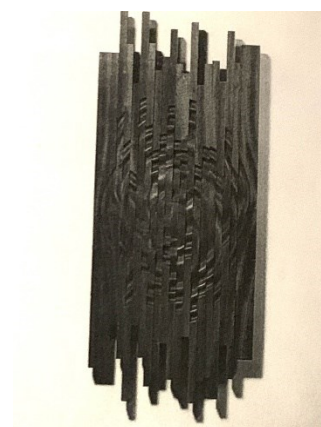
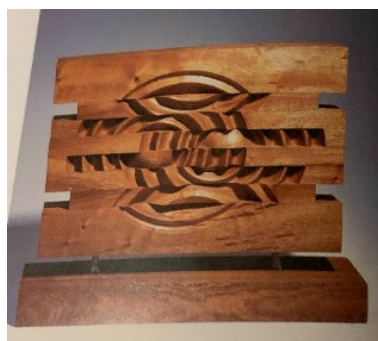
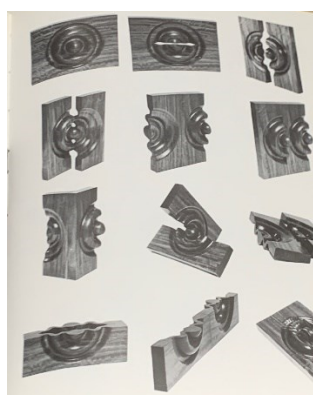
Looking for a Challenge, to create something a little different?

Members are invited
to turn a simple 'rosette' on a square of timber,
cut their creation into lengths which are then mixed-up/
re-organised and glued or dowelled together into a more
sculptural piece.

Maybe a trivet, wall-hanging, or ...



Robyn Mahoney



John Hunnex, Stephen Hogbin

Please bring for display on Maxi Day 19th May.

Hollowing

No matter what size they are; be they end grain or cross grain, hollow forms have to be tackled in a set sequence. The interior has to be treated differently to the interior of a bowl. With a bowl, cuts are made from the rim through to the centre in one pass, but this is not possible with a hollow form, as most of the time it is impossible to see what the tool is doing. The hollowing sequence allows you to keep track of the tool even though you cannot see it.

1. Once you have established the shape of the vessel, establish the depth by drilling a hole down the centre of the workpiece.



2. Cranked hollowing tools are designed so that the tip is in line with the straight part of the shank, and thus the tool rest has to be positioned far enough away from the opening for only the straight part of the shank to sit on the tool rest. The hand acts as a pivot gripping both the tool and the rest.



3. Deal first with the area just inside the opening, making small sweeping cuts from the centre outwards. The final wall thickness must be established and finished at this stage, as it will become too fragile to return to later.



4. When the neck area has been dealt with, remove a central core of waste in the next section to allow room to maneuver the tool, again making small sweeping cuts. Clear the debris frequently; if allowed to build up, it can cause the tool to grab or dig in, resulting in a broken pot.



5. Finish the walls in each section before moving onto the next. The wall thickness should be constantly checked with callipers to avoid the possibility of going through them.



Some Inspiration



Maxi Day Report

Presenter: Dave Giddings

Date: 17 March 2024

Subject: The Epoxy Guru

David gave a very informative session on the use of epoxy resins and why not all epoxies are the same.

David joined the Navy when he was 16yo and developed a taste for sailing boats. He initially encountered epoxy resins whilst working on his wooden sailing boats and was always after better ways and products to repair and restore the boat he loved so much. There was an Australian chemist who was producing better epoxies for Australian conditions under the name of BoatCraftNSW.

David became so involved in the process that he became a presenter for the products that were aimed at the Wooden Boat market. In his travels he was asked time and time again on how epoxies could be used elsewhere and BoatCraftNSW now produce a range of products especially for timber and turning enthusiasts. Below are some points from the day with references used from The Australian Woodworker magazine issues 229 and 230.

Safety with Epoxy

Some cheaper epoxy manufacturers use hardeners with smaller molecules which are highly corrosive, and they evaporate readily. These molecules readily penetrate human skin and cling to clothing and eyes. This leads to skin sensitivity. Breathing the vapours can also quickly lead to sensitivity. Modern Technology epoxy hardeners use much larger and less aggressive molecules in the hardeners with advantages.

Always work in a well ventilated area, wear nitrile gloves, coveralls, safety glasses or face shield and P2 respirator and do not allow others into the vicinity of the work area. Cleaning hands with solvent is also a big NO as it de-fats human skin and readily penetrates the pores of your skin, driving the chemical in through these pores.

Use vinegar to clean yourself and your clothing, and then wash off with hot soapy water. This should completely remove the stickiness.



Deep Casting Epoxy Resin (2:1 mix)

What happens when you heat timber? It releases air and moisture. A casting resin is much thinner than laminating resins and takes much longer to gel and cure. This is to give time for air bubbles to release and a very slow exothermic reaction reduces heat generation. Luci Clear Epoxy Casting Resin can be poured up to 20-30mm thick with air temperature between 22 and 24°C.

Initially add a layer that is 2-3mm in thickness, in case there is a leak in your mould. Moulds should be sealed with “No-more-gaps” as silicon sealants are difficult to remove from your timber. Use a release agent (cooking oil or carnauba wax) on the inside of the mould if needed. Then do deeper pours or multiple pours if the timber is old porous timber with cracks; the reason being, is that it can take ages for air bubbles to release from horizontal cracks.

Remember when you are mixing the epoxy that the resin should be slightly warm (small bursts in the microwave can help, 5-30 seconds depending on volume) and to mix thoroughly including the sides of the mixing cup.. Another tip is to always pour on the timber horizontal surface to ensure it flows over any cracks and fissures and live edges.

Casting resins were developed for the River Table craze and some amazing finishes can be achieved. The future of Deep Casting Resins is in using recycled timber which would have ended up as firewood or considered beyond help especially for turning.

Coating Epoxy Resin (2:1 mix)

Coating resin is a glass like fast gelling epoxy resin specially developed to give you an ultra-high gloss finish of approximately 1 mm thick to show off your work in one coat. It also has additives to help with the release of air bubbles.



Like all epoxy resins there is a lot of technique to ensure the ideal finish. It is important to have your job level before pouring to ensure an even layer of resin. Then cover your work after your pour to prevent dust and bugs settling on the surface. Coating resin can also be used for decoupage and artworks for a crystal clear finish.

Art Epoxy Resin (2:1 mix)

This is the creative resin which is good fun to play with. It is specially formulated to be fairly fast gelling to ensure the pigments do not disperse. It contains special additives that enable it to hold the colours in suspension and keep those pesky bubbles at bay.

The creative aspect of this resin allows you to add epoxy compatible pastes, perlite powders, metal powders and inks to help bring out your creative flair. You can also play with it using a heat gun or by swirling colours into each other. Methylated spirits can be sprayed over the poured resin to create some interesting patterns.

Art Resin is the epoxy resin used to make the seascapes and other artwork you see on bread boards and other artworks.

Epoxy Terminology

Epoxy Resin - This is either the raw epoxy resin or Part A. It can also refer to the resin once it is mixed with the hardener.

Epoxy Hardener - This may be referred to as the curing agent or Part B.

Gel Time - The time it takes for the mixed epoxy to become sticky. It is dependent on the type of epoxy used, ambient air temperature, type of hardener and the thickness of the layer applied.

Green Epoxy- When the epoxy is no longer sticky, but you can still push a fingernail into it. It is dependent on the same criteria as for gel time.

Cured - This is when you can sand the epoxy without clogging sandpaper. This is dependent on the same criteria as for gel time and green epoxy. Do not remove clamps or remove the epoxy from the mould until this stage.

Cure Time - This is a bit like 'how long is a piece of string?'. It is dependent on air temperature, hardener used, thickness of the layer of epoxy in the container or applied, and the type of epoxy used.

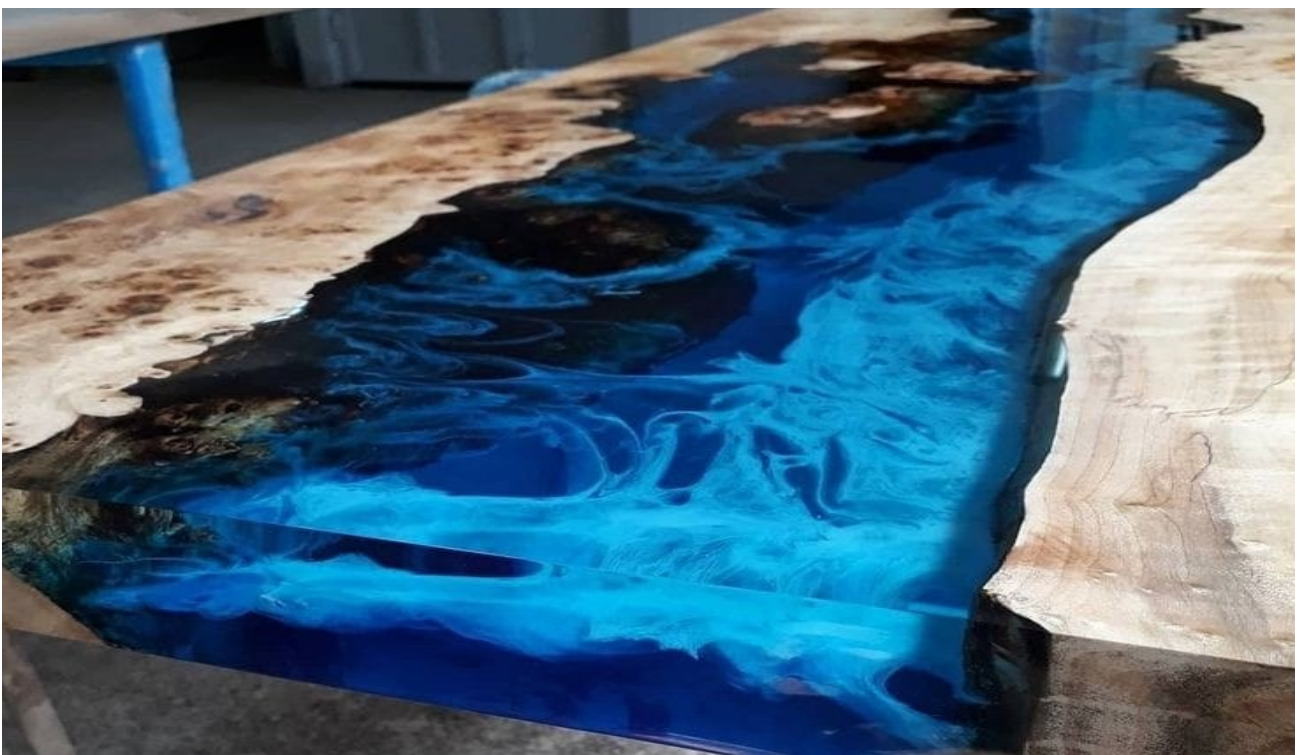
Fully Cured - This is dependent on the ambient air temperature. This can take from 2 or 3 days in summer to a week or longer in winter depending on where you live.

Recoat Time - This is any time from gelling to green. Again this is dependent on the ambient air temperature and type of resin & hardener used.

Non-Yellowing Hardener – Most hardeners cause cured epoxy to yellow off over time when exposed to UV (sunlight but also some artificial lighting). Bote-Cote has a genuine non-yellowing hardener. This is achieved by using more expensive additives than those found in standard or fast hardeners.

UV Inhibitors - These provide resistance to prolonged exposure to UV by absorbing UV photons. This process "uses up" the UV inhibitor over time. Once the inhibitors are depleted the epoxy will start to yellow off.

UV Resistance - No epoxy is completely UV resistant. If your 'pride-n-joy' is a clear finish that will be exposed to sunlight, it needs overcoating with a two-pack clear coating such as Aquacote water-based non-yellowing polyurethane which provides strong UV resistance for a number of years.





SHOW & TELL





HAPPY BIRTHDAY

Member #	Title	First Name	Last Name
2162	Mr.	Peter	Bland
2301	Mr.	Ronald	Devine
2845	Mr.	Lindsay	McEwan
3600A	Mrs.	Lynnette	Young
3624A	Mrs	Jeanette	Hitchcock
3724	Mrs.	Lois	Janik
3882	Mr.	Glenn	Freeman
3901	Mr.	Matthew	Keen
4017 S	Ms.	Isabella	Farrugia
4043	Mr.	Muhittin	Yaroglu
4058	Ms.	Sharon	Danca

Take a look at our *** **NEW** *** website

www.westernsydneywoodturners.com.au

Please feel free to leave a comment



TREND TIMBERS

SPECIALIST IN FINE WOODS

Established 1969 A third generation timber family



YOUR 1 STOP WOODWORKING SHOP IN NSW

Over 100 species
Select timbers for
Cabinetmaking
Furniture
Joinery
Woodturning
Carving

TREND TIMBERS

15 Railway Road North,
Mulgrave NSW 2756
TELEPHONE: 02 4577 5277
FAX: 02 4577 6846

Email: sales@trendtimbers.com.au
www.trendtimbers.com.au

Opening Hours
ALL WELCOME!!
Mon- Fri 8am-4pm
Sat 8am-11.30am
Closed
Public Holidays &
Long Weekends



Members Welfare Report

The welfare of members and their families is important to our club. Please let me know if you or someone you know is unwell, or worse still, no longer with us.

Get Well Cards have been sent to the following Members and/Or Partners

Mrs Cindy Kersaitis

We wish everyone a Speedy Recovery.

A Sympathy card was also sent to:

Nobody

Let me know at my email address: **brankahedges@aol.com**

or

Text me on: **0422 655 994**

If anyone has been missed, be assured that the good wishes and sympathies of our club are with you and your family.

Stay Safe ... Branka Hedges....Welfare Officer



BUNNINGS BBQ

Volunteers Needed

Saturday 20th April: 8am to 4pm

If you can help out for some or all of the day, please put your name on the board at the club.

As of the date of publication, there are no volunteers.

Future dates

June—Saturday 15/6/2024

August— Saturday 17/8/2024

October— 19/10/2024

WORK SMARTER, NOT HARDER!



Dust Collection is a crucial part of any serious woodworker's garage or workshop. Hare & Forbes Machineryhouse range of cyclone dust collection units, wall-mounted extraction kits, and accessories will not only help to keep your work area clean but also keep your machines working correctly and your air cleaner to breathe.

PVC Dust Hose

- Ø100mm (4") Dia.
- Supplied 3 or 6 meter lengths



3 Metre

\$49.50 (W3981)

6 Metre

\$93.50 (W3982)

Dust Vacuum Wand - DVW-4

- Connects to Ø100mm dust hose
- Kit includes:
 - Adjustable dust wand handle
 - Quick connect blast gate
 - Floor sweep intake
 - Dust wand handle with bristles



\$99 (W344V)

GREAT VALUE

Wall Mounted Wood Dust Extraction Kit - DCK-200W

- 8 x 914mm lengths of Ø100mm clear tubing
- 3 x 100mm wall mount blast gates
- 3 x 100mm 45° elbows • 2 x 100mm 90° elbows
- 2 x 100mm "Y" connectors • 16 x 100mm Joiners
- 10 x Wall brackets • 4 x 100mm hose clamps



NEW RELEASE

\$352 (W3447)

Wall Mounted Wood Dust Extraction Accessory Kit - DCK-100W

- 2 x 100mm 90° elbows
- 2 x 100mm "Y" connectors
- 3 x 100mm wall mount blast gates
- 1 x Floor sweeping attachment
- 10 x Wall mounting brackets
- 16 x Hose clamps



NEW RELEASE

\$132 (W3445)

These items are not pictured in the main image

Wood Dust Accessory Kit - DCK-2

- 2 x (3m x Ø100mm hose)
- 10 x hose clamps
- 2 x shut-off valves
- 1 x 558mm wide floor sweeper, table saw hood, universal dust hood, 150mm dust hood & "Y" connector



\$143 (W344)

GREAT VALUE

PACKAGE DEAL

SAVE \$121 OFF RRP

Dust Collector & Cyclone Separator - DCC-310

- 1 x DC-3 Dust Collector 240V (W394)
- 1 x CDS-2/3 Cyclone Separator (W316)
- 1 x FC-10 Filter Cartridge (W328)
- 1 x DCK-2 Dust Accessory Kit (W344)

\$1,287 (K047)



View and purchase these items online: www.machineryhouse.com.au/WTN2404

HARE & FORBES 100% Australian Owned Est. 1930
MACHINERYHOUSE
 "Setting the standard for quality and value"

SYDNEY
 (02) 9890 9111
 1/2 Windsor Rd, Northmead

BRISBANE
 (07) 3715 2200
 625 Boundary Rd, Coopers Plains

MELBOURNE
 (03) 9212 4422
 4 Abbots Rd, Dandenong

PERTH
 (08) 9373 9999
 11 Valentine St, Kewdale

Specifications and prices are subject to change without notification. Offer is valid till the 17th of March.

THE BACK PAGE

Item 51

Mounting Methods

April 2024

Different Drives and Centers

Traditional spur drive and removable center cup live center that is normally supplied with a new machine.



The cup live centre can be used in 2 ways either with or without the centre point fitted. With the point fitted locating the centre of the work piece and enabling the round cup design to grip the face holding the 2 pieces of segmented wood together or just added grip.

Without the point fitted in special occasions where the corner etc of a cube can be located and held in positioned and support.

“Steb” Centres.



Stebbs are of special design where the centre point is spring loaded and collapses when pressure is applied allowing the saw tooth design to grip for drive, also again for the purpose of holding segmented pieces together with no pressure on the joint possibly causing separation.

Note. As in all professions there are many and varied opinions and ways of doing things. This is true of wood turning. These articles are the results of my reading article publications. Eddie C