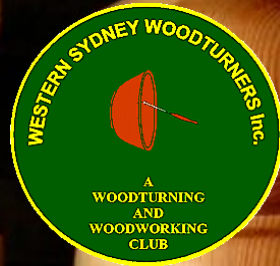


WesTurn News

The official organ of Western Sydney Woodturners Inc.

Issue: 279



September 2024

Western Sydney Woodturners Inc

Twin Gums Retreat, Corner Northcott Road and Diane Drive

PO Box 4008, Lalor Park NSW 2147

Web Site: www.westernsydneywoodturners.com.au

President's Report September 2024

From my perspective this report will be interesting, considering that I'm currently in Waramungu NT enroute to Darwin and haven't been at the Club since we left about 2-3 weeks ago (lost track of time). Last I heard all was well and in the absence of any urgent communication from anyone, I assume all is still well. The big band saw blade that was put on just before I left hardly lasted any time at all, but I suspect it wasn't actually a bimetal blade as it was supposed to be. I believe Eddie has sourced a different supplier and by the time this goes to print I imagine he will have purchased a new bimetal blade that's ripping through the wood like a champion.

It was with such sadness that I heard of the passing of Bob Taylor. When I first joined the Club, he stayed right by my side throughout the entire training course, guiding me with such patience. My regular turning day became a Wednesday, same as Bob, and he continued to patiently assist me whenever I called. His enthusiasm, skill, generosity, and good company will be sadly missed by all of us.

On a brighter note, when we leave Darwin, Ken and I are heading down through the centre toward Adelaide then home. We will be home on the weekend after the long weekend. Keep smiling and stay happy! See you In October.

Cindy

SAFETY MATTERS

A REMINDER ABOUT WORKSHOP SAFETY

We must all keep in mind the importance of WORKSHOP SAFETY. Please THINK and ACT responsibly at all times. It is up to all of us to fulfill our commitment by wearing at all times;

- ◇ Dust masks
- ◇ Protective glasses
- ◇ Suitable clothing
- ◇ Footwear
- ◇ Ear protection

It does not hurt to discuss safety with other members if they are not doing the right thing.

ARTICLES FOR NEWSLETTER

Could I please ask those members who attend our demonstrations, maxi-days etc.; if you could take some photographs and a brief description of the event so these can be published in the newsletter I am sure all members would be interested in reading about the events of the day. Thank you.....Editor.



CUT OFF DATE FOR ARTICLES

Please note the cut off date for articles to be included in the Newsletter is the last day of the month.

All members are welcome to submit articles for inclusion.

Please send them to the editor;

Email address: augoodtime@hotmail.com

Club Committee

President: Cindy Kersaitis
(0408760131)

Vice Presidents: John Kostrzewa and
Les Coombes

Secretary: Mike Grima

Treasurer: Andrea McFarlane

Public Officer: Sandra Ongley
sandraongley21@gmail.com

Librarian: Rod Brown

Editor: Robert Ryan
augoodtime@hotmail.com

Webmaster: Les Coombes
Lescoombes@yahoo.com.au

Training Co-Ordinator: Greg Sheath

Trainers: Graham Dawes (JP), Rod
Brown, Ron Devine, Greg Sheath, Rob
Stewart, George Manou, Bob Young,
Cindy Kersaitis, Bob Taylor & Robyn
Mahoney

Shop Manager:

Les Coombes

Equipment Maintenance:

Eddie Catford (Coordinator), Cindy
Kersaitis, Manny Farrugia, Dave Mat-
thews, Graham Dawes (JP), Bob
Young, Ron Devine, Glenn Freeman
and George Manou.

Welfare Officer: Viv Tabone

0414557776

mrspaarky1@bigpond.com

Membership Secretary: Viv Tabone

Catering Officer—team effort

Maxi Days—Don Nixon & others

If you have any suggestions or
information concerning the club
please contact any of the
above committee members.

Club Hours

Mon-Fri: 8:30am – 4pm....\$5

Friday Nights: 5pm – 9pm....\$3

Saturday Turning

Ladies Day: 2nd Saturday...\$5

Contact: Robyn Mahoney

0411 845 776

robynmahoney@hotmail.com

4th Saturday of Month

8.30am – 4.00pm...\$5

Every member welcome

Contact: Les Coombes

0404 001 562

Maxi Day – 3rd Sunday

10:30am—2:00pm...\$6

(Lunch included)

Club Meetings

Shop items

- ⇒ Ozzie Grit
- ⇒ Friction Polish
- ⇒ Sanding Sealer
- ⇒ Sandpaper
- ⇒ Club Shirts
- ⇒ Dust Jackets
- ⇒ Club Badges
- ⇒ Pen Kits
- ⇒ Pen Blanks – Acrylics
- ⇒ Lazy Susan Bearings
- ⇒ Cheese Knives
- ⇒ Salt Mills
- ⇒ Pepper Mills

**Many more items also
available**



**A very big thank you
to Michelle Rowland MP,
the Member for Greenway,
for her continued support
which includes the
printing of this newsletter.**

Take a look at our *** **NEW** *** website

www.westernsydneywoodturners.com.au

Please feel free to leave a comment

ATTENTION ALL MEMBERS

Over the last 2/3 weeks the club has experienced an unusual amount of problems with several machines.

On all occasions it has been due to abuse, or not knowing how to operate the machine correctly and consequently it results in damage to the machine.

This has to stop, starting from now, there is no hard wood (iron bark, railway sleepers, recycled piers, wood loaded with vegetation, sand, stone) just to mention a few, that are allowed on the premises let alone to be used in and on club machines. **Repeating, do not bring these timbers onto the premises, if you do there will be consequences.** If you are unsure ask the Convener.

Some of the damage experienced:

The Saw Stop had tripped the electrical system. It took time and several phone calls to find out what had happened and how to overcome the situation in the future.

The drum sander is forever having the main belt damaged and clogged with glue, sap, paint, varnish, lacquer etc; this is abuse whichever way you want to look at it. Also the belt feeder was damaged shortly after it was purchased but has survived until recently where it is now approximately 50mm narrower. How can something last well over 12 months then have damage in the same area?

In this case the table had lost adjustment allowing the mat to drift to the side, but that doesn't mean you keep operating the machine until it destroys something. Stop the machine before it causes damage culminating in expensive repair costs.

The Jointer was used without opening the dust chute causing the machine to block up and saw dust to feed back over the cutters. Again it doesn't matter how you look at it, this is abuse and negligence and not understanding how this machine operates.

Not knowing how to operate this machine is an accident waiting to happen, it can be and is, a very dangerous machine.

The Thicknesser, for a long time has been giving trouble, now we know the reason why. We found out that this machine is subject to the same problems as the drum sander in as far as the main feed roller is subject to being clogged with glue, sap, paint, varnish, lacquer etc; do not put these type of timbers through the thicknesser, if you do, this will be considered as abuse and it is

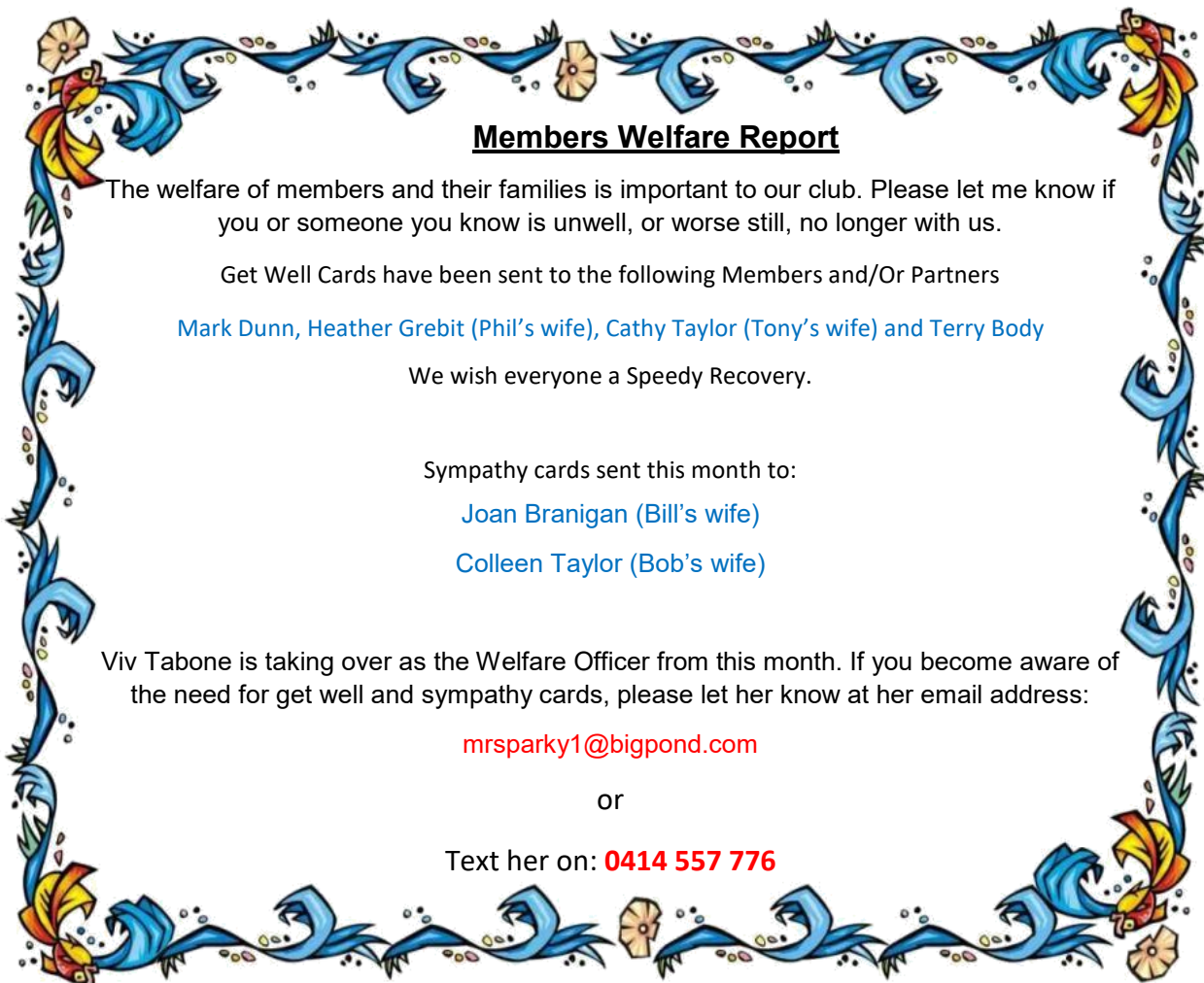
abuse, doesn't matter which way you want to look at it. When these parts get clogged the machine stops feeding properly, again it's an operator problem.

Band Saws have been a problem with blades, after along term experimentation with blades we are at the stage where we have decided on the best for our use. Both machines have been fitted with the new blades and we expect them to far outlast any we have used in the past. **BUT**, this can only happen if the machines are not abused ie, **NO HARDWOOD IS TO BE CUT, NO CIRCLES ARE TO BE CUT (ALL CUTS TO BE STRAIGHT ON SQUARE BLOCKS TO FORM THE SHAPE OF A CIRCLE).** Members caught abusing the Bandsaws will be banned from using them.

The club, until now, has absorbed the cost but doesn't know for how much longer we can, so on that basis we need the co-operation of all members to treat the machines as they would their own and if they see any member doing the wrong thing they bring it to the attention of the Convener of the day.

The door entry fee **DOES NOT** entitle you to abuse the club machines and facilities.
If you don't use your own machines to prepare a work piece **DON'T** bring it to the club.
This has the full support of the executive.

Eddie C



Members Welfare Report

The welfare of members and their families is important to our club. Please let me know if you or someone you know is unwell, or worse still, no longer with us.

Get Well Cards have been sent to the following Members and/Or Partners

Mark Dunn, Heather Grebit (Phil's wife), Cathy Taylor (Tony's wife) and Terry Body

We wish everyone a Speedy Recovery.

Sympathy cards sent this month to:

Joan Branigan (Bill's wife)
Colleen Taylor (Bob's wife)

Viv Tabone is taking over as the Welfare Officer from this month. If you become aware of the need for get well and sympathy cards, please let her know at her email address:

mrsparky1@bigpond.com

or

Text her on: **0414 557 776**

This page reserved for Vale for Bob Taylor
It will be updated in the on line edition once
the article is received.

On line newsletters can be viewed at:

[Newsletters \(westernsydneywoodturners.com.au\)](http://westernsydneywoodturners.com.au)

Jam Chucks and Other Holding Devices

Inland Wood Turners Demonstration by Richard Spencer

October, 2016

This handout is designed to accompany the demo and give you specifics on the tools and jam chucks shown in the demo.

Shop made holding devices can enable you to turn complicated pieces that otherwise would be impossible using standard, off the shelf, chucks. This demo is intended show some of the jam chucks and other holding devices I have used over the years to either hold a difficult piece while turning or to hold a piece that must be reworked after I have cut off a tenon.

First, jam chucks and holding devices can be mounted either on the head stock or the tail stock. So we will cover them separately.

Tail stock jam chucks and holding devices.



Most jam chucks on the tail stock are attached to a live center with 3/4" X 10tpi like the one shown here. They are not cheap but their versatility makes them well worth the price. I don't remember where I got this one or what I paid for it and I can't find it online.

There are several on amazon for around \$120.00. One from SAVANNAH Heavy Duty Dual Bearing Live Center 7559
One from Robust Woodturning Live Center, #2 MT

Penn State has on for less. Live Tailstock Chuck Adapter: 1 in. x 8tpi - #2MT Shaft Item #: LTCA18 -- \$34.95. This one is designed to hold a regular chuck with 1" X 8tpi but it can be used for shop made jam chucks by changing the tap to 1" X 8tpi from the 3/4" X 10tpi that I have been talking about.

Note: I have never used any of these listed and I am not endorsing any of them.



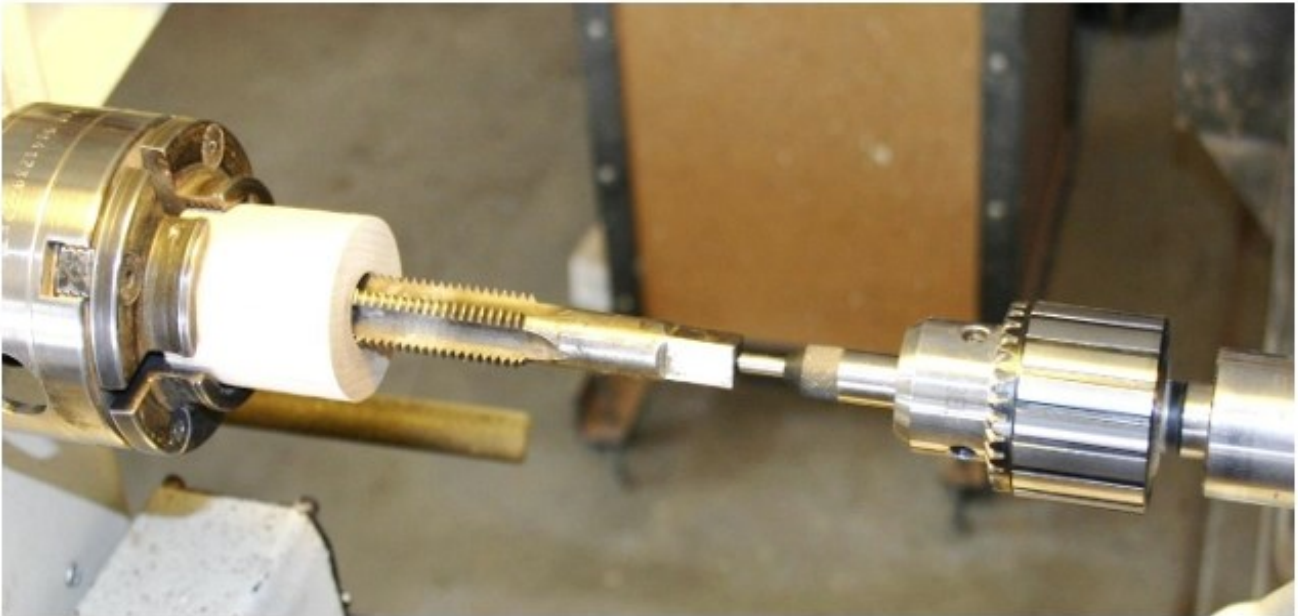
The first step in making a tail stock jam chuck is to determine what it will accomplish and what size it needs to be.

Once you have a blank mounted to a chuck and the end flat, you drill and tap the end to match your live center. In my case that would be a 21/32" drill and a 3/4" X 10tpi tap.

Once the hole is drilled to the proper depth you can tap the hole on the lathe using a tap guide.



The tap guide is placed in the same drill chuck you just used to drill the hole. It has a spring loaded center point that goes in the hole in the end of the tap. The setup looks like this.



The tap is in the hole, you bring up the tail stock to center the rear of the tap and turn the tap with an adjustable wrench.

There are several tap guides on Amazon. This is one of them:

[Brown & Sharpe 599-792-30 Adjustable Spring Tensioned Tap Guide](#)

\$14.70

Once you have a hole tapped in the blank you need to attach it to the head stock. I do this with a spindle adapted which is 1 1/4" X 8tpi on the female side and 3/4" X 10tpi on the male side. It looks like this:



This is not a standard size so I had one made by: Best Wood Tools for about \$65.00. Their website is: bestwoodtools.com

With the blank attached to the spindle adapter you just turn whatever size and shape jam chuck you need. When it is finished you remove it from the spindle adapter and you are ready to mount it to the live center threads in the tail stock.

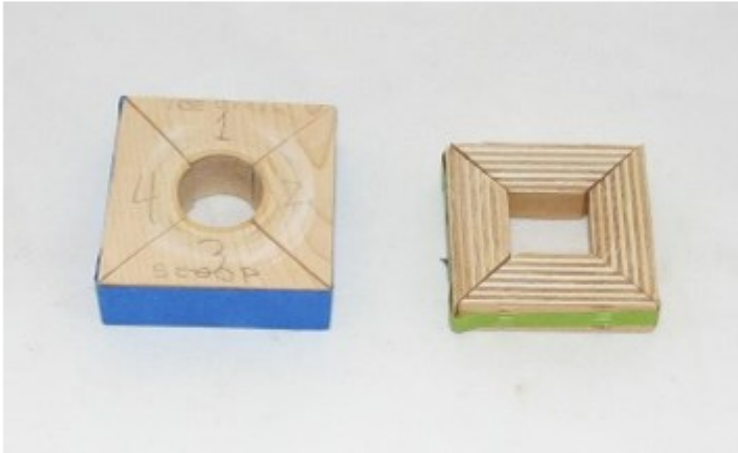
Remember, if you have a 1" X 8tpi spindle you can use the live center in that size and make jam chucks cheaper than I could.

They don't make that live center in a 1 1/4" X 8tpi model.

Head Stock Jam Chucks and Holding Devices

There are times when your work piece will not fit in any of the chucks you own and you will have to construct a shop made fixture to hold that piece. These fixtures range from the very simple to the very complicated.

When turning small finales you can easily fabricate a device like these one to hold your work.



You can build them to hold round or square stock. They fit in the jaws of a regular chuck and hold the work very well. I make the outside 2 1/2" square and the inside to fit the work piece. The round one I make from 2 1/2" square stock 3/4" thick I put it in a chuck on the lathe and drill a hole the size that I need. Then I go to my table saw and cut it corner to corner then put the tape around it to keep the pieces together. The square one is 3/4" Baltic Birch plywood. I miter the inside a little bit

smaller than my stock and put the tape to hold the pieces together.

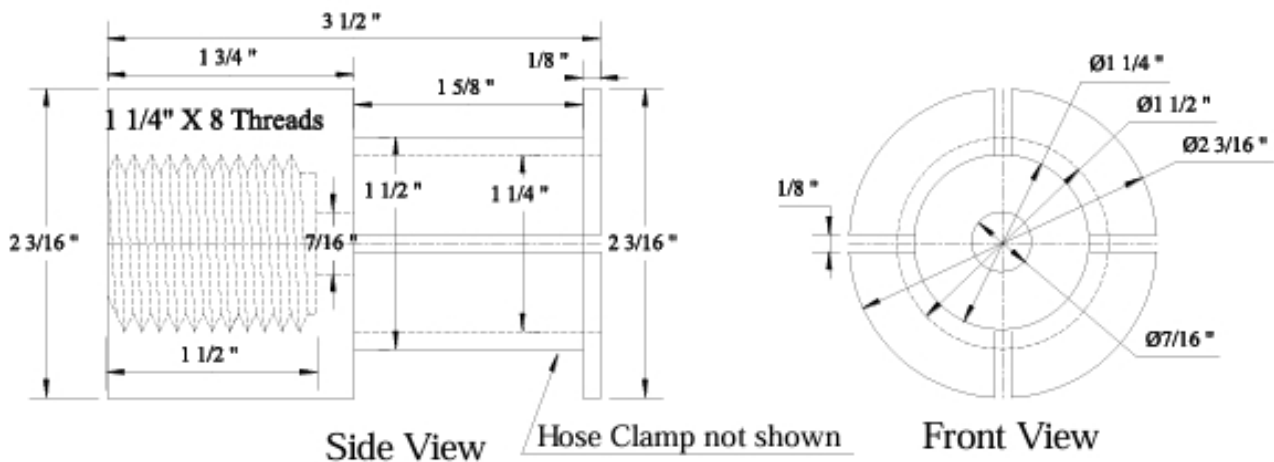
I turn a lot of spheres and it is not easy to clean up the last place you parted off the sphere. I built several collet chucks to hold various sizes of spheres for the final shaping and sanding.



This is built very much like the tail stock jam chucks except that you drill and tap the end to match you head stock spindle. The collet end is sized to fit a specific diameter and then "split" with a table saw and uses a hose clamp for tension.

Below is a drawing of how I build collet chucks.

1 1/4" Collet Chuck



When making a spigot to fit a bush, ferrule or any hole and you have made it to small and not a tight or press fit then lightly massage some glue to the undersize spigot until it is nearly dry then roll the spigot in very fine sanding dust. This will give you a buildup and allow you to refine the spigot to the correct diameter.

Also, if you are making a handle for a tool and it is slightly undersize either fix it as above or do what manufacturers of tool sets do and that is punch the ferrule with a center punch leaving a dent in the ferrule and tightening it to the wood underneath.

Eddie C

Joke of the Month

A cab driver reaches the pearly gates. St. Peter looks him up in his Big Book and tells him to pick up a gold staff and a silk robe and proceed into Heaven.

Next in line is a preacher. St. Peter looks him up in his Big Book, furrows his brow and says, "OK, we'll let you in, but take that cloth robe and wooden staff."

The preacher is shocked and replies, "But I am a man of the cloth. You gave that cab driver a gold staff and a silk robe. Surely I rate higher than a cabbie!"

St. Peter responds matter-of-factly, "This is Heaven and up here, we are interested in results. When you preached, people slept. When the cabbie drove his taxi, people prayed."

Oneway Coring System



The well-known bowl turner, Glenn Lucas jokes about the fact that the day he cored his first bowl was the best day of his life, ahead of his children's births and his marriage.

What is a coring system?

Well, when the outside of a medium to large bowl is roughed turned, instead of just shaving out the center, other bowls can be extracted from the larger bowl interior.

From one bowl, two, three, even four or more bowls can emerge. Not only is this amazing, but it also saves wood, produces fewer shavings on the floor and is a thrill to do.

If your woodturner loves making bowls this can be a signature gift. On the other hand if they only occasionally make very small bowls, then this may not be the right gift.

A bowl around 8-10" across can be cored to yield another smaller bowl from within. So the question to ask yourself is, does my woodturner make bowls regularly and of a size bigger than an ice cream dish? If so, this might be the ticket.

OK, here are the details you will need to gather before making this purchase. The Oneway coring system needs to be sized to fit the lathe properly.

You will need to know three things to get the right parts for the Oneway coring system:

- ◆ The distance from the center of the headstock to the bedways or rails
- ◆ The space between the lathe bedways or rails
- ◆ What are the average sized bowls your turner turns

There are a couple items that need to be purchased to both make this system complete and matched to the lathe perfectly.



Headstock Height

Step 1 – Base Unit Size

Measure the distance from the center of the headstock to the top of the rails

Six inches, purchase [Oneway Easy-Core 12" Mini Coring System*](#)

Eight inches, purchase [Oneway Easy-Core 16" Base Set](#)

10 inches, purchase [Oneway Easy-Core 20" Base Set](#)

12 inches, purchase [Oneway Easy-Core 24" Base Set](#)

Step 2 – Mounting Plate

Measure the distance or gap between the bedways or rails.

1-1/2" space between rails, purchase [Oneway Clamp Block 1-1/2" Gap](#)

1-7/8" space between rails, purchase [Oneway Clamp Block 1-7/8" Gap](#)

2-1/2" space between rails, purchase [Oneway Clamp Block 2-1/2" Gap](#)

*At this point the Oneway Easy-Core 12" Mini Coring System is complete, no other items are needed other than a [sharpening jig](#) to sharpen the blade.



Step 3 – Knife Sets

The size and number of knife sets depend on the size of bowls being cored. One knife set is required to cut a bowl at the indicated size. You can always add more knife sets later. I use two knife sets to core 9" and 11-1/2" bowl out of 14" or larger initial bowls and they work great.

*Please note – the knife set is included with the 12" Mini Coring System

[Oneway Easy-Core 9" Knife Set](#)

[Oneway Easy-Core 11-1/2" Knife Set](#)

[Oneway Easy-Core 13" Knife Set](#)

This article courtesy of:

[Gifts For Woodturners - 50 Ideas To Inspire Woodturning - \(turnawoodbowl.com\)](#)

Step 4 – Accessories

[Blade sharpening jig](#) (this makes it possible to hold the small cutting blade by hand at the grinder for sharpening)

[Replacement Easy-Core Cutter](#) (this is not necessary, but nice to have available if a cutting blade gets lost)

You may be wondering if your woodturner already has one of these. There is about a 99.99% chance you would have heard exasperated thrill coming from the wood shop if they already have the Oneway coring system.

If you're still not sure, ask your woodturner this question, "is there any way to make another bowl from the material inside that bigger bowl?" Their answer will most likely tell you all you need to know.

If your turner has the Oneway coring system and has used it successfully without sharing this news with you, you probably need to seek couples counseling or he or she needs to see someone about learning to share emotions and communicate better. It's that good!

BUNNINGS BBQ

For a change it was great day, the sun was out, the travellers that had been broken down for the last 3/4 months were now working, consistent customers all day, all obviously resulted in a very good return for our efforts, very surprising and appreciated as the last two before this was a little disappointing and demoralising.

A special thank you to the male and lady members who attended on the day and also those who helped cutting the onions in preparation. every little bit helps particularly when we can allow some helpers to leave early and still cope.

We have one more for this year let's hope it is as big of a successes as this turned out to be.

If you can find time to help at the next one that also would be appreciated. Eddie C.



HINT

Your body is Precious
It needs you
to look after it



TIP

Use these



THINK AND ACT SAFETY

Eddie C



HAPPY BIRTHDAY

Member #	Title	First Name	Surname
879	Ms.	Anna	Dawes
3597A	Ms.	Christine	Hardy
3601A	Ms.	Leonie	Singh
3655	Mr.	Malcolm	Harrild
3818	Mr.	Allan	Logan
3885	Mr.	Angelo	Cella-Sartor
4021	Dr.	Silvana	Sarmiento-Leite
4050	Mrs	Kathleen	Lipscomb






TREND TIMBERS

SPECIALIST IN FINE WOODS

Established 1969 A third generation timber family



YOUR 1 STOP WOODWORKING SHOP IN NSW

Over 100 species
Select timbers for
Cabinetmaking
Furniture
Joinery
Woodturning
Carving

TREND TIMBERS
15 Railway Road North,
Mulgrave NSW 2756
TELEPHONE: 02 4577 5277
FAX: 02 4577 6846
Email: sales@trendtimbers.com.au
www.trendtimbers.com.au

Opening Hours
ALL WELCOME!!
Mon– Fri 8am-4pm
Sat 8am-11.30am
Closed
Public Holidays &
Long Weekends

WORK SMARTER, NOT HARDER!



Dust Collection is a crucial part of any serious woodworker's garage or workshop. Hare & Forbes Machineryhouse range of cyclone dust collection units, wall-mounted extraction kits, and accessories will not only help to keep your work area clean but also keep your machines working correctly and your air cleaner to breathe.

PVC Dust Hose

- Ø100mm (4") Dia.
- Supplied 3 or 6 meter lengths

1



3 Metre \$49.50 (W3981) **6 Metre** \$93.50 (W3982)

Dust Vacuum Wand - DVW-4

- Connects to Ø100mm dust hose
- Kit includes:
 - Adjustable dust wand handle
 - Quick connect blast gate
 - Floor sweep intake
 - Dust wand handle with bristles

2

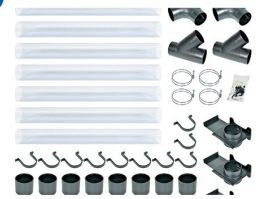


\$99 (W344V) **GREAT VALUE**

Wall Mounted Wood Dust Extraction Kit - DCK-200W

- 8 x 914mm lengths of Ø100mm clear tubing
- 3 x 100mm wall mount blast gates
- 3 x 100mm 45° elbows • 2 x 100mm 90° elbows
- 2 x 100mm "Y" connectors • 16 x 100mm Joiners
- 10 x Wall brackets • 4 x 100mm hose clamps

3



NEW RELEASE
\$352 (W3447)

Wall Mounted Wood Dust Extraction Accessory Kit - DCK-100W

- 2 x 100mm 90° elbows
- 2 x 100mm "Y" connectors
- 3 x 100mm wall mount blast gates
- 1 x Floor sweeping attachment
- 10 x Wall mounting brackets
- 16 x Hose clamps



NEW RELEASE \$132 (W3445)

Wood Dust Accessory Kit - DCK-2

- 2 x (3m x Ø100mm hose)
- 10 x hose clamps
- 2 x shut-off valves
- 1 x 558mm wide floor sweeper, table saw hood, universal dust hood, 150mm dust hood & "Y" connector



\$143 (W344) **GREAT VALUE**

These items are not pictured in the main image

PACKAGE DEAL

Dust Collector & Cyclone Separator - DCC-310

- 1 x DC-3 Dust Collector 240V (W394)
- 1 x CDS-2/3 Cyclone Separator (W316)
- 1 x FC-10 Filter Cartridge (W328)
- 1 x DCK-2 Dust Accessory Kit (W344)

\$1,287 (K047)

SAVE \$132 OFF RRP



4

View and purchase these items online: www.machineryhouse.com.au/WTN2409



HARE & FORBES 100% Australian Owned Est. 1930
MACHINERYHOUSE
"Setting the standard for quality and value"

Specifications & Prices are subject to change without notification.

NOW OPEN

ADELAIDE

(08) 9373 9969

Unit 11/20 Cheltenham Parade Woodville SA 5011

08_WTN_010924

THE BACK PAGE

Item 56

Mounting Methods

September 2024

Double Sided Tape



This method is not uncommon and in many cases is the preferred method when doing inside, outside turning as it allows the four pieces to be even and equal when they are turned around.

However as with all methods of mounting it comes with some important necessary steps to be taken.

The most important is the selection of tape. It MUST be of very good quality and brand name, and NOT the type that has a soft center filling as this can have disastrous consequences.

It MUST be the thin type like that of sticky tape.

The surfaces of both sides MUST be clean, dust and oil free.

The surfaces of both sides MUST be level.

It is also important that a Minimum of 70 percent of the area is covered with tape.

It is not necessary but ideal to clamp the pieces overnight, or at least 1 hour before turning. Clamping is important when using this method.

It is not unusual to use this method when applying a piece of waste to finish the bottom of work piece or a temporary mounting point to do polishing and other things.

Note. As in all professions there are many and varied opinions and ways of doing things. This is true of wood turning. These articles are the results of my reading article publications. Eddie C