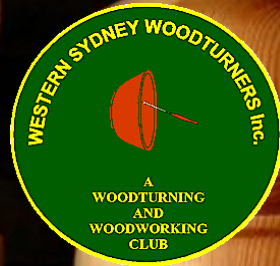


# WesTurn News

The official organ of Western Sydney

Issue: 283



February 2025

**Western Sydney Woodturners Inc**

**Twin Gums Retreat, Corner Northcott Road and Diane Drive**

**PO Box 4008, Lalor Park NSW 2147**

**Web Site: [www.westernsydneywoodturners.com.au](http://www.westernsydneywoodturners.com.au)**

## **President's Report February 2025**

I hope you all had a wonderful Christmas break! It was very remiss of me not announcing last year that Les had stepped down as Vice President. I want to thank you Les for staying on and helping me transition to the President's role and for looking after things in my absence – your assistance was very much appreciated.

The Committee members unanimously endorsed Robyn Mahoney to fill the role and she was formally voted in as Vice President at the subsequent monthly meeting. Congratulations Robyn, and please accept my apologies for not making the announcement earlier.

Thanks to Ian Frith for volunteering to restock the kitchen and cleaning supplies as needed. I can continue to keep the shop stocked, and you should notice that the pen kits and a few other items have been stocked up recently. Unfortunately, I haven't had any volunteers to help with catering or Maxi days, so there will be no catering and no Maxi days for the time being.

Dates for the Bunnings BBQs, Craft Alive shows and Training courses have been put up on the notice board, and are written on the white board. There is also a sign up sheet for demonstrating at the Trend Timbers open weekend in April. There is some overlap with these activities, but they are all important for different reasons and some members prefer volunteering for some and not others (which is perfectly OK).

Don't forget, the monthly meeting is 7pm on the second Tuesday of every month except January. All members are welcome.

# SAFETY MATTERS

## A REMINDER ABOUT WORKSHOP SAFETY

We must all keep in mind the importance of WORKSHOP SAFETY. Please THINK and ACT responsibly at all times. It is up to all of us to fulfill our commitment by wearing at all times;

- ◇ Dust masks
- ◇ Protective glasses
- ◇ Suitable clothing
- ◇ Footwear
- ◇ Ear protection

It does not hurt to discuss safety with other members if they are not doing the right thing.

## ARTICLES FOR NEWSLETTER

Could I please ask those members who attend our demonstrations, maxi-days etc.; if you could take some photographs and a brief description of the event so these can be published in the newsletter I am sure all members would be interested in reading about the events of the day. Thank you.....Editor.



## CUT OFF DATE FOR ARTICLES

Please note the cut off date for articles to be included in the Newsletter is the last day of the month.

All members are welcome to submit articles for inclusion.

Please send them to the editor;

Email address: [augoodtime@hotmail.com](mailto:augoodtime@hotmail.com)

## Club Committee

**President:** Cindy Kersaitis  
(0408760131)

**Vice Presidents:** John Kostrzewa and

Robyn Mahoney

**Secretary:** Mike Grima

**Treasurer:** Andrea McFarlane

**Public Officer:** Sandra Ongley  
sandraongley21@gmail.com

**Librarian:** Rod Brown

**Editor:** Robert Ryan  
augoodtime@hotmail.com

**Webmaster:** Les Coombes  
Lescoombes@yahoo.com.au

**Training Co-Ordinator:** Greg Sheath

**Trainers:** Graham Dawes (JP), Rod Brown, Ron Devine, Greg Sheath, Rob Stewart, George Manou, Don Nixon,, Bob Young, Cindy Kersaitis & Robyn Mahoney

**Shop Manager:**

Cindy Kersaitis

**Equipment Maintenance:**

Eddie Catford (Coordinator), Cindy Kersaitis, Manny Farrugia, Dave Matthews, Graham Dawes (JP), Bob Young, Ron Devine, Glenn Freeman and George Manou.

**Welfare Officer:** Viv Tabone

0414557776

mrspaarky1@bigpond.com

## Club Hours

**Mon-Fri:** 8:30am – 3pm....\$5

**Friday Nights:** 5pm – 9pm....\$5

Please note: these hours are approximate and the Club will not remain open when fewer than three members are present

### Saturday Turning

**Ladies Day:** 2<sup>nd</sup> Saturday...\$5

**Contact:** Robyn Mahoney

0411 845 776

robymahoney@hotmail.com



**A very big thank you to Michelle Rowland MP, the Member for Greenway, for her continued support which includes the printing of this newsletter.**

## Club Meetings

7pm second Tuesday of each month except December.

All members welcome

## Shop items

- ⇒ Ozzie Grit
- ⇒ Friction Polish
- ⇒ Sanding Sealer
- ⇒ Sandpaper
- ⇒ Club Shirts
- ⇒ Dust Jackets
- ⇒ Club Badges
- ⇒ Pen Kits
- ⇒ Pen Blanks – Acrylics
- ⇒ Lazy Susan Bearings
- ⇒ Cheese Knives
- ⇒ Salt Mills
- ⇒ Pepper Mills

**Many more items also available**

## CLUB CONVENORS

Monday	Ian Frith	Thursday	Eddie Catford
Tuesday	Bob Young	Friday	Don Nixon
Wednesday	Greg Sheath	Friday (PM)	John Kostrzewa



## Lathe Bed Servicing

If you find it difficult to move, slide the Banjo “Tool Rest” or the Tail stock along the Lathe bed then ask the convenor of the day to get the can of “Inox” from the shop, spray the bed (both rails) then slide both banjo and tail stock over the inox wet surfaces until they are free.

When you are happy at the easy movement wipe the excess Inox off with a clean soft cloth.

## Donation to Mt Druiitt Hospital Children’s Ward

Thursday 30 Jan saw John, Sandra and myself visiting the Children’s ward at Mount Druiitt Hospital to present the Airvo 3 Respiratory Support Device that was purchased with the funds raised from selling charity bowls.

This equipment delivers warm, humidified air and oxygen. Humidification is important for babies and children suffering from respiratory problems such as bronchitis, pneumonia and cystic fibrosis, helping them to breathe easier. The Hospital asked for this item, and it is an improvement on similar older devices as children using this can move around and do not need to be “unplugged” to go to other parts of the hospital for treatment.

Thanks are due to everyone for making and selling charity bowls, allowing us to make these donations. To date our club has donated in excess of \$100,000 to Mt Druiitt Hospital.





## Hot Topic From the Internet . . .

(This to encourage discussion. The comments and opinions of others are theirs alone and should not be considered instruction r advice.)

**What do you think? Drop me an email and I will publish member opinions**

## Why Heat-Treating steel Is More Than Essential

by Paul Carter | September 09, 2014

Steel is an amazing material. It comes in an array of types, from stainless to high speed. However, it is often the heat-treatment process that makes steel usable for hundreds of applications.

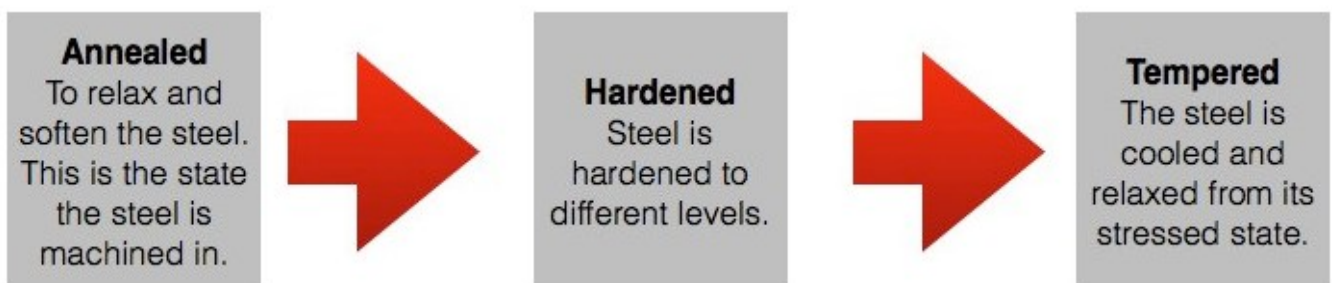
Steel is shipped from suppliers to machine shops around the world in an annealed state. Because this is the steel's softest and most relaxed state, machining the steel in this form is much easier. Heat-treatment always takes place on annealed steel. Once a steel has been heat-treated, it can be returned to it's annealed state. Steel cannot be re-heat-treated without first being annealed.

To anneal steel, heat it up about 100 degrees F above its critical temperature, soak it at that temp for 1 hour per inch of thickness, and let it cool at a maximum rate of 70 F per hour.

Once the steel has been machined, it moves onto heat-treating. The steel is hung on wires and then heated to hundreds of degrees Fahrenheit. Different types or grades of steels can be heat-treated to different harnesses. The steel used for our tools, M42 high speed steel, has a 10% cobalt content. This cobalt allows us to heat-treat our tools harder than most high speed steels, to a hardness of 68 HRC.

After the hardening process, the steel is very brittle and pressured. This is why tempering is the next step in heat-treating. Tempering reduces the internal stress of the steel and increase the steel's robustness.

Once the steel has been tempered it is ready for use in a huge warehouse, machine shop or at your lathe.



Source: Why Heat-Treating Is More Than Essential | Carter and Son Toolworks

# FINISHES (PT 2) -See December 2024 for Pt 1

## Spraying

Any spraying should always be done in a well ventilated area kept as dust-free as possible. Clear

**1** A Lazy Susan bearing screwed to the underside of a wooden disc makes an excellent turntable for placing items to be sprayed, as they can be rotated without being touched and spoiling the effect.



**2** Applying several light coats will give a better finish than one heavy coat.

## Waxing

To reduce the harshness of a highly glossed finish, it is best to apply paste waxes with oooo-grade steel wool.

**1** Take up a small amount of wax on a pad of oooo-grade steel wool, and use light pressure and a circular motion to evenly apply the wax.



**2** Once the wax has dried it can be polished off by hand or, less laboriously, on a slow running buffing wheel that is reserved for this purpose.

# Scorching

Burning the surface of a bowl that you have spent some time turning might seem a bit drastic, but it can be a very effective means of decoration. Open-grained or coarse-grained wood, like oak, ash or sweet chestnut is more suitable than fine close-grained wood, and burrs take on a crumbled appearance.

1. In scorching, the surface of the object is burned with a blowtorch to blacken it and give it an aged and weathered appearance. This type of decoration does not lend itself to thin walled bowls and the like, which would probably burst into flames.



2. When the surface is burned quite dark, the softer summer growth, burning away quicker than the winter growth, leave a layer of soot that is removed with a fine wire brush to reveal the true surface.



3. Sometimes you can cut a series of grooves to define certain features—in this piece the band below the rim.



4. You can leave parts of the object natural. Here, the chuck recess was left because the accuracy could be affected by the scorching, and it provides a nice contrast and leaves you somewhere to sign, date and identify the wood.

*Source: Two books in One: Woodturning by Phil Irons*

# SANDING

I normally power sand all the way thru 320. But I do not turn the lathe on.

My normal grits are 120, 220, 320, then power buff with a cotton buffing wheel and white diamond compound (which doesn't contain diamond!).

Think about it.....when you are sanding with the lathe on, you are sanding 100% of the circumference of the bowl, when mostly you really only need to sand the end grain. If you leave the lathe off, you only sand each area as much as it needs to be sanded, then move on to the next area. If one area is a little rough, sand it more. But you don't have to sand the whole thing just to smooth one little spot.

The vast majority of power sanding discs are much too firm. If you wind up with sanding swirls, you need to make some new discs. A disc of 1/2" plywood with a tee nut and a 1/4" bolt with the head cut off, forms the base. For 4-5" discs, a piece of foam 1" thick glued to the face of the plywood makes the cushion.

Cut this foam out of 4 lb. ester foam, which you get at a foam supplier.. Glue with contact cement.

After attaching the foam, chuck up the device and sand the edge of the foam to a 45 degree angle by sticking down a coarse piece of sand paper and using it to round and form the foam. It will make huge clouds of rubber dust, so wear a mask.

Lastly, cut a piece of leather 3/4" larger in diameter than the largest diameter of the foam. Contact cement this disc in place with the flesh side to the foam. You can use hook & loop tape to hold commercially available sanding discs, or you can attach the sandpaper with double-sided carpet tape stuck to the leather. Just whack it off and fold the excess back over itself until none of the tape sticks out past the leather, then plop it down on a sheet of sandpaper and trim to the leather with a utility knife.

The purpose of having the leather stick out past the foam is to keep from pressing the edge of the sandpaper (which is where the swirls comes from) against the wood. Rather, it just 'floats' over the wood. Also, the soft foam prevents sanding gouges and burns, plus it is flexible enough to sand pretty concave contours, such as the inside of a bowl.

Do not substitute canvas or other materials for the leather, as they will not work as well. 2-3oz tooling leather is just right and you can get it at any leather supply store.

A sanding pad constructed as above and using 320 grit paper will produce a surface that is comparable to 600 grit hand sanding. Then power buffing with a cotton buffing wheel/white diamond will make the wood gleam!!!

Incidentally, the wax bonding agent in the buffing compound will not affect any finish I have ever used. You apply so little compound that the wax cannot be more than a few molecules thick, and if you are concerned, just buff it again with a clean buffing wheel

Source: [Woodturning Articles - Sydney Woodturners Guild](#)

# My Favourite Finish

Keith Jeeves

I like my timber finish to have a 'shine' but not a gloss. I find when selling pieces, that the buyer often enjoys wax polishing fine decorative woodwork and, I suspect, is a selling point in many cases. The problem is how to get a high sheen onto the timber with a wax finish.

Just applying wax will not do the job, especially on open grained timbers although Canauba wax applied to a small box made from a dense timber such as gidgee can give a beautiful finish and I tend to use Shellawax for this sort of thing. Large Camphor Laurel bowls, however, are a different thing altogether so how do I approach these things?

The first point I want to make is that I never finish large pieces on the lathe. Once the piece is sanded, sealed and the bottom turned, all subsequent work is done off the lathe.

Once the piece is sanded and all blemishes are gone, I will seal the wood with a sanding sealer. I have tried cellulose sealers but prefer Feast Watson Sanding Sealer which I thin down a little with turps. With the lathe stopped, apply the sealer with a rag, rubbing it well into the surface ensuring that the entire surface has even coating. Leave it for a few minutes and then wipe off the excess with paper towel or rag getting as much off as possible. Spin the lathe and remove more of the sealer, only applying light pressure and turning the cloth frequently. When you feel that the grabbing has finished, use a clean rag and friction polish the surface by applying a little more pressure to the rag. When it is done correctly, the surface will have a reasonable polish, there will be no streaking and the surface will be touch dry. I will reverse the bowl at this stage, usually on a vacuum plate, and turn, sand and seal the bottom. The bowl is taken off the lathe and set aside for a few hours. The piece will not be put on the lathe again.

The next step is to spray the piece with lacquer, Mirotone 886 full gloss by choice although other nitro-cellulose lacquers will be fine. The idea here is not to get a gloss lacquer finish but to provide a good surface for the subsequent waxing so a few very light coats are all that is needed. (I use a CIG Easyspray but it is only just adequate, a decent compressed air spray system would be better). After spraying, the piece is left for a few hours to cure.

Now for the fun bit.

The surface needs to be lightly cut back with 0000 steel wool to remove any dust which has been picked up and then cut back further with an abrasive wax such as U-Beaut EEE after which the surface is buffed up with a soft cloth. As this is pretty tedious stuff, I find it is best done in front of the TV with a good woodturning movie showing.

The final stage is the waxing which is pretty routine stuff. My wax of choice is U-Beaut Traditional Wax but pretty well any good paste wax will be fine. I will usually give two applications at this stage with further waxing done at a later stage. The later stage is more often than not immediately before a showing or during a craft show when a bit of activity will draw spectators.

The result is a piece with an attractive and durable finish which is easily maintained and will improve with age. I read once that when a piece is freshly lacquered, that is the best it will ever look in it's life whereas a regularly waxed finish will get better and better.

Source: Sydney Woodturners Guild [Oil Finishing](#)



Member #	Title	First Name	Surname	Month
1126	Mr.	Allan	Kirkland	January
2446	Mr.	Mark	Dunn	January
2544	Mr.	Raymond	Saich	January
2573	Mr.	Fred	de Jonge	January
2630	Mr.	Russell	Werner	January
2822	Mr.	John	Connaughton	January
2857	Mrs.	Branka	Hedges	January
2858	Mr.	Lloyd	Ives	January
3872	Miss	Joyleen	Clapham	January
3902	Mr.	Naveen	Sharma	January
4030	Mr	Sanjay	Singhai	January
4038	Ms.	Helen	Hunter	January
4075	Mr.	Vinay	Kumar Kanda	January
4054	Mr.	Stephen	Holmes	January

Member #	Title	First Name	Surname	Month
557	Mr.	Graham	Dawes	February
2254	Mr.	Emanuel	Farrugia	February
2761	Mr.	Tony	Simiana	February
2860	Ms.	Fiona	Deane	February
3639	Mr	Mehmet	Colpan	February
4009	Mr.	Maurie	Knight	February
4047	Mr.	Michael	Grima	February
4055	Mr.	Lachlan	Holmes	February
4069	Ms.	Yin Yee	Ho	February
4061	Mrs	Michelle	Liew	February

# Inspiration for 2025



## SAFETY HINT AND TIP.

Your body is precious. It needs you to look after it.



As members are starting to use and explore different machines there comes an added responsibility in their use and one of those is the use of “PUSH STICKS.”

Again, as we always say if you are not conversant with the operation of any of the machines ASK as there are important accessories that come with their use.

All machines that have exposed blades such as the Band saw, table saw, drum sander, thicknessor and router etc. come with “PUSH STICKS.”

It is important that you use these as any accident on these machines are generally catastrophic. Eddie C.



# Upcoming Events

## Craft Alive 2025

Hawkesbury Wed 28th May—Sat 31st May

Canberra Wed 18th June—22 June.

## Training Days

May 24th

May 31st

June 7th

## Trend Timbers Open Weekend Demonstrations

Saturday 5th April

Sunday 6th April

## Bunnings BBQ

Saturday 1st March

Saturday 5th April

Saturday 7th June

Saturday 4th October



# TREND TIMBERS

**SPECIALIST IN FINE WOODS**  
Established 1969 A third generation timber family

## YOUR 1 STOP WOODWORKING SHOP IN NSW

<p><b>Over 100 species</b> Select timbers for Cabinetmaking Furniture Joinery Woodturning Carving</p>	<p><b>TREND TIMBERS</b> 15 Railway Road North, Mulgrave NSW 2756 <b>TELEPHONE: 02 4577 5277</b> <b>FAX: 02 4577 6846</b> Email: <a href="mailto:sales@trendtimbers.com.au">sales@trendtimbers.com.au</a> <a href="http://www.trendtimbers.com.au">www.trendtimbers.com.au</a></p>	<p><b>Opening Hours</b> <b>ALL WELCOME!!</b> Mon– Fri 8am-4pm Sat 8am-11.30am Closed Public Holidays &amp; Long Weekends</p>
---	---	--



## Members Welfare Report

The welfare of members and their families is important to our club. Please let me know if you or someone you know is unwell, or worse still, no longer with us.

Get Well Cards have been sent to the following Members and/Or Partners

**Denis Keane**

We wish everyone a Speedy Recovery.

There were no Sympathy cards sent this month.

Viv Tabone is taking over as the Welfare Officer from this month. If you become aware of the need for get well and sympathy cards, please let her know at her email address:

**[mrsparky1@bigpond.com](mailto:mrsparky1@bigpond.com)**

or



**The 2025 Lunar New Year ushers in the Year of the Wood Snake**, a time filled with deep cultural meaning and

significance. In the Chinese zodiac, each year is associated with one of the 12 animals, and 2025 is dedicated to the Snake. Known for its intelligence, mystery, and ability to transform, the Snake's qualities are enhanced by the Wood element. This year symbolizes growth, renewal, and

adaptability, encouraging people to reflect on their paths, embrace change, and seek personal growth.

### **What does the Wood Snake represent?**

The Wood Snake blends the qualities of the Snake with the influence of the Wood element. Snakes are traditionally seen as wise, strategic, and mysterious. They are known for their sharp minds, problem-solving skills, and an ability to navigate complex situations. The Wood element adds a layer of growth, creativity, and flexibility, making the Snake more adaptable and open to change. Just as the Snake sheds its skin, this year represents the opportunity to renew oneself, embrace new possibilities, and leave behind outdated ways.

Hare and Forbes Marketing for this month is not yet available, the on-line copy of this newsletter will be updated as soon as the marketing material becomes available.

## THE BACK PAGE

Item 59

Mounting methods

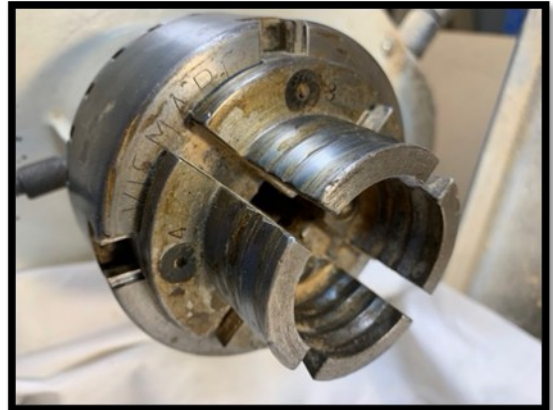
February 2025

### Chuck Jaws 2

The first picture is generally referred to as “pen Jaws” These jaws are so designed to clamp long pieces of wood generally square but not limited to that only as they are also suitable for round or rectangle shapes, mainly for drilling center holes over a long distance



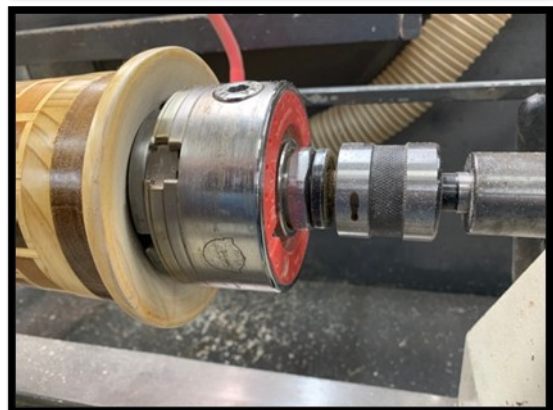
The next set of jaws are generally referred to as “Shark Jaws” and suitable for holding work pieces that are long and not supported by a live center with both internal and external grip. These jaws are very safe to use but like everything, stretch the limits and suffer the consequences. It is important when using these jaws that they go the full depth, so the face of the workpiece is up tight against the face of the jaws. This prevents flexing when turning.



The next set are like the Shark jaws used in the same way only on a smaller scale but used with the same precautions.



The next picture is not of a jaw type but a very useful accessory when it is necessary to have a robust work piece support on the tail stock end of the machine. In this case it allows a chuck to be mounted on the adaptor and become a live center with full support. It is not uncommon to see face plates used in similar applications.



**Note.** As in all professions there are many and varied opinions and ways of doing things. This is true of wood turning. These articles are the results of my reading article publications Eddie C