

WesTurn News

The official organ of Western Sydney

Issue: 284



March 2025

Western Sydney Woodturners Inc

Twin Gums Retreat, Corner Northcott Road and Diane Drive

PO Box 4008, Lalor Park NSW 2147

Web Site: www.westernsydneywoodturners.com.au

We've started our fundraising activities for 2025 with success. The Craft Alive show at Rosehill raised over \$300 for our charity and helped raise the profile of our Club. Thanks to everyone who participated by prepping bowl blanks, turning charity bowls, attending the show and particularly those who helped set up and and pack up. We had a Bunnings BBQ on the 1st March which raised over \$1000 for our Club – again thanks to those of you who helped make this BBQ happen. For those who have asked why we don't sell charity bowls at these BBQs - Bunnings has been asked and has confirmed that we can't do this.

At the moment our Club is open every weekday, but the Friday daytime workshop is perilously close to being shut down. Don can only continue opening if members attend, so if anyone is looking for a quieter (less busy) day, join in on a Friday.

The new router table which Maurie has been working on diligently is now finished – thanks Maurie.

Matthew Keen has agreed to take over as webmaster. Thanks to Les for all his work on this over the last few years. The last newsletter didn't go online as usual because Les is having a well earned relax while cruising the oceans! My website management skills are sadly lacking, so I couldn't step in. Matthew should be up and running very soon and all will be back to normal. We've also had some lengthy technical issues with the email distribution service we use, hence I've been unable to send out emails to all members. Unfortunately we recently had a couple of Club workshop closures for which advice couldn't be sent out by email. Many members were contacted directly by the Convenors, but unfortunately some members didn't get the message. With Matthew's help, the email system should be back on track this month.

Larger size Polo shirts with the Club logo are back in stock in the shop, as are the green turning jackets. If you ever want one but your size is out of stock, please let me know. Similarly, if you want to purchase something in particular from Timberbits, let me know and I can include it in our next order.

Cindy

SAFETY MATTERS

A REMINDER ABOUT WORKSHOP SAFETY

We must all keep in mind the importance of WORKSHOP SAFETY. Please THINK and ACT responsibly at all times. It is up to all of us to fulfill our commitment by wearing at all times;

- ◇ Dust masks
- ◇ Protective glasses
- ◇ Suitable clothing
- ◇ Footwear
- ◇ Ear protection

It does not hurt to discuss safety with other members if they are not doing the right thing.

ARTICLES FOR NEWSLETTER

Could I please ask those members who attend our demonstrations, maxi-days etc.; if you could take some photographs and a brief description of the event so these can be published in the newsletter I am sure all members would be interested in reading about the events of the day. Thank you.....Editor.



CUT OFF DATE FOR ARTICLES

Please note the cut off date for articles to be included in the Newsletter is the last day of the month.

All members are welcome to submit articles for inclusion.

Please send them to the editor;

Email address: augoodtime@hotmail.com

Club Committee

President: Cindy Kersaitis
(0408760131)

Vice Presidents: John Kostrzewa and

Robyn Mahoney

Secretary: Mike Grima

Treasurer: Andrea McFarlane

Public Officer: Sandra Ongley
sandraongley21@gmail.com

Librarian: Rod Brown

Editor: Robert Ryan
augoodtime@hotmail.com

Webmaster: Matt Keen
mkeen21@gmail.com

Training Co-Ordinator: Greg Sheath

Trainers: Graham Dawes (JP), Rod Brown, Ron Devine, Greg Sheath, Rob Stewart, George Manou, Don Nixon,, Bob Young, Cindy Kersaitis & Robyn Mahoney

Shop Manager:

Cindy Kersaitis

Equipment Maintenance:

Eddie Catford (Coordinator), Cindy Kersaitis, Manny Farrugia, Dave Matthews, Graham Dawes (JP), Bob Young, Ron Devine, Glenn Freeman and George Manou.

Welfare Officer: Viv Tabone
0414557776

mrspaarky1@bigpond.com

Membership Secretary: Viv Tabone

Catering Officer—team effort

Maxi Days—Don Nixon & others

Club Hours

Mon-Fri: 8:30am – 3pm....\$5

Friday Nights: 5pm – 9pm....\$5

Please note: these hours are approximate and the Club will not remain open when fewer than three members are present

Saturday Turning

Ladies Day: 2nd Saturday...\$5

Contact: Robyn Mahoney

0411 845 776

robymahoney@hotmail.com



A very big thank you to Michelle Rowland MP, the Member for Greenway, for her continued support which includes the printing of this newsletter.

If you have any suggestions or information concerning the club please contact any of the above committee members.

Club Meetings

7pm second Tuesday of each month except December.

All members welcome

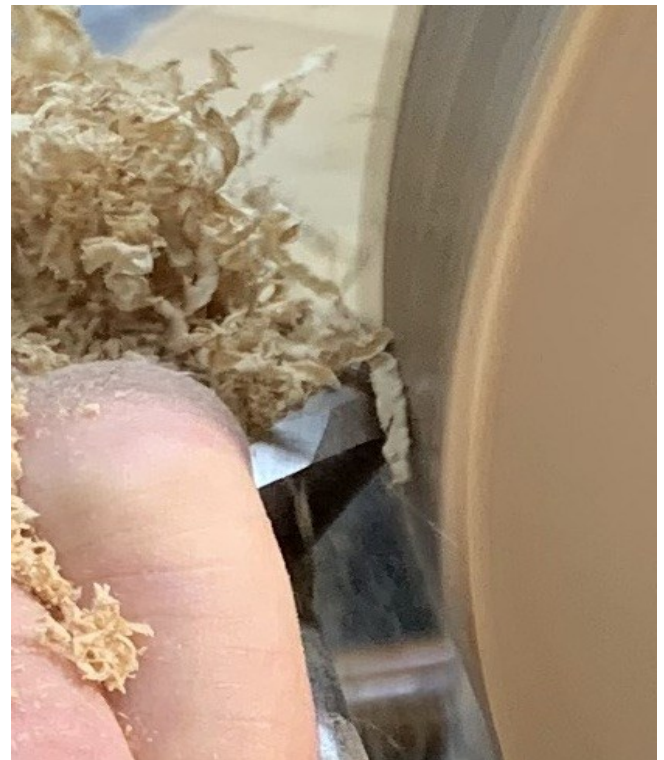
Shop items

- ⇒ Ozzie Grit
- ⇒ Friction Polish
- ⇒ Sanding Sealer
- ⇒ Sandpaper
- ⇒ Club Shirts
- ⇒ Dust Jackets
- ⇒ Club Badges
- ⇒ Pen Kits
- ⇒ Pen Blanks – Acrylics
- ⇒ Lazy Susan Bearings
- ⇒ Cheese Knives
- ⇒ Salt Mills
- ⇒ Pepper Mills

Many more items also available

CLUB CONVENORS

Monday	Ian Frith	Thursday	Eddie Catford
Tuesday	Bob Young	Friday	Don Nixon
Wednesday	Greg Sheath	Friday (PM)	John Kostrzewa



IF YOU ARE NOT RUBBING THE BEVEL,
YOU ARE NOT USING THE TOOL CORRECTLY

Consequently. You lose the cutting edge quickly. Blunt the tool. Lot of tool sharpening. Tearing and not cutting just to mention a few.

Remember. A. Anchor. B. Bevel. C. Cut.

Maintaining contact with the bevel as cutting.

Eddie C.



Hot Topic From the Internet . . .

(This to encourage discussion. The comments and opinions of others are theirs alone and should not be considered instruction r advice.)

What do you think? Drop me an email and I will publish member opinions

Wood Drill Bits and their Uses



Brad Point Drill Bits

Best for: Boring precise, clean holes in wood.

[Brad-point drill bits](#) are designed to provide precision and clean cuts in wood. This bit has a sharp point at the tip with spurs on the cutting edges. The central brad helps position and stabilize the bit accurately, while the extra-wide flutes efficiently remove wood chips and dust. These bits are ideal for tasks such as drilling cabinet doors for hardware installation. Some models include rubber stoppers to preset the



Twist Drill Bits

Best for: General-purpose drilling in wood, plastic, and light metal.

[Twist drill bits](#), also known as fluted bits, are the most common and versatile in many toolboxes due to their versatility. They feature spiralled grooves, or flutes, that direct waste material out of the hole as the bit penetrates the workpiece. This design allows for general-purpose drilling in wood, plastic, and light metal. Twist bits are typically used for holes up to one inch in diameter; for larger holes, spade bits or hole saws are preferred.



Spade Drill Bits

Best for: Drilling large, flat-bottom holes quickly in wood.

[Spade drill bits](#), sometimes called paddle or flat bits, are essential for drilling large holes (up to 1-1/2 inches) in wood, commonly used by electricians to run cables. These bits feature a flat, paddle-shaped blade with a sharp centre point that helps position the bit accurately and score the perimeter of the hole, minimizing tear-out. They are a go-to choice for experienced woodworkers needing to create large-diameter holes.



Auger Bits

Best for: Drilling clean, deep, and precise holes in wood with smooth edges in wood, ideal for thick timber.

[Auger drill bits](#) are designed for deep wood boring and efficient chip removal, featuring a protruding tapered screw that helps start the hole and pull the bit through the wood with one or two cutting edges. This type of drill bit can be as long as 18 inches and has large flutes along the shaft to quickly remove wood chips and sawdust, making it easier to drill deep, clean, and straight holes up to 18 inches long without applying excessive pressure.



Countersink Bits

Best for: Drilling pilot, countersink, and counterbore holes for screws, bolts, or other fasteners to fit into, allowing screws to sit flush or below the material surface.

[Countersink drill bits](#) prepare wood for screw installation by cutting an area that matches the countersunk shape of the screw head, allowing it to sit flush with the wood surface. This creates a strong, neat joint between the screw and the wood, enhancing both the appearance and integrity of the connection.

Best for: Drilling holes of multiple hole sizes in thin materials, including sheet metal, wood, and plastic.

[Step drill bits](#) have a cone-shaped tip with a stepped or staggered profile that widens towards the flute, allowing for drilling holes of different diameters. Primarily used for sheet metal, these bits can also work with soft woods. Each step corresponds to a different drill size, allowing the users to drill multiple hole sizes with a single bit.



Step Drill Bits

Best for: Cutting large, round holes while leaving the core intact.

[Hole saw drill bits](#) can cut large holes in various materials, including wood, metal, tile, plastic, and masonry. They feature a circular cutting blade with a central pilot tip for steadying and centering the bit. These bits are ideal for applications such as installing door hardware, metal, tiles, plumbing fixtures, electrical boxes, and more.



TCT Hole Saws

Best for: Drilling clean and flat-bottomed holes for hinge installation in woodwork, specially designed for carpenters.

[Hinge boring bits](#) are designed to create precise, clean holes for installing hinges. They feature a flat-bottomed design with a central spur and cutting edges, ensuring a professional finish in woodworking projects involving hinges.



Hinge Boring Bits



Dowel Drill Bits

Best for: Creating square holes, often used for making mortise and tenon joints.

[Square hole drill bits](#), or mortising bits, are used with a mortising machine to create precise square holes necessary for strong mortise and tenon joints. They are essential for advanced woodworking projects requiring accurate and durable joints.



Square Hole Drill Bits

Choosing the Right Drill Bit

When selecting the appropriate drill bit for your woodworking project, take into account the material you're working with, the size and depth of the holes you need to create, the type of screw you need to remove or fasten, and the desired level of precision and finish. Having a variety of specialized drill bits in your toolkit will allow you to tackle a wide range of drilling tasks efficiently and with high-quality results.

Source: [A Comprehensive Guide to Different Types of Drill Bits and Their Uses – FindBuyTool](#)

And now for what is probably the most commonly used drill bit used at this club: the Forstner bit. While most of us know that they are designed to cut large flat bottom holes in wood. But did you know that there are different types of Forstner bits. The major difference is in the cutting edge of the guide rim. Look at the graphic and you will see the 3 major types:

- Saw Tooth Rim which cuts cooler and faster but is less accurate;
- Continuous (or knife edge) Rim for cleaner cuts; and
- Wavy Rim which is a variation of the other two.



SAFETY HINT AND TIP



REMEMBER THESE



REMEMBER THESE

REMEMBER TO USE THEM

REMEMBER

YOUR BODY IS PRECIOUS IT NEEDS YOU TO LOOK AFTER IT

THINK AND ACT SAFETY

EDDIE C

Joke of the Month

A police officer pulls over a semi truck. He gets the usual license and registration, but hears strange noises coming from the trailer, so he decides to investigate. Inside, he finds 50 penguins.

“Sir, why do you have 50 penguins in your truck?”
The officer asks the driver

“Well, they’re my friends, and we like to go on journeys together in my truck” the man replies

“I’m sorry sir, but you can’t just own 50 penguins. I’m afraid you’re going to have to take them to the zoo”

The man agrees and drives off. The next day the same cop pulls the truck over again, and once again hears strange noises in the trailer. He goes to check and finds the same 50 penguins.

“I thought I told you to take these penguins to the zoo yesterday!” The cop angrily tells the driver

“I did take them to the zoo! They loved it! Today we’re going to the beach”



Members Welfare Report

The welfare of members and their families is important to our club. Please let me know if you or someone you know is unwell, or worse still, no longer with us.

Get Well Cards have been sent to the following Members and/Or Partners

Maria Kovac, Paul Collins, Ian Frith, Denis Keane and Joyleen Clapham

We wish everyone a Speedy Recovery.

A Sympathy card was sent this month to Jennifer Rogers, daughter of our member Les Pritchard.

Viv Tabone is the Welfare Officer. If you become aware of the need for get well and sympathy cards, please let her know at her email address:

mrsparky1@bigpond.com



Member #	Title	First Name	Surname
3599A	Mrs.	Jill	Catford
3662	Mr.	Benjamin	Reardon
3828	Miss	Chantelle	Hazell
3909	Mr.	Phillip	Grebert
3911	Mr.	Justin	Kahane
4031	Mr.	Maurice	Petrin
4036	Mr.	Allan	Condon
4064	Mr.	Blake	Suggett
3865	Ms.	Yo	Whybrow

Upcoming Events

Craft Alive 2025

Hawkesbury Wed 28th May—Sat 31st May

Canberra Wed 18th June—22 June.

Training Days

May 24th

May 31st

June 7th

Trend Timbers Open Weekend Demonstrations

Saturday 5th April

Sunday 6th April

Bunnings BBQ

Saturday 5th April

Saturday 7th June

Saturday 4th October

Dear WSWT

Letter of Thanks

On behalf of the Department of Paediatrics at Mount Druitt Hospital, I would like to personally thank you for your generous donation of Airvo3 that you had generously donated to our ward.

This versatile piece of equipment provides non-invasive respiratory support which is effective for delivering oxygen and humidified air pressure for children with increase work of breathing due to respiratory illnesses.

Once again, the staff and patients of the Department of Paediatrics at Mount Druitt hospital extend a warm thanks for your support.

Kind regards,



Jessica Rainert
Head of Department Paediatrics



Western Sydney Local Health District
ABN 48 702 394 764

Mount Druitt Hospital
Railway Street, MOUNT DRUITT NSW 2770
Tel. (02) 9881 1555
www.wslhd.health.nsw.gov.au



– or - how Manny spent his 85th birthday



The first Craft Alive show on the WSWT calendar for 2025 took place at Rosehill Racecourse on 13 – 15 February.

We had a great position and were able to showcase our Club and what we do. A lathe was set up and Don and Manny gave demonstrations. There was a lot of interest and sales were made, including charity bowls.

A highlight came near the end of the first day when it was announced over the PA system that Manny from Western Sydney Woodturners was celebrating his 85th birthday. Everyone around clapped and a slightly embarrassed Manny took a bowHappy birthday Manny!

Thank you to all the Catfords, the Stewarts, the Nixons, Fiona, Cindy and everyone else in the wings that helped to make this a success.

Andrea



TREND TIMBERS



SPECIALIST IN FINE WOODS
Established 1969 A third generation timber family

YOUR 1 STOP WOODWORKING SHOP IN NSW

Over 100 species
Select timbers for
Cabinetmaking
Furniture
Joinery
Woodturning
Carving

TREND TIMBERS
15 Railway Road North,
Mulgrave NSW 2756
TELEPHONE: 02 4577 5277
FAX: 02 4577 6846
Email: sales@trendtimbers.com.au
www.trendtimbers.com.au

Opening Hours
ALL WELCOME!!
Mon– Fri 8am-4pm
Sat 8am-11.30am
Closed
Public Holidays &
Long Weekends



Open Weekend

Trend Timbers

5th & 6th April

WSWT members will be demonstrating our craft in support of this event, so come along and give a hand or just show what you can do. Don't underestimate your skills and knowledge.



You may even learn a new skill or pick up some extra knowledge about the machinery on display, tools and knick-knacks available as well as sharing information (like "how did you make that box", "are Japanese saws as good as they claim to be") with like minded artisans. You might even see that new lathe, saw or chisel that you dream about at night. So get out there and have some fun!



10 mistakes woodturners make:

1. Not sanding with the grain. We've all had those unsightly sanding grooves on 'finished' works.
2. Practicing turning on soft wood like pine. Unless your chisels are razor sharp, you will get a lot of tear out
3. When buying a lathe, focus on bed length rather than the swing over the bed.
4. Turning at the wrong speed, especially turning too fast when the wood is unbalanced.
5. Working with dull tools—go sharpen your chisels or if using carbide, replace the cutter.
6. Not re-tightening the chuck. Mount the blank, tighten the chuck, give it a spin to ensure that it is aligned properly and then tighten again.
7. Not weighing down the lathe. This can translate to vibration at the cutting edge.
8. Not wearing Personal Protective Equipment (PPE). Safety glasses, dust masks and ear protection are a minimum. Also remember to not wear loose clothing, jewellery and necklaces.
9. Not repositioning the tool rest when required.
10. Not spending money or acquiring the other items you'll need to successfully turn. Some examples include a slow speed grinder, sharpening jig, Good quality tools, spur drive, live centre, 4 jaw chuck and drill bits.



Now that is a challenge!

MINI WOOD LATHE - WL-14V

- Ø356 x 470mm turning capacity
- Electronic variable speed (450-3850rpm)
- Digital readout speed display
- 12 position spindle indexing
- 0.75hp, 240V motor



\$599 (W385)
SAVE \$50

DUST COLLECTOR & CYCLONE SEPARATOR DCC-310

- 1 x DC-3 Dust Collector 240V (W394)
- 1 x CDS-2/3 Cyclone Separator (W316)
- 1 x FC-10 Filter Cartridge (W328)
- 1 x DCK-2 Dust Accessory Kit (W344)



PACKAGE DEAL

\$1,265 (K047)
SAVE \$176 OFF RRP

Universal Tool Stand UTS-1

- 100kg load capacity
- 335 x 590 top
- 770mm height



\$55 (W810)
SAVE \$11

DUST COLLECTOR HD12

- 680cfm LPHV system
- Large collection area
- 3/4hp, 240V motor



\$297 (W886)
SAVE \$33

WOOD BAND SAW & CIRCLE CUTTING ATTACHMENT BP-255

- 245 x 152mm capacity
- Cast iron table tilts 45°
- 2 x blade speeds
- LED lighting
- 0.375kW / 0.5hp 240V
- PACKAGE DEAL includes BP-255 Wood Band Saw & CCA-255 - Circle Cutting Attachment

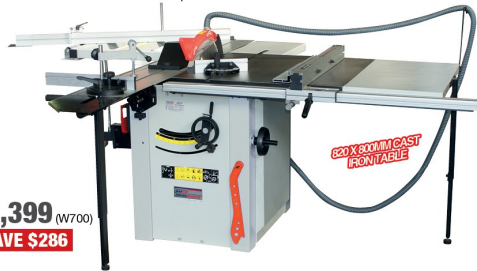


PACKAGE DEAL

\$549 (W9501)
SAVE \$89 OFF RRP

PANEL SAW - PS-1810

- Ø315mm TCT blade
- 1240mm rip capacity
- Ø90mm scribe blade
- Tilt arbor to 45°
- 1900mm table travel
- 4hp 240V 15A motor



\$3,399 (W700)
SAVE \$286

Bench Mount Thicknesser - HSS Blades T-13B

- 330 x 152mm capacity
- 2 x HSS blades
- Anti-kick back fingers
- 2hp, 240V motor



\$449 (W812)
SAVE \$46

HSS Wood Turning Tools - 8 Piece Set - WT-8

- High speed steel
- 15mm & 26mm skewes
- 7mm & 14mm spindle gouges
- 14mm & 16mm parting & beading
- 24mm roughing gouge
- 15mm domed scraper



\$109 (W301)
SAVE \$23

Vertical Oscillating Bench Bobbin Sander - OS-58

- 1/2", 3/4", 1", 1-1/2", 2" & 3"
- 370 x 290mm cast iron table
- Rotating & oscillating
- 450W / 240V motor



\$299 (W843)
SAVE \$53

Tilting Scroll Saw - SC-450T

- 457mm throat capacity
- Tilting table 0-45°
- 240V motor



\$399 (W353)
SAVE \$19

Vertical Oscillating Bobbin Sander with Cabinet Stand OVS-JM

- 1/4 - 4" sanding sleeves
- 1725rpm spindle speed
- Oscillates 75/min.
- 0.75kW / 1hp, 240V motor



\$2,860 (W795)
SAVE \$275

View and purchase these items online: www.machineryhouse.com.au



MEGA DEMO DAY! Get in-store to see some of Australia's best metal shapers, ask questions and learn a lot! Saturday 22ND only!
AND FREE SAUSAGE SIZZLE

Specifications & Prices are subject to change without notification. All prices include GST and valid until 31-03-25

SYDNEY
(02) 9890 9111

BRISBANE
(07) 3715 2200

ADELAIDE
(08) 9373 9969

MELBOURNE
(03) 9212 4422

PERTH
(08) 9373 9999

THE BACK PAGE

Item 60

Mounting using support Jig

March 2025



This is one method of using a support Jig but not limited to or restricted to large bulky heavy objects.

The jig itself is generally constructed of solid timber or professionally made from steel.

It is so designed so that the three legs are adjustable over a large distance so that it can be used on thinner, longer and not so heavy work pieces but is necessary for support when turning over long distances.

Mainly not to allow the work piece to whip or get out of balance which could cause a catastrophe.

There are many different designs and ideas used, as wood turners are very inventive in times of need.

Eddie C

Note. As in all professions there are many and varied opinions and ways of doing things. This is true of wood turning. These articles are the results of my reading article publications.