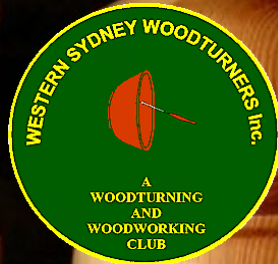


# WesTurn News

The official organ of Western Sydney

Issue: 290



September 2025

**Western Sydney Woodturners Inc**

**Twin Gums Retreat, Corner Northcott Road and Diane Drive**

**PO Box 4008, Lalor Park NSW 2147**

**Web Site: [www.westernsydneywoodturners.com.au](http://www.westernsydneywoodturners.com.au)**

The most obvious thing to notice this month is the large new cabinet that is slowly and laboriously being put together by Eddie, John K, Manny, Ray S, Les and Don (thanks guys). This is a project that was in the planning well before my time as President, but has at last come to fruition! The white “cage door” cupboard that currently houses all the chucks etc. will be demolished (together with the cupboards underneath them) and the new cabinet installed there. All the chucks from the white cage and the majority of chucks etc from the tool room will go into the new cabinet. A secondary benefit from the relocation of tools from the tool room is that it provides me with the perfect opportunity to review the use of space in the tool room.

For those that thought the duck boards had gone missing – I have returned them to their usual location in the tool room (I found them in the corner near the library).

The shadow board arrangements that will replace the current toolboxes at each lathe is still being planned but will take time, so please just bear with me on that.

We now have a spare pleated dust extractor filter (on the loft in the tool room). This is only to be used when the ones currently in use are being cleaned (not to be thrown out). Please remember to give these filters a good swipe with the rotary handle (it vibrates the pleating to release the dust) any time you use the extractors.

The vacuum cleaner that was giving us grief has been replaced with a new one. Please remember that you need to sweep the floors well first - the vacuum is only to clean up any remaining small bits – they aren’t for sucking up all the wood shavings, unless you want to empty the vacuum cleaner every time you use it.

Several new chucks and face plates have been purchased to replace some of our worn out ones that don’t work anymore – these were well past their use by date and had become unsafe with bowls flying off! The new chucks have Vicmarc inserts so that they will work well on both the Cougars and the Vicmarcs.

Reminder that the next Bunnings BBQ is Saturday 4th October – please put your name down on the sign up sheet if you can help out!! There are no names on the sheet at the time I write this.

Cindy

# SAFETY MATTERS

## A REMINDER ABOUT WORKSHOP SAFETY

We must all keep in mind the importance of WORKSHOP SAFETY. Please THINK and ACT responsibly at all times. It is up to all of us to fulfill our commitment by wearing at all times;

- ◇ Dust masks
- ◇ Protective glasses
- ◇ Suitable clothing
- ◇ Footwear
- ◇ Ear protection

It does not hurt to discuss safety with other members if they are not doing the right thing.

## ARTICLES FOR NEWSLETTER

Could I please ask those members who attend our demonstrations, maxi-days etc.; if you could take some photographs and a brief description of the event so these can be published in the newsletter I am sure all members would be interested in reading about the events of the day. Thank you.....Editor.



## CUT OFF DATE FOR ARTICLES

Please note the cut off date for articles to be included in the Newsletter is the last day of the month. All members are welcome to submit articles for inclusion.

Please send them to the editor;

Email address: [augoodtime@hotmail.com](mailto:augoodtime@hotmail.com)

## Club Committee

**President:** Cindy Kersaitis  
(0408760131)

**Vice Presidents:** John  
Kostrzewa and George Manou

**Secretary:** Andrea McFarland

**Treasurer:** Andrea McFarland

## Club Meetings

7pm second Tuesday of  
each month except  
January.

All members  
welcome

## Shop items

- ⇒ Ozzie Grit
- ⇒ Friction Polish
- ⇒ Sanding Sealer
- ⇒ Sandpaper
- ⇒ Club Shirts
- ⇒ Dust Jackets
- ⇒ Club Badges
- ⇒ Pen Kits
- ⇒ Pen Blanks – Acrylics
- ⇒ Lazy Susan Bearings
- ⇒ Cheese Knives
- ⇒ Salt Mills
- ⇒ Pepper Mills

**Many more items also  
available**

## Club Hours

**Mon-Fri:** 8:30am – 3pm....\$5

**Friday Nights:** 5pm – 9pm....\$5

Please note: these hours are  
approximate and the Club will not  
remain open when fewer than  
three members are present

### Saturday Turning

**Ladies Day:** 2<sup>nd</sup> Saturday...\$5

**Contact:** Robyn Mahoney

0411 845 776

robynmahoney@hotmail.com



**A very big thank you**

**to Michelle Rowland MP, the Member for Greenway, for her  
continued support which includes the printing of this**



## CLUB CONVENORS

Monday	Ian Frith	Thursday	Eddie Catford
Tuesday	Ian Frith	Friday	Don Nixon
Wednesday	Greg Sheath	Friday (PM)	John Kostrzewa

## OTHER CONTACTS

**Public Officer:**

Sandra Ongley  
sandraongley21@gmail.com

**Grants Officer:**

Sandra Ongley

**Librarian:**

Rod Brown

**Editor:**

Bob Ryan  
augoodtime@hotmail.com

**Webmaster:**

Matthew Keen  
mkeen21@gmail.com

**Training Co-Ordinator:**

Greg Sheath

**Trainers:** Graham Dawes (JP), Rod Brown, Ron Devine, Cindy Kersaitis, Robyn Mahoney, George Manou, Don Nixon, Greg Sheath, Rob Stewart, & Bob Young.

**Liaison and Contact Officers**

**Security**— Eddie Catford

**Insurance**—David Searle

**Craft Alive**—Andrea McFarland

**Linnwood House**—Dave Matthews

**Koi Society**—David Searle

**Bunnings BBQ**—Andrea McFarland

**Shop Manager:**

Cindy Kersaitis

**Equipment Maintenance Coordinator**

Bob Young

**Maintenance Officers:** Rod Brown, Eddie Catford, Graham Dawes, Ron Devine, Manny Farrugia, Cindy Kersaitis, George Manou & Bob Young.

**Welfare Officer:**

Viv Tabone  
0414557776  
mrsparky1@bigpond.com

**Membership Secretary:**

Viv Tabone

**Catering Coordinator**

Vacant

**Maxi Days**

Vacant

**Kitchen & Cleaning Supplies**

Ian Frith

**Ladies Day Coordinator**

Robyn Mahoney

**First Aid Supplies**

Robyn Mahoney

# Demonstration Turned Boxes

Before the recent AGM the training team demonstrated the making of a turned box.

Those who attended were treated to a camphor box with a “pop” lid.



Graham Dawes did the demonstration which detailed the planning and presentation, then the outside of the box. Cutting the lid from the blank and the important part of fitting the lid to the base ensuring the “pop” when removing the lid.

Graham demonstrated the use of jam chucks to hold the lid and base while finishing the box.

Thankyou to all who attended and a special thanks to Graham Dawes for his informative demonstration.

Regards

Gregory Sheath



LYNNWOOD HOUSE

14 September

29 Byron Road

Guildford

10am to 3pm

**Come along and show off  
your skill to the world**





## TOOL VERSATILITY AND ADAPTABILITY

As we all know our tools are designed to do specific actions.

However, the three following tools can also be used as scrapers, while this action is not widely promoted, they can do a good job but with consequences, that being they are all sharpened for their particular purpose, consequently, they do not have the body of metal and blunt grind angle under the cutting edge for longevity and become blunt very quickly. Some turners use these tools for a quick very light scrape to finish, being fully aware of the consequences of constant sharpening etc.



**SKEW**



**PARTING TOOL**



**DETAIL GOUGE**

This is only three tools in the basic set and others not listed have the capabilities. Eddie C.



## Members Welfare Report

The welfare of members and their families is important to our club. Please let me know if you or someone you know is unwell, or worse still, no longer with us.

Get Well Cards have been sent to the following Members and/Or Partners

Bob and Lynette Young, Yo Whybrow, Brett Whybrow, Cora De Vos (wife of John De Vos)

We wish everyone a Speedy Recovery.

A Sympathy card was sent this month to

**Nil this month**

Viv Tabone is the Welfare Officer. If you become aware of the need for get well and sympathy cards, please let her know at her email address:

[mrsparky1@bigpond.com](mailto:mrsparky1@bigpond.com)

or

Text her on: **0414 557 776**



# TREND TIMBERS

SPECIALIST IN FINE WOODS

Established 1969 A third generation timber family



## YOUR 1 STOP WOODWORKING SHOP IN NSW

Over 100 species  
Select timbers for  
Cabinetmaking  
Furniture  
Joinery  
Woodturning  
Carving

**TREND TIMBERS**  
15 Railway Road North,  
Mulgrave NSW 2756  
**TELEPHONE: 02 4577 5277**  
**FAX: 02 4577 6846**  
Email: [sales@trendtimbers.com.au](mailto:sales@trendtimbers.com.au)  
[www.trendtimbers.com.au](http://www.trendtimbers.com.au)

Opening Hours  
**ALL WELCOME!!**  
Mon– Fri 8am-4pm  
Sat 8am-11.30am  
Closed  
Public Holidays &  
Long Weekends

# Joke of the Month

A worldwide survey was conducted by the UN. The only question asked was: "Would you please give your honest opinion about solutions to the food shortage in the rest of the world?"

The survey was a huge failure. I

n Africa they didn't know what "food" meant.

In Eastern Europe they didn't know what "honest" meant.

In Western Europe they didn't know what "shortage" meant.

In China they didn't know what "opinion" meant.

In the Middle East they didn't know what "solution" meant.

In South America they didn't know what "please" meant.

And in the USA they didn't know what "the rest of the world" meant.



## A little Inspiration





# HAPPY BIRTHDAY

Member #	Title	First Name	Surname
879	Ms.	Anna	Dawes
3601A	Ms.	Leonie	Singh
3655	Mr.	Malcolm	Harrild
3818	Mr.	Allan	Logan
3885	Mr.	Angelo	Cella-Sartor
4021	Dr.	Silvana	Sarmento-Leite
4088A	Mrs	Coralie	Mahoney
4087	Miss	Kathrine	Honor

## NEW MEMBER/S

A very special welcome to: Sebastian Sammut

## BUNNINGS BBQ

**Seven Hills**

**Saturday 4th October 2025**

**We need at least 6 people there at all times**

**Especially between 10am and 3pm**

**Plus 2 members to pack/unpack and tow the trailer**

**Please put your name on the board**

10 - 19 OCTOBER 2025

# Sydney Craft Week

**SAVE THE DATE**

Join us for  
this year's  
festival

**[sydneycraftweek.com](http://sydneycraftweek.com)**

An Australian Design Centre Initiative

[@australiandesigncentre](https://www.instagram.com/australiandesigncentre)

[#sydneycraftweek](https://www.instagram.com/sydneycraftweek)

[#materialintelligence](https://www.instagram.com/materialintelligence)

[@sydneycraftweek](https://www.instagram.com/sydneycraftweek)

[#sydneycraftweek2025](https://www.instagram.com/sydneycraftweek2025)

[#australiandesigncentre](https://www.instagram.com/australiandesigncentre)

# Sydney Craft Week 10th to 19th October 2025



We have entered this event and WSWT will be hosting demonstrations from 10 am to 12pm every day except Sundays when we are closed.

Come along and enjoy what your club has to offer. Have a cuppa and chat with other members and hopefully we'll attract some new members. Let's make everyone and anyone who comes along experience what we know to be great and feel that this club is a wonderful wood turning place to be.



## Woodturning

Western Sydney Woodturners, Cnr Northcott Rd and Diane Dr, Lalor Park



Western Sydney Woodturners at Lalor Park, caters for everyone in a mixed friendly, supportive and congenial setting, with a very active ladies' group who meet once a month. They provide regular training sessions and demonstrations in the art and craft of woodturning.

Club members handmade all types of wooden objects, art pieces, bowls, boxes, chopping boards and pepper mills, and regularly enter products at local shows. There will be a display of wood turned pieces made by members plus unique handmade wood products for sale.



Open Studio, Demonstrations Friday 10 October to Friday 17 October, except Sunday, 10am to 12pm

Regards  
Gregory Sheath



## Hot Topic From the Internet . . .

(This to encourage discussion. The comments and opinions of others are theirs alone and should not be considered instruction r advice.)

**What do you think? Drop me an email and I will publish member opinions**

### Differences Between a Detail Gouge and a Bowl Gouge

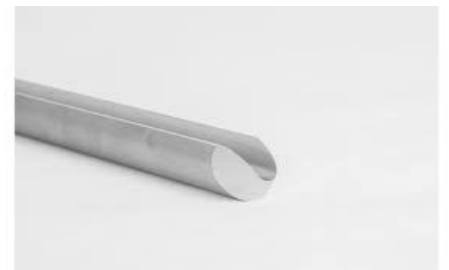
Woodturning requires specialized tools to shape and finish wood efficiently and safely. Among the most commonly used gouges are the **detail gouge** and the **bowl gouge**. While they may appear similar at a glance, they are designed for very different purposes and have distinct characteristics in terms of shape, use, and functionality.

#### 1. Purpose and Application

- **Detail Gouge:** This tool is primarily used for **fine detail work** on spindles and smaller turnings. It excels at creating intricate cuts, beads, coves, and clean transitions in tight spaces. It's often used in spindle turning or when working on projects like pens, finials, and decorative elements.



- **Bowl Gouge:** This is a more robust tool designed specifically for turning the **inside and outside of bowls** and other hollow forms. It is capable of removing large amounts of material while maintaining control, making it ideal for roughing, shaping, and finishing curved surfaces on end grain.



#### 2. Flute Shape and Size

- **Detail Gouge:** Typically has a **shallower flute** (U- or V-shaped), which gives it more rigidity and control in delicate work. The shallow flute reduces tool vibration and offers precision.
- **Bowl Gouge:** Has a **deeper, parabolic or elliptical flute**, allowing it to hold more shavings and cut more aggressively. The deeper flute aids in clearing chips efficiently while working on concave and convex surfaces.

### 3. Tool Size and Steel Mass

- **Detail Gouge:** Usually smaller in diameter and lighter in weight, which suits it for lighter, more precise cutting. It's easier to maneuver for fine work.
- **Bowl Gouge:** Larger and heavier, with more mass to absorb vibration during heavy cuts. This added mass is essential for stability when shaping bowl interiors or roughing out blanks.

### 4. Grind and Tip Shape

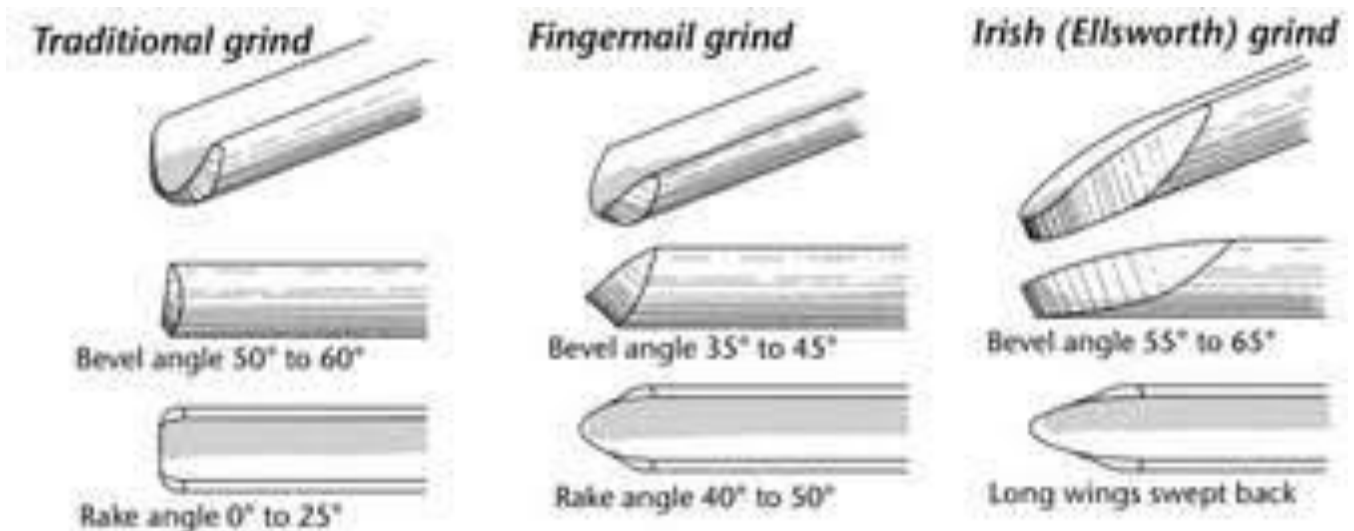
- **Detail Gouge:** Often ground with a **sharper, longer point** (also called a fingernail or acute grind), which helps it reach into tight spots and make sharp, clean cuts.
- **Bowl Gouge:** Typically has a **swept-back grind** (e.g., Irish or fingernail grind), providing versatility in both roughing and finishing cuts. This shape allows for smoother transitions and fewer catches when turning bowls.

### Conclusion

In summary, while both tools are types of gouges used in woodturning, the **detail gouge** is best for precision and intricate work, particularly in spindle turning, whereas the **bowl gouge** is built for power, control, and efficiency when shaping bowls and hollow forms. Choosing the right gouge for the task not only improves the quality of the work but also ensures better control and safety during the turning process.



## Gouge grind types



## SAFETY HINT AND TIP.

Your body is precious. It needs you to look after it.



## THINK AND ACT SAFELY.

**REMEMBER.** Think safety act safety when operating the pedestal drill. Always use clamps, vice, stops etc, **NEVER** use your hand to hold workpiece when machine is operational serious accidents can occur.

Eddie C.

Safety comes in many forms, not only in hearing eyes and dust but also in loose ends, loose clothing and not covered foot ware. We as responsible adults should always be conscious of these and discuss it if we see something that is not right or of some concern. Please be vigilant. Eddie C.

Some examples of unsafe Practices:



Hare and Forbes Marketing material was not available at the time of printing. Should it become available later, an amended copy of the newsletter will be published on the Internet.

# THE BACK PAGE

## Item 64

## MAKING A SPATULA

## SEPTEMBER 2025



Start turning a blank roughly to shape by holding the work piece in the chuck, supported at the other end by a live center. Then remove it and trim the square end on the band saw giving you two flat sides, remount it in the chuck as indicated above, shaping the handle to your design sand to finish.



With the handle now finished take it to the band saw and trim the edges with a slight taper, angle the scraper blade to your choice or even leave straight. Complete overall finishing by sanding on a disc sander and sealing with a food safe oil.

My thanks go to Lawrence Mifsud for all his help with this back page with photos etc.

**Note.** As in all professions there are many and varied opinions and ways of doing things. This is true of wood turning. These articles are the results of my reading article publications

Eddie C